



RIVERSIDE COUNTY OFFICE OF EDUCATION

EDWIN GOMEZ, Ed.D. | County Superintendent of Schools

English Language Proficiency
Assessments for California
(ELPAC)

2025 Riverside County Summative ELPAC and Summative Alternate ELPAC Report

October 2025



2025 Summative English Language Proficiency Assessments for California (ELPAC) Results Riverside County Office of Education

The Riverside County Office of Education (RCOE) focuses on supporting students, schools, and districts in achieving the RCOE pledge: *Every student in Riverside County will graduate from high school academically and socially prepared for college, the workforce, and civic responsibility.*

Table of Contents

- Introduction
- Section 1: Riverside County Office of Education 2025 Summative ELPAC and Summative Alternate ELPAC Overall and Subtest Performance Comparison by Grade Level and Achievement Level
- Section 2: Riverside County Office of Education ELPAC, 2018-2025 Overall and Subtest Performance Comparison Over Time
- Section 3: List of Districts in Riverside County 2025 Summative ELPAC and Summative Alternate ELPAC Overall Comparison
- Section 4: Comparison to 10 Largest Counties 2025 Summative ELPAC and Summative Alternate ELPAC Overall Comparison

Introduction

The English Language Proficiency Assessments for California (ELPAC) is the required state test for English language proficiency (ELP) that must be given to students whose primary language is a language other than English. State and federal law require that local educational agencies administer a state test of ELP to eligible students in kindergarten through grade twelve. The California Department of Education (CDE) transitioned from the California English Language Development Test (CELDT) to the ELPAC as the state ELP assessment in 2018. The ELPAC consists of two separate ELP assessments: one for the initial identification of students as English learners (ELs), and a second for the annual summative assessment to measure a student’s progress in learning English and to identify the student’s level of ELP.

The ELPAC is aligned with the 2012 California English Language Development (ELD) Standards. The table below shows how the four ELPAC levels relate to the three proficiency levels described in the ELD Standards.

ELPAC Levels	Level 1	Level 2	Level 3	Level 4
ELD Standards Proficiency Levels	Emerging—Requires substantial linguistic support.	Expanding—Requires moderate linguistic support.	Bridging—Requires light linguistic support.	

Figure 1: ELPAC Levels Aligned to ELD Standards

The State Board of Education (SBE) has approved the use of ELPAC Overall Performance Level (PL) 4 as the statewide standardized ELP criterion for reclassification. Therefore, LEAs shall use Overall PL 4 to determine whether a student has met the ELP assessment criterion. No additional sub scores or criteria should be added to the Overall PL 4 determination. All other reclassification criteria remain locally determined. Additional information for English learner reclassification can be found at <https://www.cde.ca.gov/sp/ml/reclassification.asp>.

Additional information about ELPAC results can be located at:

- California Department of Education Website: <https://www.cde.ca.gov/ta/tg/ep/>
- ELPAC Website: <https://caaspp-elpac.org/>
- Summative ELPAC Fact Sheet: <https://www.cde.ca.gov/ta/tg/ca/documents/sumelpacfactsheet.pdf>
- [2025-26 ELPAC Information Guide](#)

Alternate ELPAC

The development of the Alternate ELPAC began in 2019, with a statewide operational field test from November 2021 through February 2022. The purpose of the Alternate ELPAC is twofold: the Initial Alternate ELPAC will provide information to determine a student’s initial classification as an English learner (EL) or as initial fluent English proficient (IFEP) and the Summative Alternate ELPAC will provide information on student annual progress toward ELP and support decisions for students to be redesignated fluent English proficient (RFEP).

The Alternate ELPAC is aligned to the [English Language Development Connectors \(DOCX\)](#) and are linked to the 2012 California English Language Development Standards.

The Alternate ELPAC has replaced all locally determined alternate assessments and provides a consistent, standardized measurement of ELP across the state for students with the most significant cognitive disabilities.

The SBE has approved the use of Alternate ELPAC Overall Performance Level (PL) 3 as the statewide standardized ELP criterion for reclassification for students with significant cognitive disabilities that take the Alternate ELPAC. Therefore, LEAs shall use Overall PL 3 to determine whether a student has met the ELP assessment criterion. All other reclassification criteria remain locally determined. Additional information for English learner reclassification can be found at <https://www.cde.ca.gov/sp/ml/reclassification.asp>.

Additional information about the Alternate ELPAC:

- Alternate ELPAC Website: <https://www.cde.ca.gov/ta/tg/ep/alternateelpac.asp>
- Alternate ELPAC Administration Resources: <https://www.caaspp-elpac.org/assessments/elpac/summative-alternate>
- ELPAC Sample Score Reports: <https://www.caaspp-elpac.org/resources/reporting/ssr-and-reporting-resources/sample-student-score-reports>

Section 1

Riverside County Office of Education 2025 Summative ELPAC and Summative Alternate ELPAC Overall and Subtest Performance Comparison by Grade Level and Achievement Level

Summative ELPAC Reporting Level Descriptors

Level	Description
4	<p>Students at this level have well developed English skills.</p> <ul style="list-style-type: none"> ▪ They can usually use English to learn new things in school and to interact in social situations. ▪ They may occasionally need help using English.
3	<p>Students at this level have moderately developed English skills.</p> <ul style="list-style-type: none"> ▪ They can sometimes use English to learn new things in school and to interact in social situations. ▪ They may need help using English to communicate on less-familiar school topics and in less-familiar social situations.
2	<p>Students at this level have somewhat developed English skills.</p> <ul style="list-style-type: none"> ▪ They usually need help using English to learn new things at school and to interact in social situations. ▪ They can often use English for simple communication.
1	<p>Students at this level are at a beginning stage of developing English skills.</p> <ul style="list-style-type: none"> ▪ They usually need substantial help using English to learn new things at school and to interact in social situations. ▪ They may know some English words and phrases.

Results in this report are displayed based on overall student scores on the ELPAC Summative Assessment. In addition, results are displayed based on ELPAC subtests: Oral Language and Written Language. The oral language subtests are inclusive of listening and speaking portions of the ELPAC assessment while the written language includes both reading and writing.

Summative Alternate ELPAC Reporting Level Descriptors

Level	Description
3	<p>Fluent English Proficient—LEVEL 3 (660–699)</p> <ul style="list-style-type: none"> ▪ Students at this level have sufficient English skills to communicate and learn in school. ▪ They may need occasional help with English in order to learn grade-level information that has been modified for students with the most significant cognitive disabilities.
2	<p>Intermediate English Learner—LEVEL 2 (644–659)</p> <ul style="list-style-type: none"> ▪ Students at this level can sometimes use English to communicate and learn in school. ▪ They may need frequent help with English in order to learn grade-level information that has been modified for students with the most significant cognitive disabilities.
1	<p>Novice English Learner—LEVEL 1 (601–643)</p> <ul style="list-style-type: none"> ▪ Students at this level are beginning to develop the English skills they need to communicate and learn in school. ▪ They may need substantial help with English in order to learn grade-level information that has been modified for students with the most significant cognitive disabilities.

Subtest scores are not provided for the Summative Alternate ELPAC.

2024–25 Summative ELPAC Scores

Riverside County Office of Education Overall and Subtest Performance Comparison

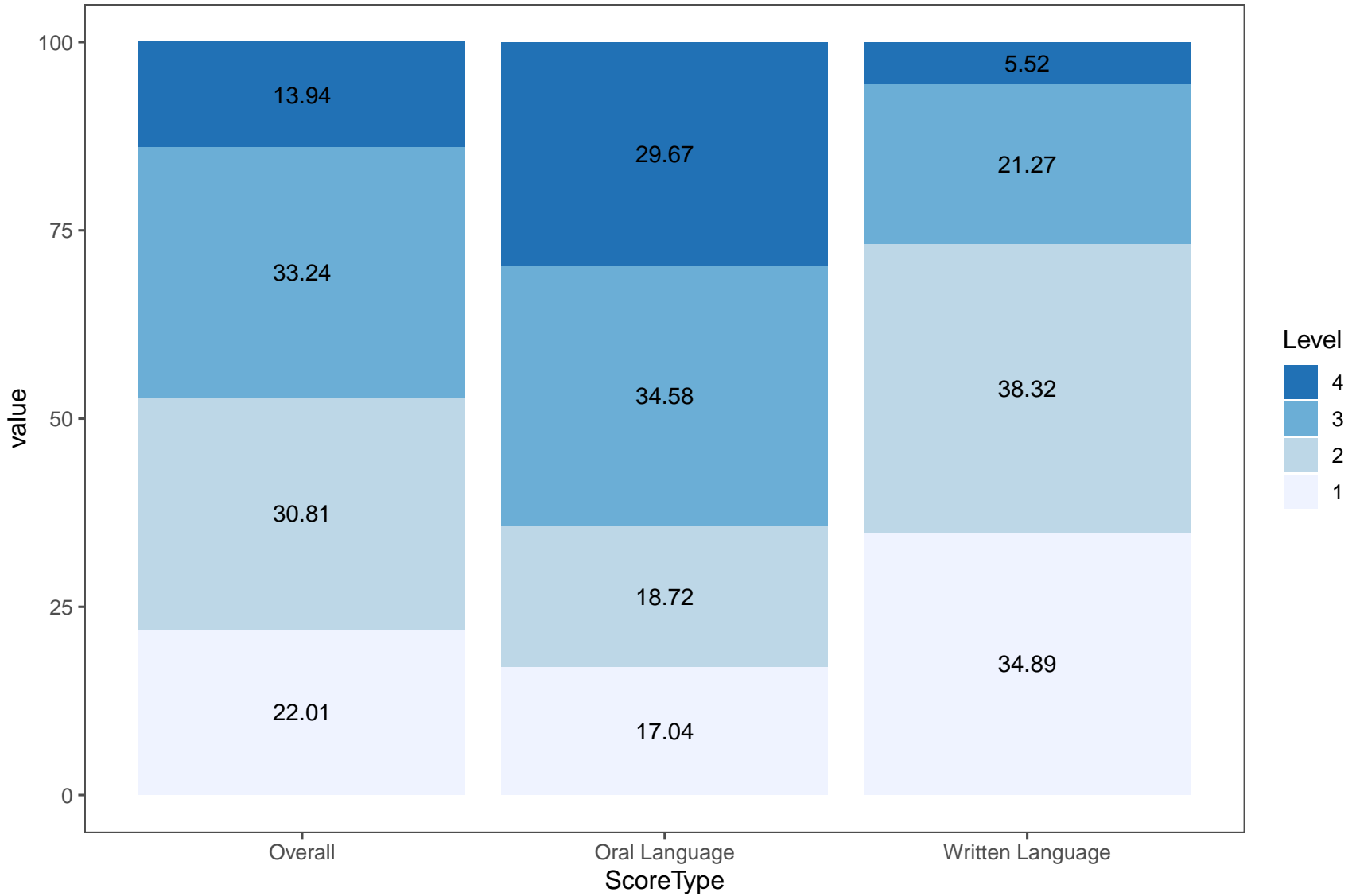


Table 3: Riverside County Office of Education Overall and Subtest Performance Comparison

Score Type	Tested	% Level 1	% Level 2	% Level 3	% Level 4
Overall	63398	22.01	30.81	33.24	13.94
Oral Language	63398	17.04	18.72	34.58	29.67
Written Language	63398	34.89	38.32	21.27	5.52

2024–25 Summative ELPAC Overall Scores

Riverside County Office of Education Grade Level Performance Comparison

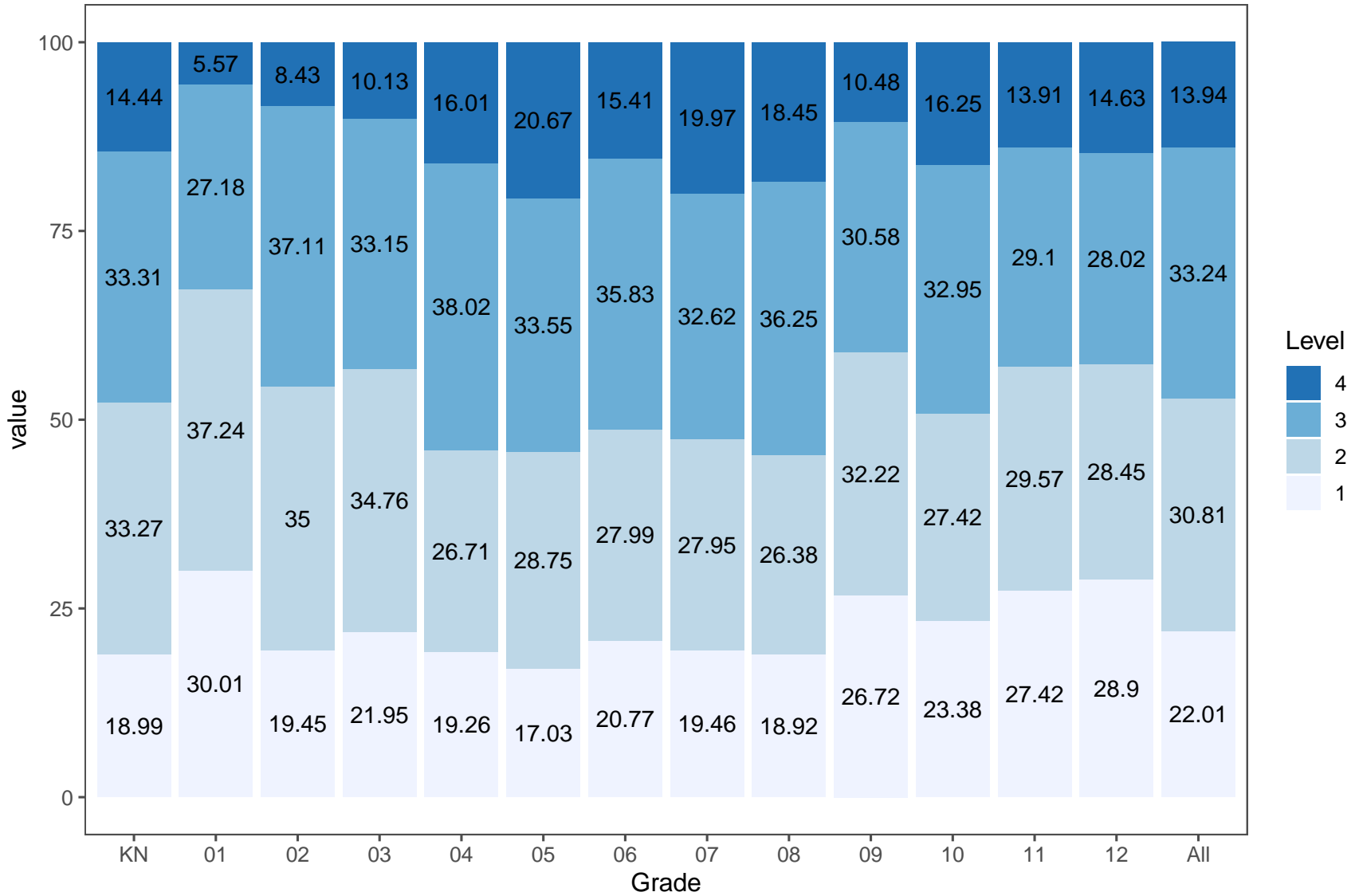


Table 4: ELPAC Overall Scores - Riverside County Office of Education Grade Level Performance Comparison

Grade	Tested	% Level 1	% Level 2	% Level 3	% Level 4
KN	5957	18.99	33.27	33.31	14.44
01	5728	30.01	37.24	27.18	5.57
02	6082	19.45	35.00	37.11	8.43
03	6150	21.95	34.76	33.15	10.13
04	6107	19.26	26.71	38.02	16.01
05	5613	17.03	28.75	33.55	20.67
06	4901	20.77	27.99	35.83	15.41
07	4666	19.46	27.95	32.62	19.97
08	4102	18.92	26.38	36.25	18.45
09	3656	26.72	32.22	30.58	10.48
10	3687	23.38	27.42	32.95	16.25
11	3680	27.42	29.57	29.10	13.91
12	3069	28.90	28.45	28.02	14.63
All	63398	22.01	30.81	33.24	13.94

2024–25 Summative ELPAC Oral Language Scores

Riverside County Office of Education Grade Level Performance Comparison

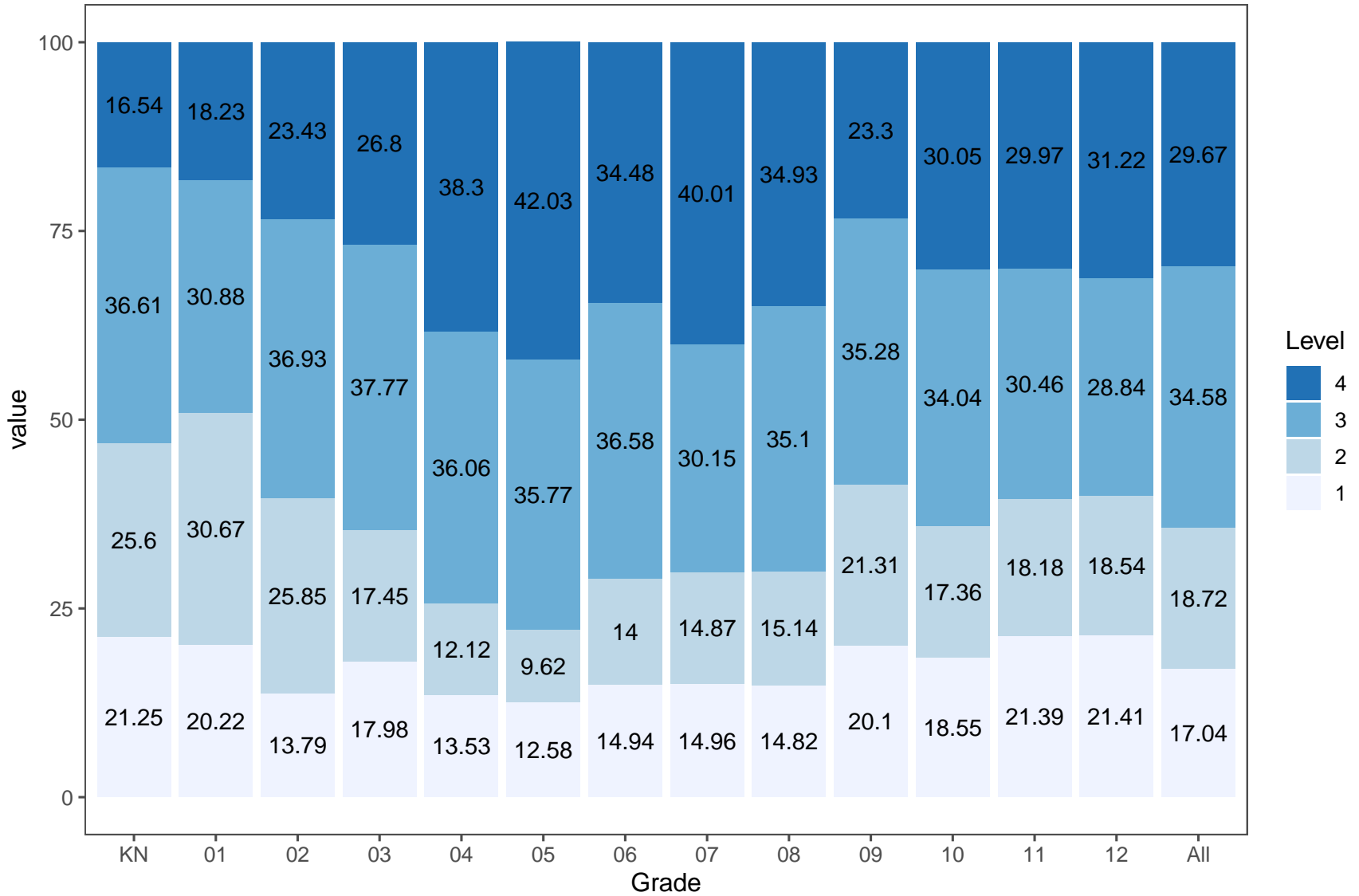


Table 5: ELPAC Oral Language Scores - Riverside County Office of Education Grade Level Performance Comparison

Grade	Tested	% Level 1	% Level 2	% Level 3	% Level 4
KN	5957	21.25	25.60	36.61	16.54
01	5728	20.22	30.67	30.88	18.23
02	6082	13.79	25.85	36.93	23.43
03	6150	17.98	17.45	37.77	26.80
04	6107	13.53	12.12	36.06	38.30
05	5613	12.58	9.62	35.77	42.03
06	4901	14.94	14.00	36.58	34.48
07	4666	14.96	14.87	30.15	40.01
08	4102	14.82	15.14	35.10	34.93
09	3656	20.10	21.31	35.28	23.30
10	3687	18.55	17.36	34.04	30.05
11	3680	21.39	18.18	30.46	29.97
12	3069	21.41	18.54	28.84	31.22
All	63398	17.04	18.72	34.58	29.67

2024–25 Summative ELPAC Written Language Scores

Riverside County Office of Education Grade Level Performance Comparison

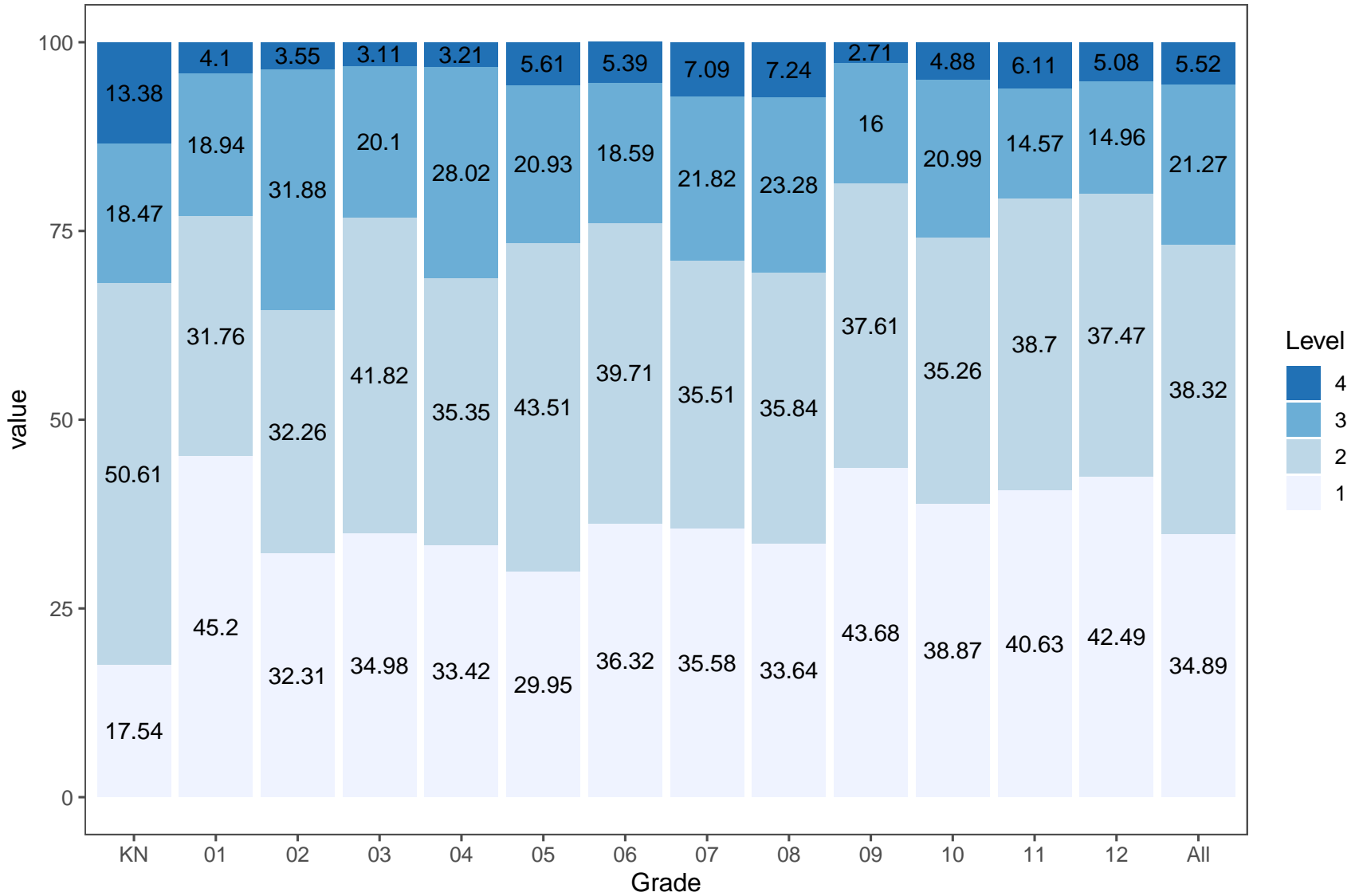


Table 6: ELPAC Written Language Scores - Riverside County Office of Education Grade Level Performance Comparison

Grade	Tested	% Level 1	% Level 2	% Level 3	% Level 4
KN	5957	17.54	50.61	18.47	13.38
01	5728	45.20	31.76	18.94	4.10
02	6082	32.31	32.26	31.88	3.55
03	6150	34.98	41.82	20.10	3.11
04	6107	33.42	35.35	28.02	3.21
05	5613	29.95	43.51	20.93	5.61
06	4901	36.32	39.71	18.59	5.39
07	4666	35.58	35.51	21.82	7.09
08	4102	33.64	35.84	23.28	7.24
09	3656	43.68	37.61	16.00	2.71
10	3687	38.87	35.26	20.99	4.88
11	3680	40.63	38.70	14.57	6.11
12	3069	42.49	37.47	14.96	5.08
All	63398	34.89	38.32	21.27	5.52

2024–25 Summative Alternate ELPAC Overall Scores

Riverside County Office of Education Grade Level Performance Comparison

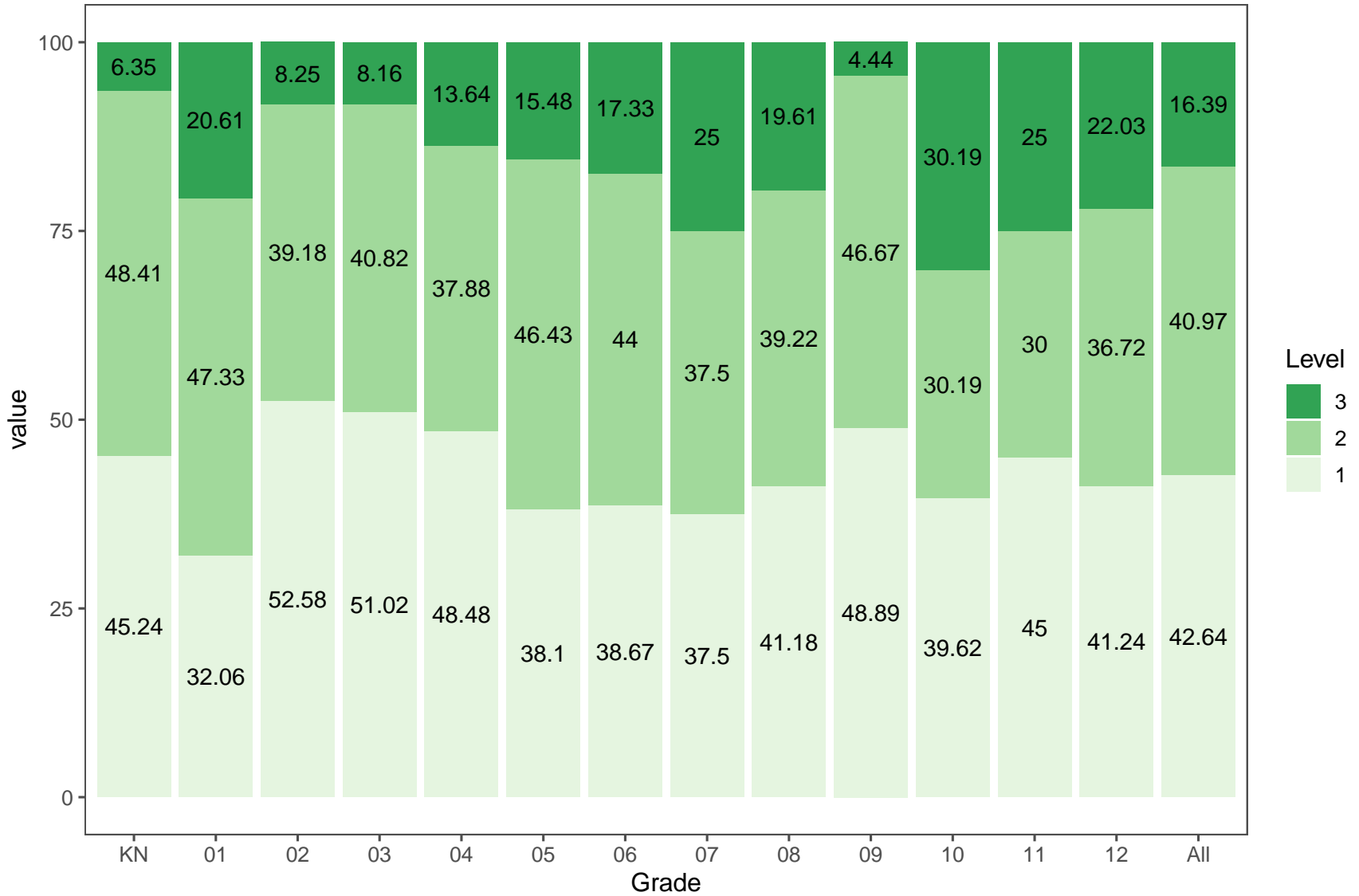


Table 7: 2024-25 Summative Alternate ELPAC Overall Scores - Riverside County Office of Education Grade Level Performance Comparison

Grade	Tested	% Level 1	% Level 2	% Level 3
KN	126	45.24	48.41	6.35
01	131	32.06	47.33	20.61
02	97	52.58	39.18	8.25
03	98	51.02	40.82	8.16
04	66	48.48	37.88	13.64
05	84	38.10	46.43	15.48
06	75	38.67	44.00	17.33
07	72	37.50	37.50	25.00
08	51	41.18	39.22	19.61
09	45	48.89	46.67	4.44
10	53	39.62	30.19	30.19
11	60	45.00	30.00	25.00
12	177	41.24	36.72	22.03
All	1135	42.64	40.97	16.39

Section 2

Riverside County Office of Education Summative ELPAC, 2018-2025 Overall and Subtest Performance Comparison Over Time

Overall and Subtest performance levels are provided for the Summative ELPAC for the years 2018 through 2025. Testing was suspended in 2020 due to the COVID-19 pandemic resulting in school closures in spring 2020.

2019–25 Summative ELPAC Scores

Riverside County Office of Education Overall and Subtest Performance Comparison Over Time

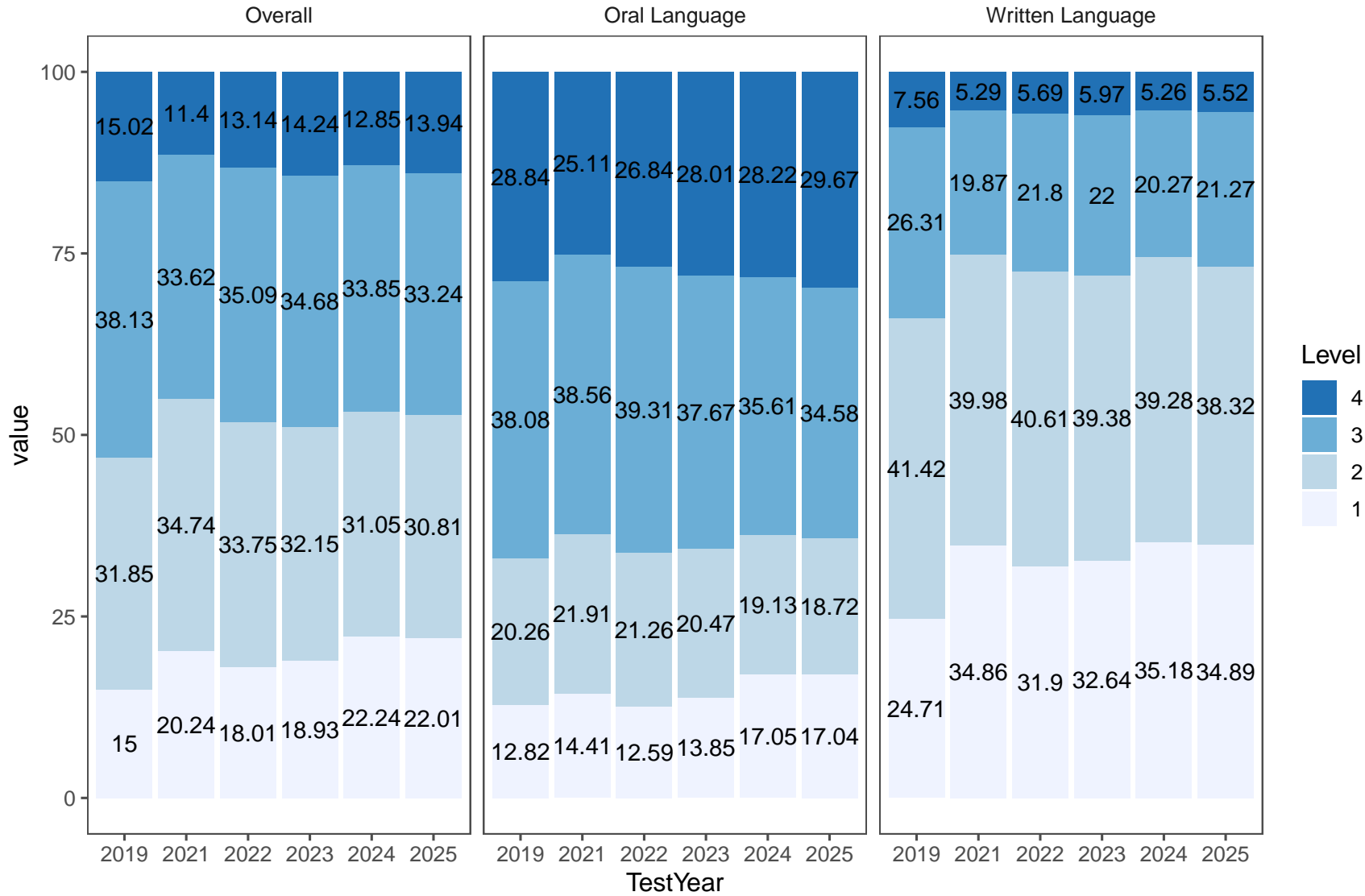


Table 8: 2019-25 Summative ELPAC Scores - Riverside County Office of Education Overall and Subtest Performance Comparison Over Time

ScoreType	TestYear	Tested	% Level 1	% Level 2	% Level 3	% Level 4
Overall	2019	69697	15.00	31.85	38.13	15.02
Overall	2021	67290	20.24	34.74	33.62	11.40
Overall	2022	71097	18.01	33.75	35.09	13.14
Overall	2023	70289	18.93	32.15	34.68	14.24
Overall	2024	68381	22.24	31.05	33.85	12.85
Overall	2025	63398	22.01	30.81	33.24	13.94
Oral Language	2019	69697	12.82	20.26	38.08	28.84
Oral Language	2021	67290	14.41	21.91	38.56	25.11
Oral Language	2022	71097	12.59	21.26	39.31	26.84
Oral Language	2023	70289	13.85	20.47	37.67	28.01
Oral Language	2024	68381	17.05	19.13	35.61	28.22
Oral Language	2025	63398	17.04	18.72	34.58	29.67
Written Language	2019	69697	24.71	41.42	26.31	7.56
Written Language	2021	67290	34.86	39.98	19.87	5.29
Written Language	2022	71097	31.90	40.61	21.80	5.69
Written Language	2023	70289	32.64	39.38	22.00	5.97
Written Language	2024	68381	35.18	39.28	20.27	5.26
Written Language	2025	63398	34.89	38.32	21.27	5.52

Section 3

List of Districts in Riverside County 2025 Summative ELPAC and Summative Alternate ELPAC Overall Comparison

There is great variance in the size and demographics of the school districts within Riverside County. The largest district, Corona-Norco Unified School district served almost 50,000 students in the 2024-25 school year. The smallest district, Desert Center Unified, had an enrollment of 29 students in the 2024-25 school year (Source: [CDE Dataquest](#)).

Reviewing assessment results for schools and districts within Riverside County allows districts to determine how they perform in comparison to other districts on Summative ELPAC and Summative Alternate ELPAC statewide assessments. This report also permits school and district leaders to determine how their district is faring in comparison to similar districts if demographics are taken into consideration.

2024–25 Summative ELPAC Overall Scores

Districts in Riverside County

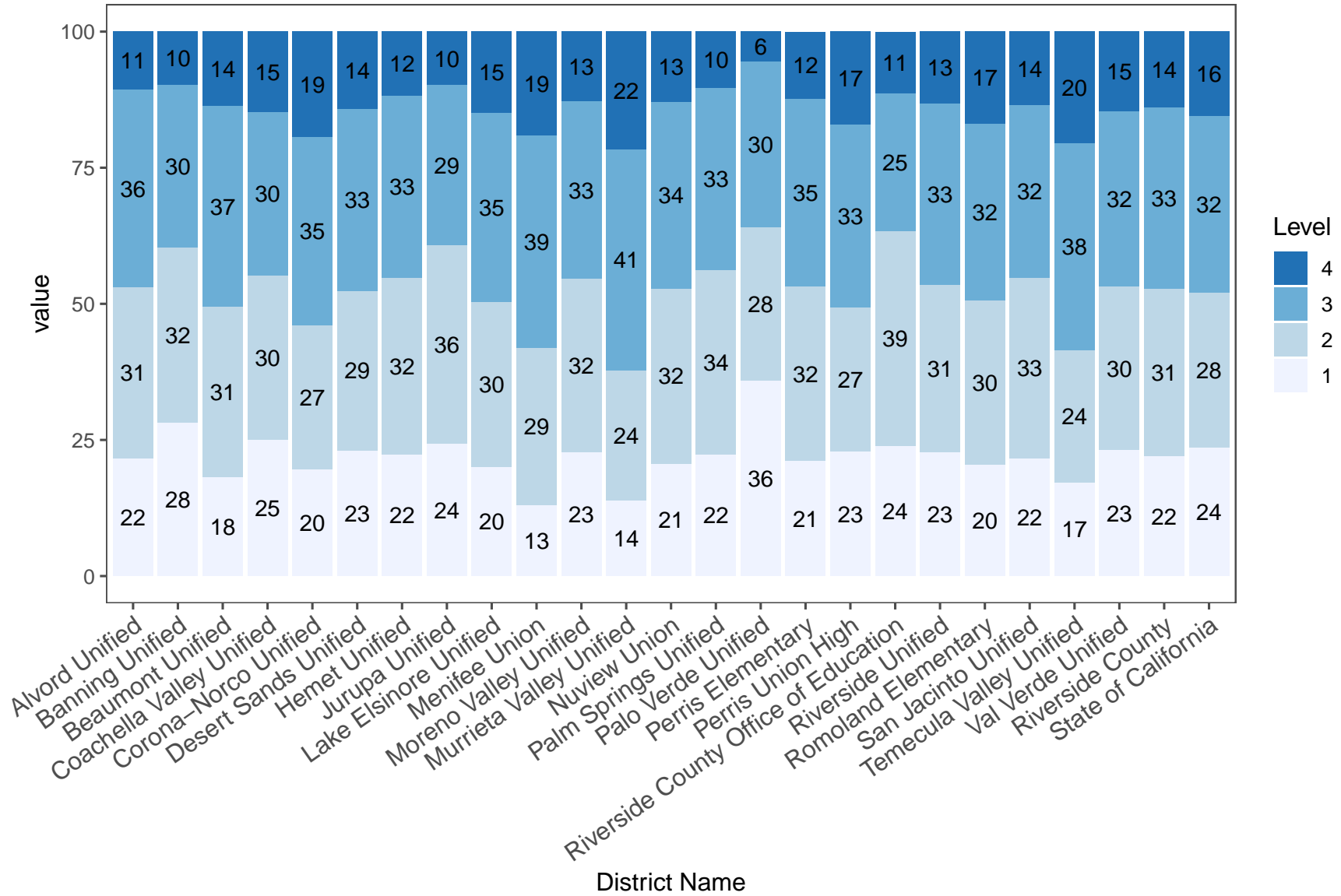


Table 9: ELPAC Overall Scores - Districts in Riverside County

District Name	Tested	% Level 1	% Level 2	% Level 3	% Level 4
Alvord Unified	3687	21.59	31.46	36.29	10.66
Banning Unified	750	28.13	32.27	29.87	9.73
Beaumont Unified	835	18.20	31.26	36.89	13.65
Coachella Valley Unified	6227	25.02	30.18	30.03	14.77
Corona-Norco Unified	6124	19.56	26.55	34.52	19.37
Desert Sands Unified	4483	23.11	29.33	33.37	14.19
Hemet Unified	2937	22.37	32.48	33.37	11.78
Jurupa Unified	4661	24.31	36.45	29.41	9.83
Lake Elsinore Unified	2345	20.09	30.36	34.63	14.93
Menifee Union	894	13.09	28.75	39.15	19.02
Moreno Valley Unified	5159	22.78	31.81	32.58	12.83
Murrieta Valley Unified	1023	13.88	23.95	40.57	21.60
Nuview Union	503	20.68	32.21	34.19	12.92
Palm Springs Unified	4980	22.35	33.88	33.47	10.30
Palo Verde Unified	181	35.91	28.18	30.39	5.52
Perris Elementary	2118	21.15	32.01	34.56	12.28
Perris Union High	1484	22.84	26.55	33.49	17.12
Riverside County Office of Education	213	23.94	39.44	25.35	11.27
Riverside Unified	5764	22.69	30.85	33.22	13.24
Romoland Elementary	674	20.47	30.27	32.34	16.91
San Jacinto Unified	1538	21.59	33.22	31.66	13.52
Temecula Valley Unified	1241	17.24	24.25	38.03	20.47
Val Verde Unified	3684	23.15	30.05	32.17	14.63
Riverside County	63398	22.01	30.81	33.24	13.94
State of California	947393	23.65	28.42	32.40	15.53

2024–25 Summative Alternate ELPAC Overall Scores

Districts in Riverside County

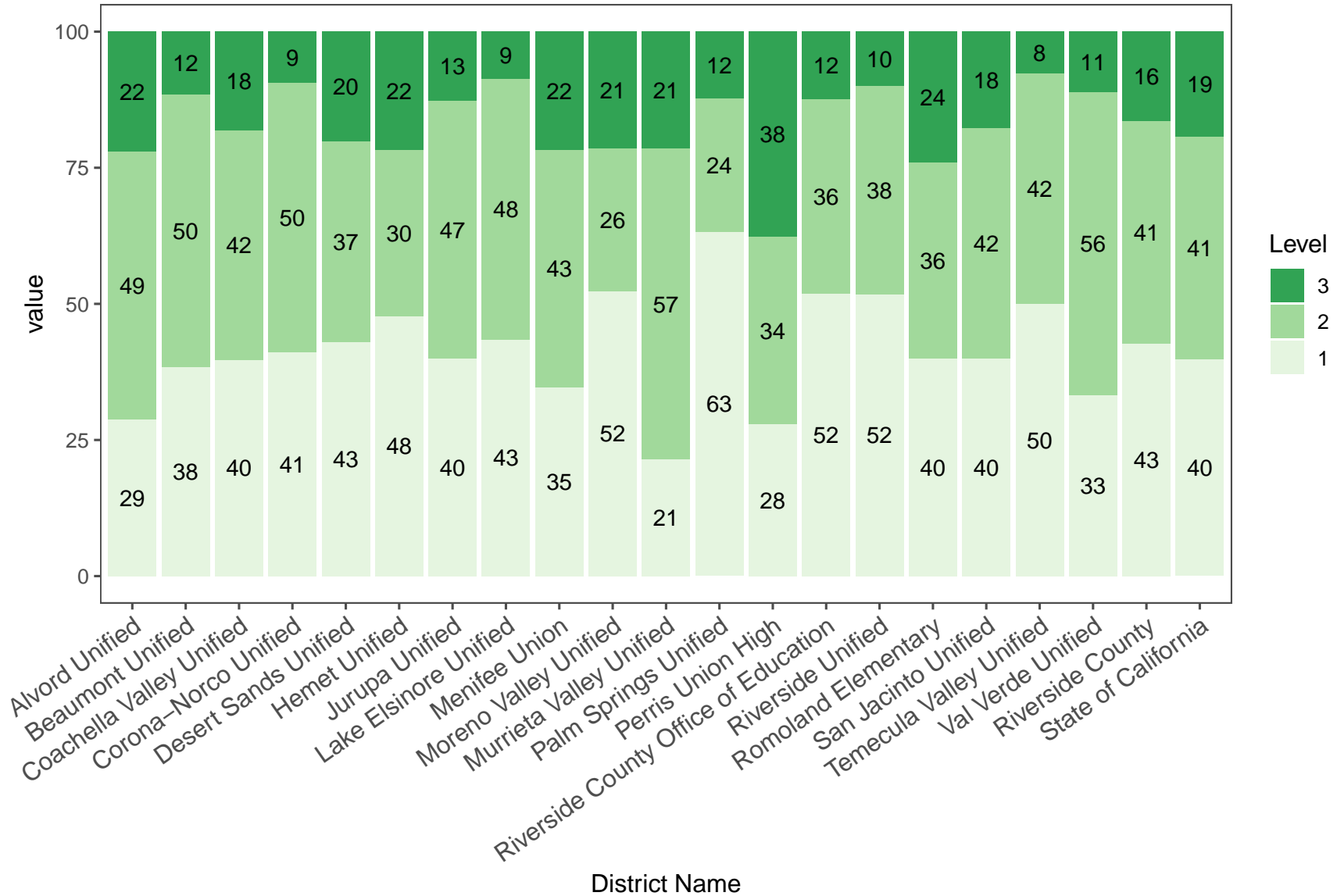


Table 10: Summative Alternate ELPAC Overall Scores - Districts in Riverside County

District Name	Tested	% Level 1	% Level 2	% Level 3
Alvord Unified	59	28.81	49.15	22.03
Beaumont Unified	26	38.46	50.00	11.54
Coachella Valley Unified	88	39.77	42.05	18.18
Corona-Norco Unified	107	41.12	49.53	9.35
Desert Sands Unified	114	42.98	36.84	20.18
Hemet Unified	46	47.83	30.43	21.74
Jurupa Unified	55	40.00	47.27	12.73
Lake Elsinore Unified	23	43.48	47.83	8.70
Menifee Union	23	34.78	43.48	21.74
Moreno Valley Unified	42	52.38	26.19	21.43
Murrieta Valley Unified	28	21.43	57.14	21.43
Palm Springs Unified	49	63.27	24.49	12.24
Perris Union High	61	27.87	34.43	37.70
Riverside County Office of Education	129	51.94	35.66	12.40
Riverside Unified	110	51.82	38.18	10.00
Romoland Elementary	25	40.00	36.00	24.00
San Jacinto Unified	45	40.00	42.22	17.78
Temecula Valley Unified	26	50.00	42.31	7.69
Val Verde Unified	63	33.33	55.56	11.11
Riverside County	1135	42.64	40.97	16.39
State of California	15910	39.88	40.78	19.34

Section 4

Comparison to 10 Largest Counties 2025 Summative ELPAC and Summative Alternate ELPAC Overall Comparison

Riverside County is one of the largest counties in the state of California. In an effort to determine how Riverside County is performing on statewide standardized assessments as compared to other large counties in CA, this report includes Summative ELPAC and Summative Alternate ELPAC assessment results for ten comparison counties in CA. Counties include Alameda, Fresno, Kern, Los Angeles, Orange, Sacramento, San Bernardino, San Diego, and Santa Clara.

2024–25 Summative ELPAC Overall Scores

Top Ten Largest Counties in State of California

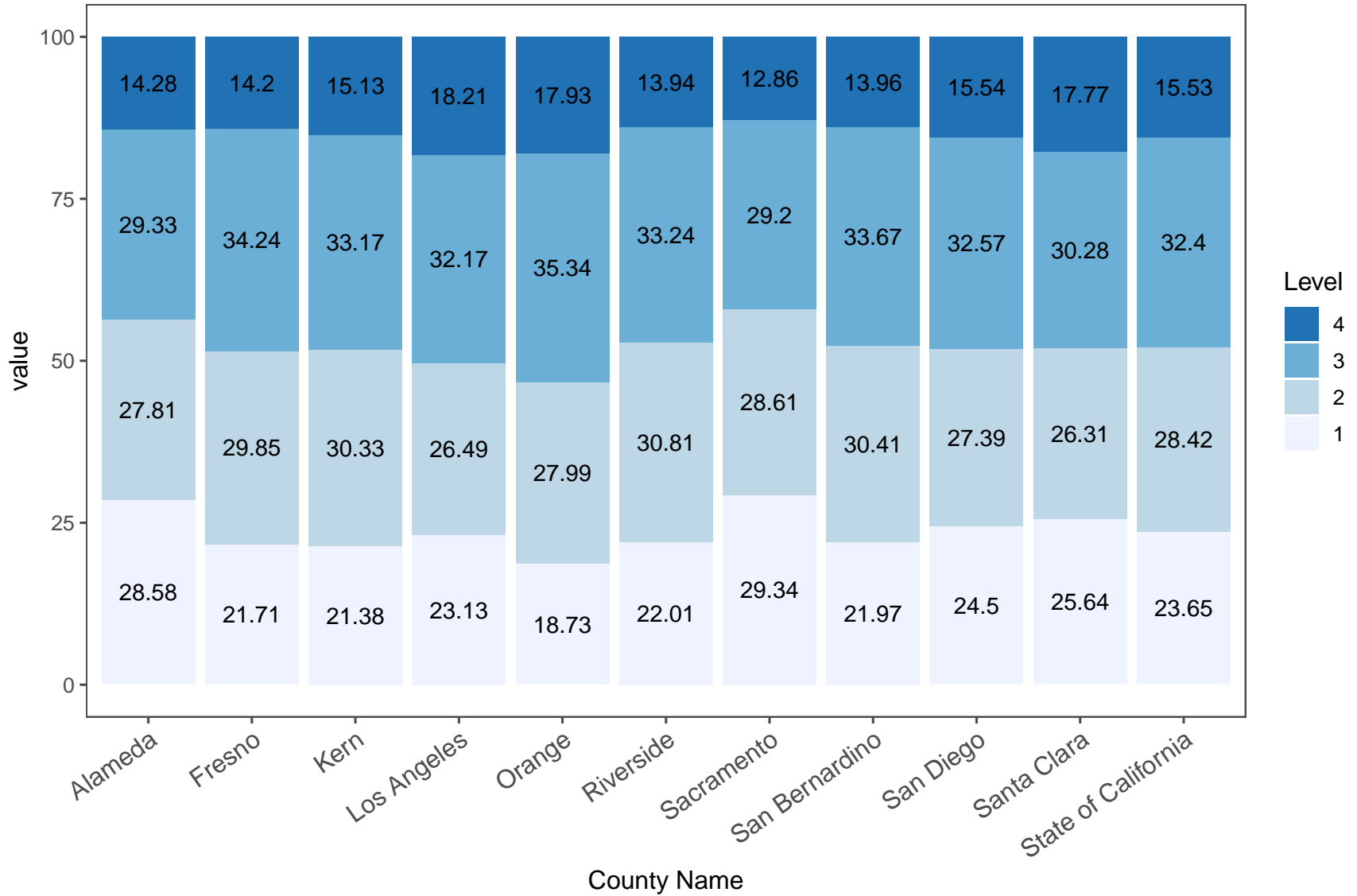


Table 11: ELPAC Overall Scores - Districts in Riverside County

County Name	Tested	% Level 1	% Level 2	% Level 3	% Level 4
Alameda	38068	28.58	27.81	29.33	14.28
Fresno	32919	21.71	29.85	34.24	14.20
Kern	31395	21.38	30.33	33.17	15.13
Los Angeles	195738	23.13	26.49	32.17	18.21
Orange	71037	18.73	27.99	35.34	17.93
Riverside	63398	22.01	30.81	33.24	13.94
Sacramento	45700	29.34	28.61	29.20	12.86
San Bernardino	54234	21.97	30.41	33.67	13.96
San Diego	74829	24.50	27.39	32.57	15.54
Santa Clara	46091	25.64	26.31	30.28	17.77
State of California	947393	23.65	28.42	32.40	15.53

2024–25 Summative Alternate ELPAC Overall Scores

Top Ten Largest Counties in State of California

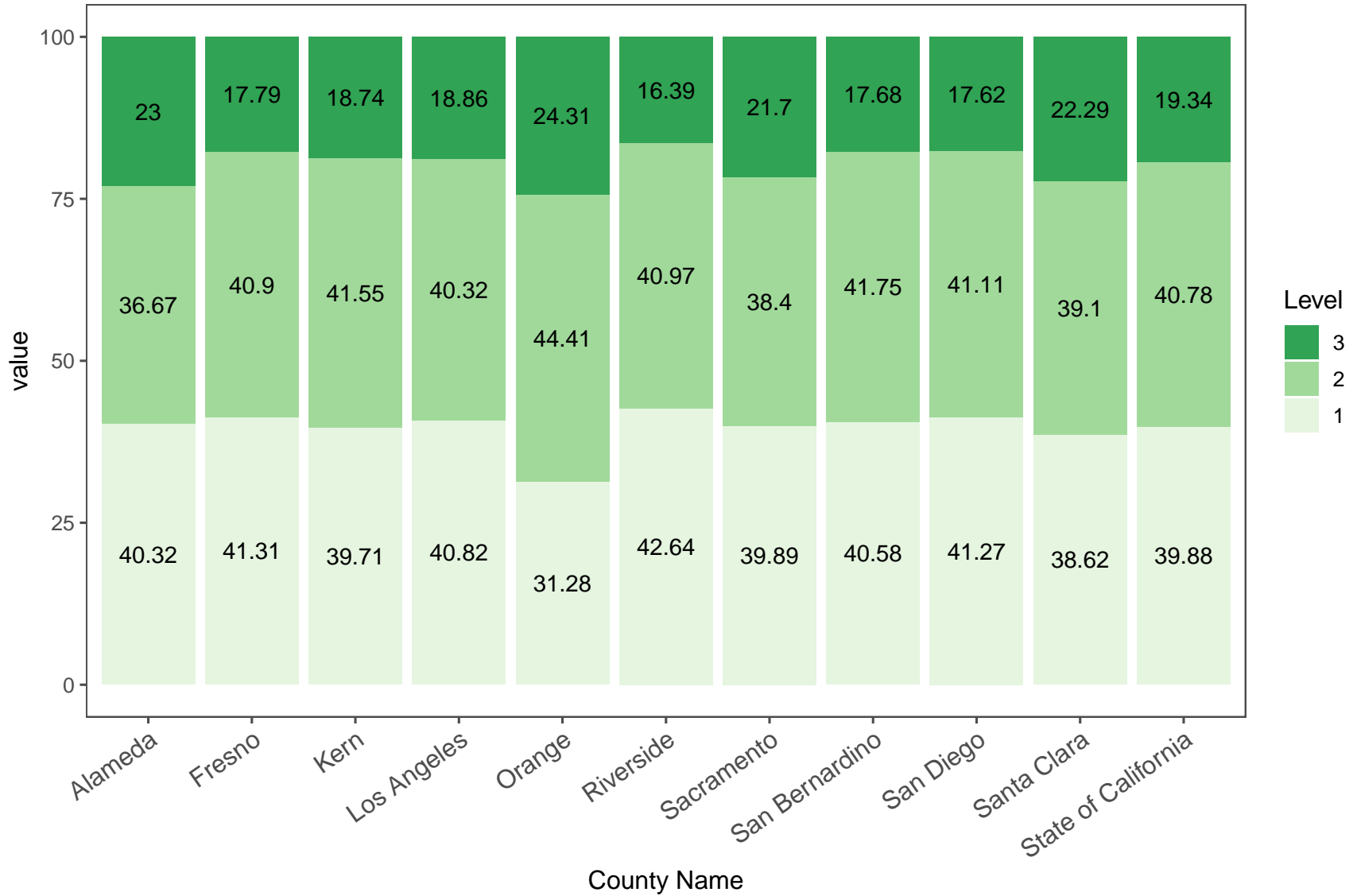


Table 12: Summative Alternate ELPAC Overall Scores - Top Ten Largest Counties in State of California

County Name	Tested	% Level 1	% Level 2	% Level 3
Alameda	739	40.32	36.67	23.00
Fresno	489	41.31	40.90	17.79
Kern	491	39.71	41.55	18.74
Los Angeles	3393	40.82	40.32	18.86
Orange	1378	31.28	44.41	24.31
Riverside	1135	42.64	40.97	16.39
Sacramento	940	39.89	38.40	21.70
San Bernardino	939	40.58	41.75	17.68
San Diego	1277	41.27	41.11	17.62
Santa Clara	1041	38.62	39.10	22.29
State of California	15910	39.88	40.78	19.34