



Riverside County

2024-2025

Four-Year Cohort Graduation, Cohort Dropout,
A-G Completion, and State Seal of Biliteracy Report

February 2026

2024-2025 Riverside County Four-Year Cohort Graduation, Cohort Dropout, A-G Completion, and State Seal of Biliteracy Rates

Graduation and dropout rates for counties, districts, and schools across California are calculated based on four-year cohort information using the California Longitudinal Pupil Achievement Data System (CALPADS). This is the sixteenth time that four-year cohort information has been collected since 2009-2010. To display 16 years of historical data, this report includes students from all schools, charter and non-charter schools, in California.

The four-year cohort is based on the number of students who enter grade 9 for the first time adjusted by adding into the cohort any student who transfers in later during grade 9 or during the next three years and subtracting any student from the cohort who transfers out, emigrates to another country, transfers to a prison or juvenile facility, or dies during that same period. The four-year Adjusted Cohort Graduation Rate (ACGR) is the number of students who graduate from high school in four years with a regular high school diploma divided by the number of students who form the adjusted cohort for the graduating class. Cohort dropout rate reflects the percent of four-year cohort students who: (1) do not graduate with a regular high school diploma, (2) do not otherwise complete high school, or (3) are not still enrolled as a “fifth-year senior”.

In 2016-2017, the California Department of Education (CDE) made several changes to the business rules and methodology for calculating the four-year ACGR pursuant to new federal guidance and audit recommendations from the U.S. Department of Inspector General. Two of the most significant changes are: (1) no longer allowing students transferring to adult education or community college to be removed from the cohort; and (2) no longer counting students exiting with an adult education high school diploma as regular high school graduates. The impact on county, district, and school graduation and dropout rates varies depending on how often students were exited as transferring to an adult education program during the cohort period, or how many students completed with an adult education high school diploma. Students who pass the California High School Proficiency Exam are no longer considered regular high school graduates.

The CDE has released A-G completion and State Seal of Biliteracy information for four-year cohort graduates since 2016-2017. In this report, A-G completion rate reflects the percent of four-year cohort graduates who have successfully completed the minimum course requirements for entry into the University of California (UC) or California State University (CSU) systems. State Seal of Biliteracy rate reflects the percent of four-year cohort graduates who attained a high level of proficiency in one or more languages (including American Sign Language), in addition to English, and earned the State Seal of Biliteracy. Both A-G completion and State Seal of Biliteracy are included in the California School Dashboard and used as College and Career Indicator (CCI) measures.

Executive Summary

1. County Cohort Graduation and Dropout Rates (All Schools): Pages 1-14

- In Riverside County, 93.2 percent (31,730 out of 34,044) of students who started high school in 2021 graduated with their class in 2025. This reflects an increase from 92.4 percent in 2024. The 2025 Riverside County graduation rate was the **highest** among the ten largest counties in California. Since 2010, the county graduation rate has increased from 77.7 percent to 93.2 percent (see pages 1-3).
- The number of 2025 dropouts in Riverside County totaled 1,327 students. The dropout rate decreased from 4.7 percent in 2024 to 3.9 percent in 2025. The 2025 Riverside County dropout rate is the **lowest** among the 10 largest counties in California. Since 2010, the county dropout rate has declined from 15.1 percent to 3.9 percent (see pages 4-6).
- Graduation rates have improved for all student groups since 2010. In 2025, graduation rates remain highest for Asian students (94.8%), White students (94.0%), and female students (95.0%). Lower rates persist for foster youth (75.8%), students with disabilities (82.8%), English learners (86.1%), and homeless youth (84.9%). A gender gap continues, with female students graduating at 95.0 percent compared to 91.5 percent for male students (see pages 7-10)
- Dropout rates in 2025 were highest among foster youth (16.8%), homeless youth (10.2%), English learners (8.7%), and students with disabilities (5.6%). Male students had a higher dropout rate (4.9%) than female students (2.9%) (see pages 11-14).

2. District Cohort Graduation and Dropout Rates (All Schools): Pages 15-18

- 16 out of 18 districts (89%) in Riverside County have a higher 2025 graduation rate than the state average (87.5%). The five districts with the highest 2025 graduation rates are Murrieta Valley Unified (97.8%), Corona-Norco Unified (95.9%), Temecula Valley Unified (95.7%), Riverside Unified (95.6%), and Val Verde Unified (95.1%).
- 16 out of 18 districts (89%) have a lower 2025 dropout rate than the state average (8.0%). The five districts with the lowest 2025 dropout rates are Murrieta Valley Unified (0.5%), Temecula Valley Unified (1.3%), Corona-Norco Unified (1.6%), Beaumont Unified (1.8%), and Lake Elsinore Unified (1.9%).

3. County A-G Completion and State Seal of Biliteracy Rates (All Schools): Pages 19-24

- In 2025, 53.7 percent of Riverside County four-year cohort graduates met A-G requirements for admission to UC and/or CSU, ranking 6th among the 10 largest counties in California. This represents an increase from 49.7 percent in 2024.
- The 2025 State Seal of Biliteracy rate was 13.7 percent, ranking 8th among the 10 largest counties in California, and reflecting continued improvement over prior years.
- Significant differences persist among student groups in A-G completion rates. Asian students (79.6%) and White students (61.9%) outperformed the county average, while students with disabilities (20.4%), foster youth (24.1%), English learners

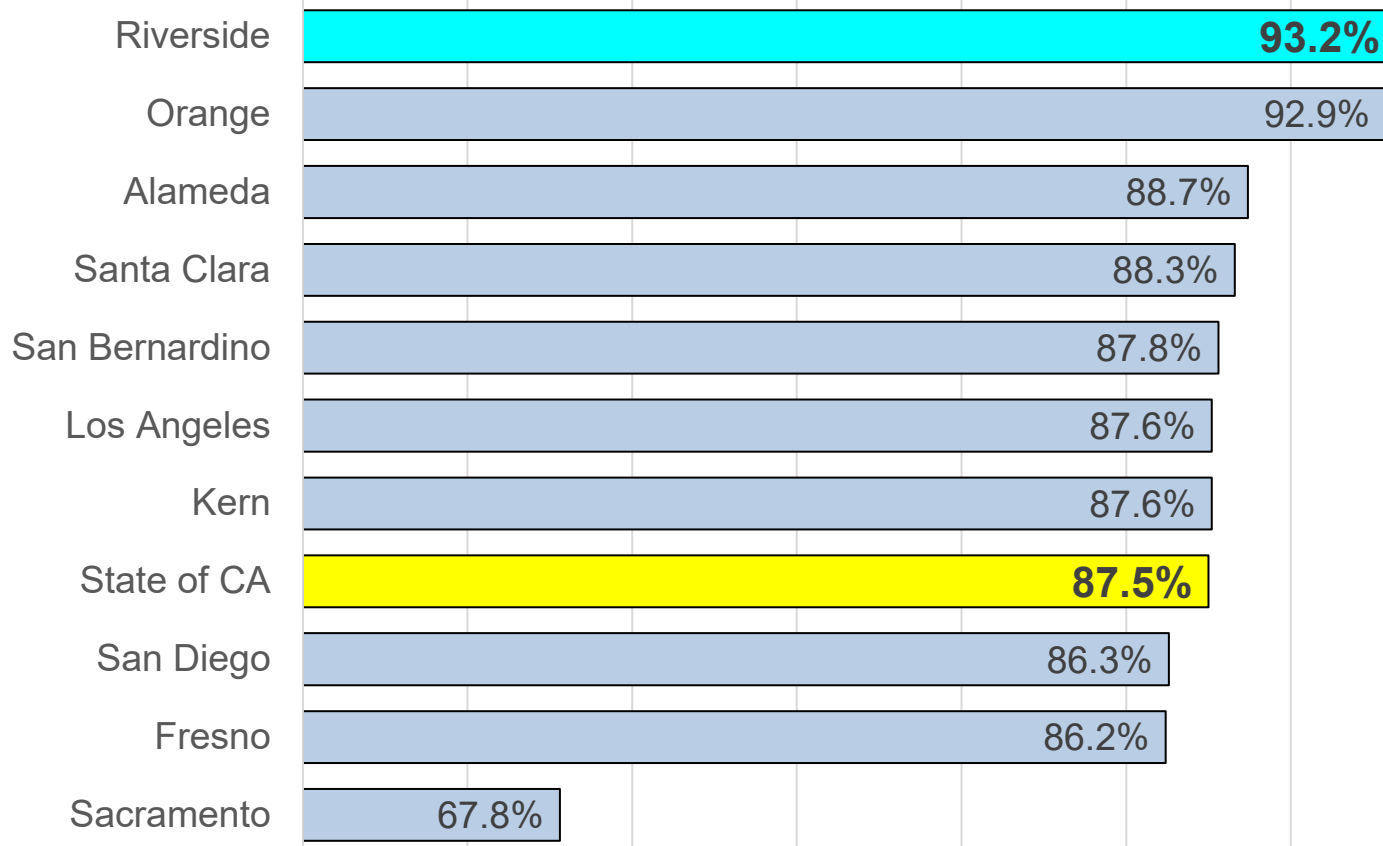
(28.8%), and homeless youth (32.4%) remained substantially below the county rate. Female students (61.0%) outperformed male students (46.6%).

- State Seal of Biliteracy attainment was highest among migrant education students (34.0%), Asian students (16.9%), and Hispanic or Latino students (16.5%). Rates were lowest for students with disabilities (2.5%), African American (2.5%), and foster youth (3.8%). Female students (18.1%) earned the State Seal of Biliteracy at nearly twice the rate of male students (9.3%).

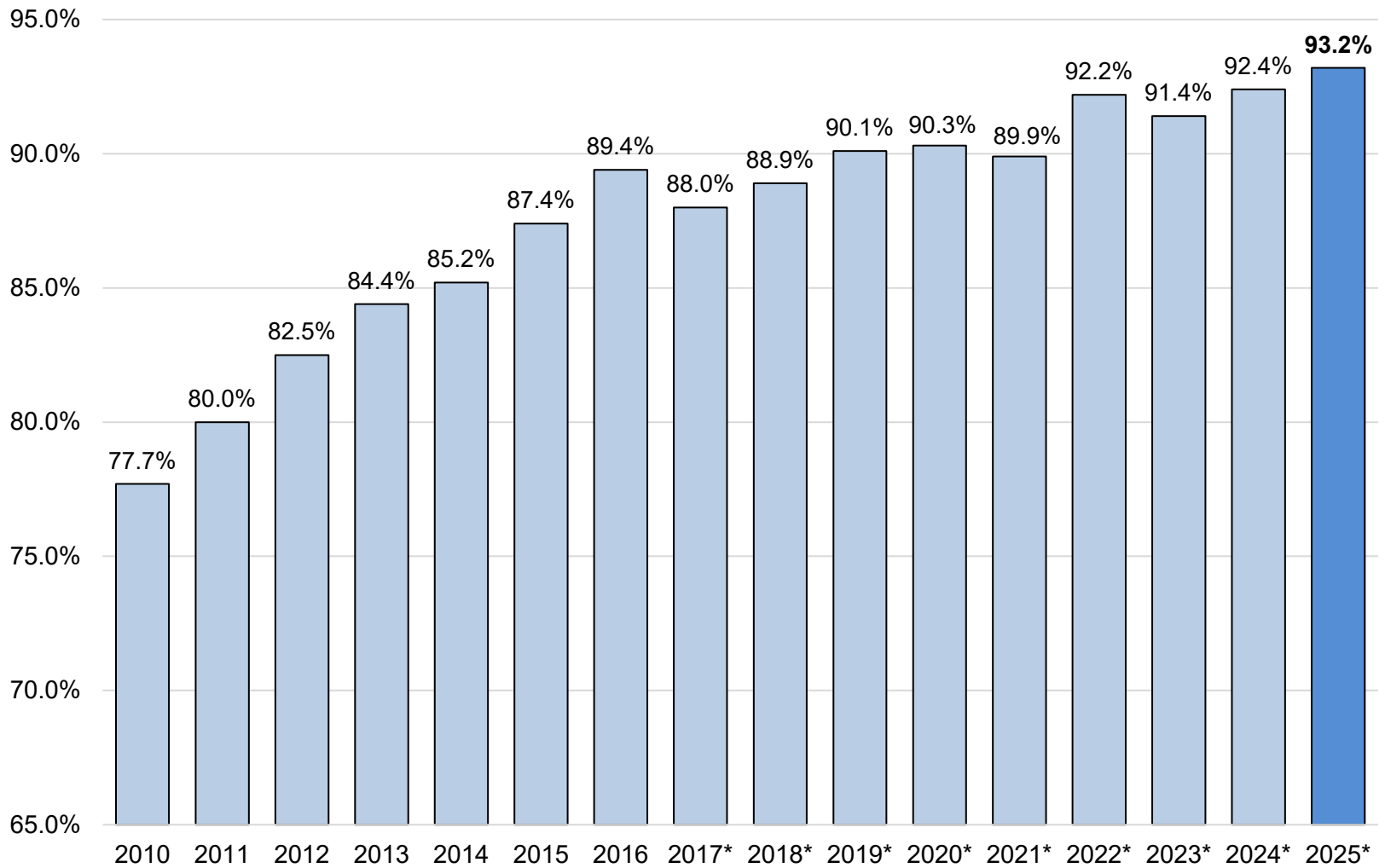
4. District A-G Completion and State Seal of Biliteracy Rates (All Schools): Pages 25-27

- 6 out of 18 districts (33%) exceeded the 2025 state A-G completion rate (53.9%). The highest A-G completion rates were reported by Temecula Valley Unified (71.3%), Murrieta Valley Unified (62.0%), Desert Sands Unified (61.4%), and Val Verde Unified (60.2%).
- 6 out of the 18 districts (33%) exceeded the State Seal of Biliteracy rate (16.3%), including Coachella Valley Unified (31.5%), Alvord Unified (19.7%), Murrieta Valley Unified (17.7%), Temecula Valley Unified (17.5%), and Palm Springs Unified (17.4%).

2025 Cohort Graduation Rates 10 Largest Counties in CA



2010-2025 Cohort Graduation Rates Riverside County



*NEW Adjusted Cohort Graduation Rate (ACGR) Ruled Applied

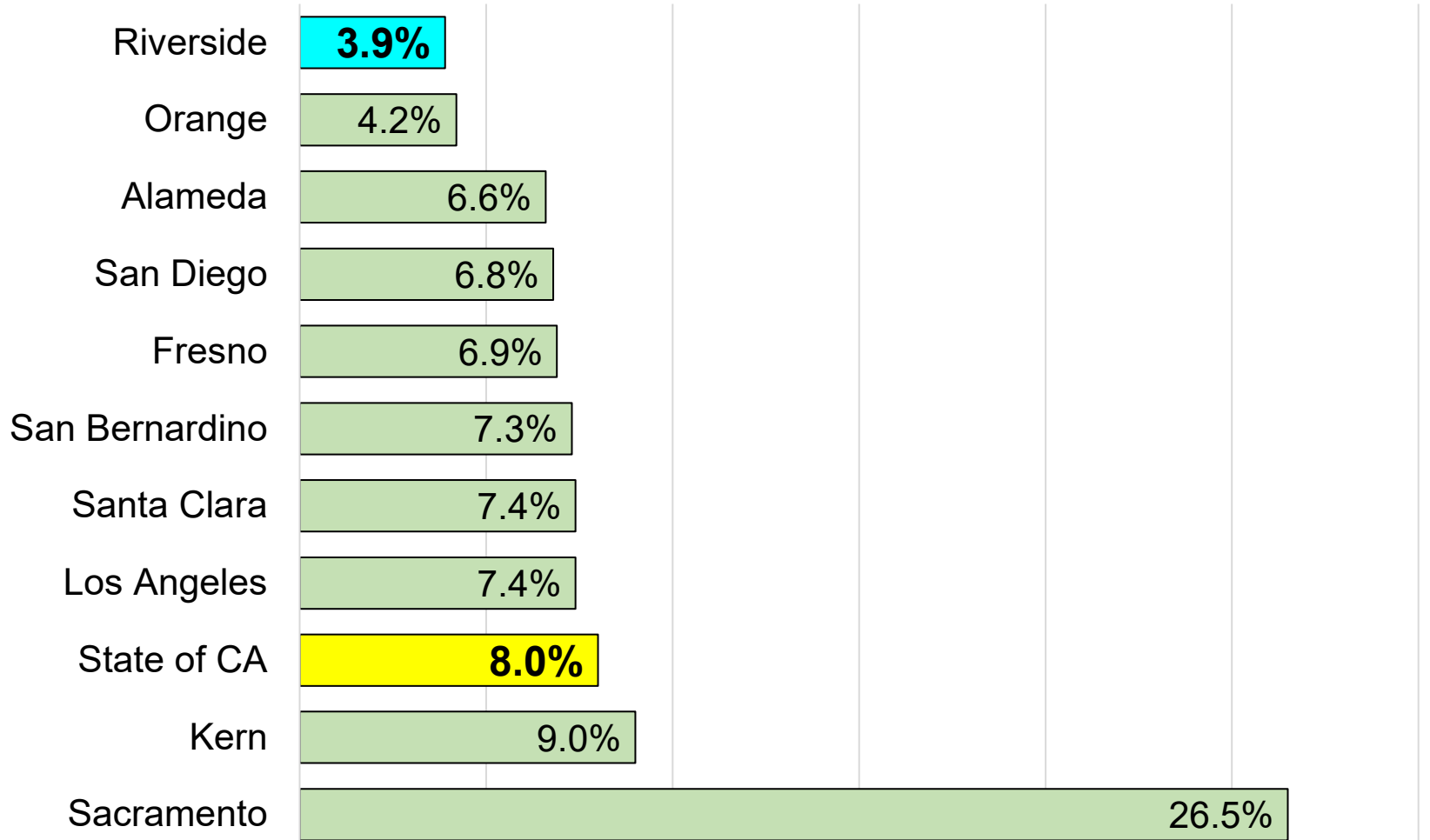
2010-2025 Cohort Graduation Rates

List of 10 Largest Counties in CA

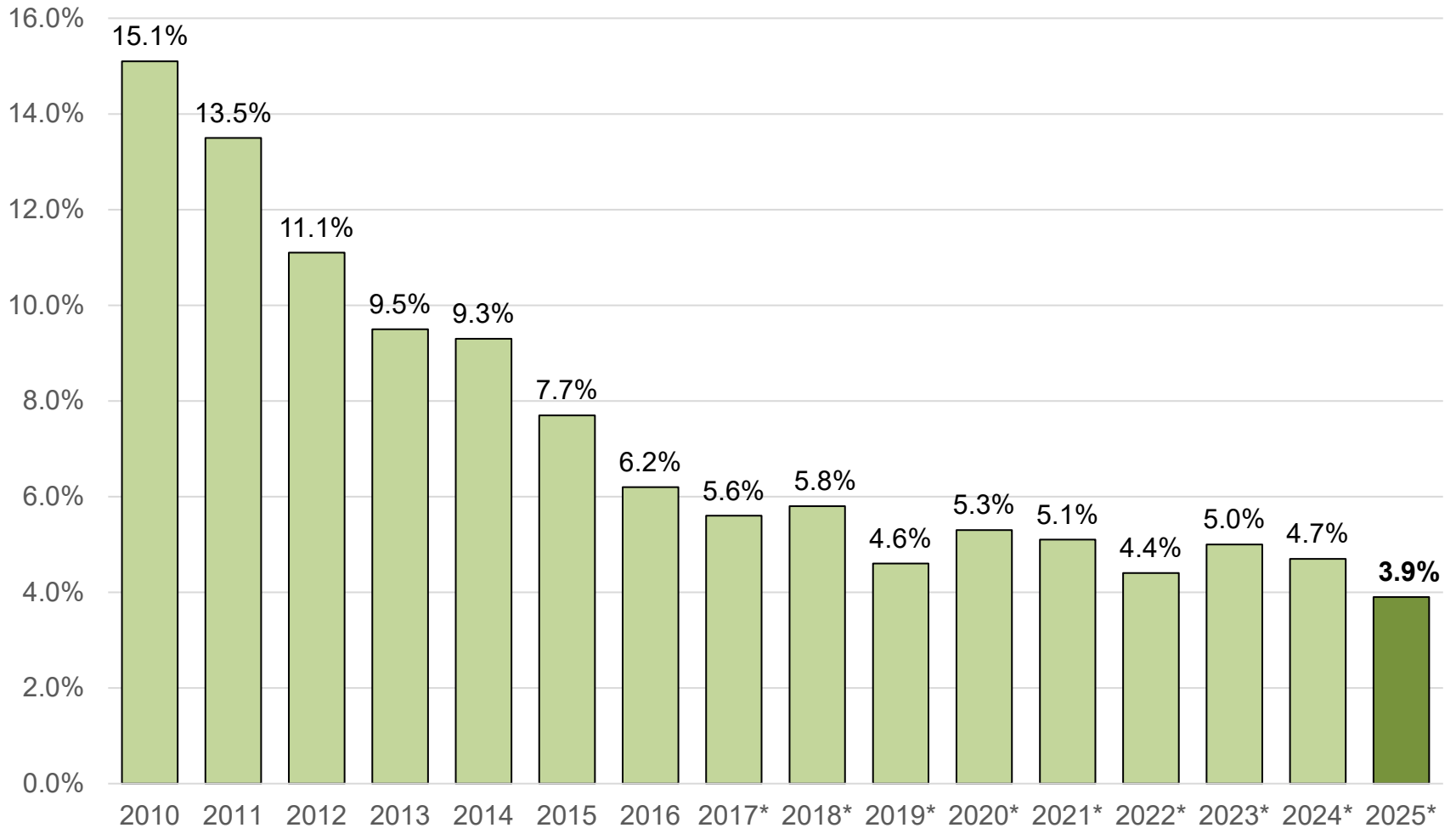
County	Number of 2025 Cohort Students	2010 Cohort Graduation Rate	2011 Cohort Graduation Rate	2012 Cohort Graduation Rate	2013 Cohort Graduation Rate	2014 Cohort Graduation Rate	2015 Cohort Graduation Rate	2016 Cohort Graduation Rate	2017 Cohort Graduation Rate*	2018 Cohort Graduation Rate*	2019 Cohort Graduation Rate*	2020 Cohort Graduation Rate*	2021 Cohort Graduation Rate*	2022 Cohort Graduation Rate*	2023 Cohort Graduation Rate*	2024 Cohort Graduation Rate*	2025 Cohort Graduation Rate*	2023 Cohort Graduation Rate Ranking*	2022-2023 Cohort Graduation Rate Change*	2010-2023 Cohort Graduation Rate Change*	2024 Cohort Graduation Rate Ranking*	2023-2024 Cohort Graduation Rate Change*	2010-2024 Cohort Graduation Rate Change*	2025 Cohort Graduation Rate Ranking*	2024-2025 Cohort Graduation Rate Change*	2010-2025 Cohort Graduation Rate Change*
Alameda	17,476	75.8	78.0	79.8	80.8	82.9	85.0	85.7	85.5	86.8	87.0	87.1	86.9	88.7	87.6	88.6	88.7	3	-1.1	11.8	3	1.0	12.8	3	0.1	12.9
Fresno	16,569	69.1	74.1	76.0	77.3	78.8	81.9	83.4	80.8	81.5	81.7	80.3	81.1	84.0	83.2	83.7	86.2	9	-0.8	14.1	9	0.5	14.6	9	2.5	17.1
Kern	14,999	74.0	75.3	76.2	76.4	79.7	82.5	84.3	85.3	85.8	86.9	85.7	83.6	87.1	84.5	86.1	87.6	7	-2.6	10.5	7	1.6	12.1	6	1.5	13.6
Los Angeles	111,737	70.5	73.7	75.1	77.1	77.9	78.7	81.6	80.8	81.6	81.8	82.2	82.4	86.1	84.4	86.7	87.6	8	-1.7	13.9	5	2.3	16.2	6	0.9	17.1
Orange	38,693	82.6	85.6	85.9	87.5	88.6	90.0	91.0	88.8	89.2	89.7	90.3	90.8	92.4	91.5	91.8	92.9	1	-0.9	8.9	2	0.3	9.2	2	1.1	10.3
Riverside	34,044	77.7	80.0	82.5	84.4	85.2	87.4	89.4	88.0	88.9	90.1	90.3	89.9	92.2	91.4	92.4	93.2	2	-0.8	13.7	1	1.0	14.7	1	0.8	15.5
Sacramento	25,724	72.3	74.3	77.0	79.4	80.5	80.6	81.4	80.8	81.0	82.0	83.6	80.6	84.0	81.5	69.1	67.8	10	-2.5	9.2	10	-12.4	-3.2	10	-1.3	-4.5
San Bernardino	32,813	70.4	74.3	77.2	78.6	78.7	80.7	83.0	82.6	83.4	84.6	80.7	83.5	86.6	85.5	86.2	87.8	5	-1.1	15.1	6	0.7	15.8	5	1.6	17.4
San Diego	40,691	74.9	77.5	79.0	79.8	79.7	81.8	81.9	80.4	81.1	81.9	82.9	82.5	85.4	84.6	84.6	86.3	6	-0.8	9.7	8	0.0	9.7	8	1.7	11.4
Santa Clara	20,618	80.5	80.0	82.2	82.9	83.8	83.6	83.1	83.8	85.2	85.9	80.4	86.2	88.9	87.3	87.8	88.3	4	-1.6	6.8	4	0.5	7.3	4	0.5	7.8
State of CA	496,796	74.7	77.1	78.9	80.4	81.0	82.3	83.8	82.7	83.0	84.5	84.2	83.6	87.0	86.2	86.4	87.5		-0.8	11.5		0.2	11.7		1.1	12.8

*NEW Adjusted Cohort Graduation Rate (ACGR) Rate Rules Applied

2025 Cohort Dropout Rates 10 Largest Counties in CA



2010-2025 Cohort Dropout Rates Riverside County



*NEW Adjusted Cohort Graduation Rate (ACGR) Rate Rules Applied

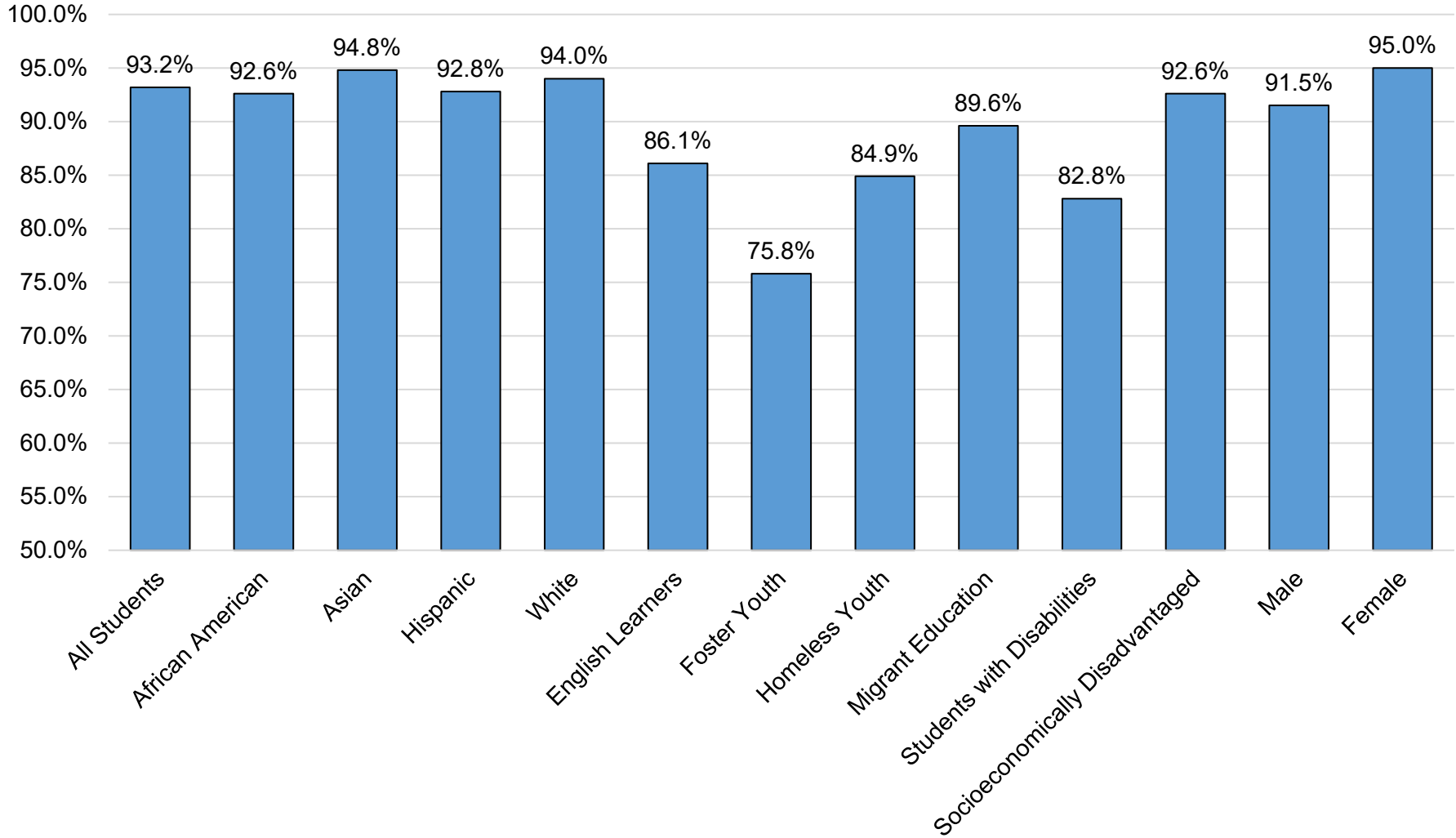
2010-2025 Cohort Dropout Rates

List of 10 Largest Counties in CA

County	Number of 2025 Cohort Students	2010 Cohort Dropout Rate	2011 Cohort Dropout Rate	2012 Cohort Dropout Rate	2013 Cohort Dropout Rate	2014 Cohort Dropout Rate	2015 Cohort Dropout Rate	2016 Cohort Dropout Rate	2017 Cohort Dropout Rate*	2018 Cohort Dropout Rate*	2019 Cohort Dropout Rate*	2020 Cohort Dropout Rate*	2021 Cohort Dropout Rate*	2022 Cohort Dropout Rate*	2023 Cohort Dropout Rate*	2024 Cohort Dropout Rate*	2025 Cohort Dropout Rate*	2023 Cohort Dropout Rate Ranking	2022-2023 Cohort Dropout Rate Change*	2010-2023 Cohort Dropout Rate Change*	2024 Cohort Dropout Rate Ranking	2023-2024 Cohort Dropout Rate Change*	2010-2024 Cohort Dropout Rate Change*	2025 Cohort Dropout Rate Ranking	2024-2025 Cohort Dropout Rate Ranking Change*	2010-2025 Cohort Dropout Rate Ranking Change*
Alameda	17,476	17.1	15.1	13.1	11.1	10.6	9.6	8.6	8.0	7.4	7.7	7.2	7.3	6.9	7.4	7.5	6.6	3	0.5	-9.7	4	0.1	-9.6	3	-0.9	-10.5
Fresno	16,569	21.5	17.3	15.2	14.4	13.3	11.5	10.1	10.0	9.4	9.4	11.2	8.7	8.0	8.7	10.1	6.9	6	0.7	-12.8	8	1.4	-11.4	5	-3.2	-14.6
Kern	14,999	17.9	16.6	16.8	16.5	14.5	12.2	10.8	8.3	8.2	8.0	7.9	10.0	8.9	8.9	10.9	9.0	7	0.0	-9.0	9	2.0	-7.0	9	-1.9	-8.9
Los Angeles	111,737	18.9	16.7	14.8	12.5	12.6	12.5	10.5	9.6	9.8	10.6	9.5	9.5	8.3	9.2	7.8	7.4	8	0.9	-9.7	5	-1.4	-11.1	7	-0.4	-11.5
Orange	38,693	12.3	9.5	8.9	7.3	6.7	5.7	5.2	5.3	5.3	5.1	5.0	4.0	4.0	4.8	4.9	4.2	1	0.8	-7.5	2	0.1	-7.4	2	-0.7	-8.1
Riverside	34,044	15.1	13.5	11.1	9.5	9.3	7.7	6.2	5.6	5.8	4.6	5.3	5.1	4.4	5.0	4.7	3.9	2	0.6	-10.1	1	-0.3	-10.4	1	-0.8	-11.2
Sacramento	25,724	18.2	16.0	13.6	11.3	10.7	10.4	10.2	9.7	9.9	8.7	7.8	10.8	9.8	10.5	24.5	26.5	10	0.7	-7.7	10	14.0	6.3	10	2.0	8.3
San Bernardino	32,813	19.1	15.7	13.3	12.1	12.2	11.4	10.1	9.5	9.7	9.5	12.0	8.8	8.0	9.2	8.9	7.3	8	1.2	-9.9	7	-0.3	-10.2	6	-1.6	-11.8
San Diego	40,691	13.1	11.0	10.1	9.2	9.7	8.3	7.9	7.6	7.8	8.3	8.1	7.7	7.1	8.0	7.9	6.8	4	0.9	-5.1	6	-0.1	-5.2	4	-1.1	-6.3
Santa Clara	20,618	13.9	14.2	12.1	11.1	11.0	11.1	11.9	9.9	9.5	9.0	13.8	7.7	7.0	8.2	7.3	7.4	5	1.2	-5.7	3	-0.9	-6.6	7	0.1	-6.5
State of CA	496,796	16.6	14.7	13.1	11.4	11.5	10.7	9.7	9.1	9.6	9.0	8.9	9.4	7.8	8.2	8.9	8.0		0.4	-8.4		0.7	-7.7		-0.9	-8.6

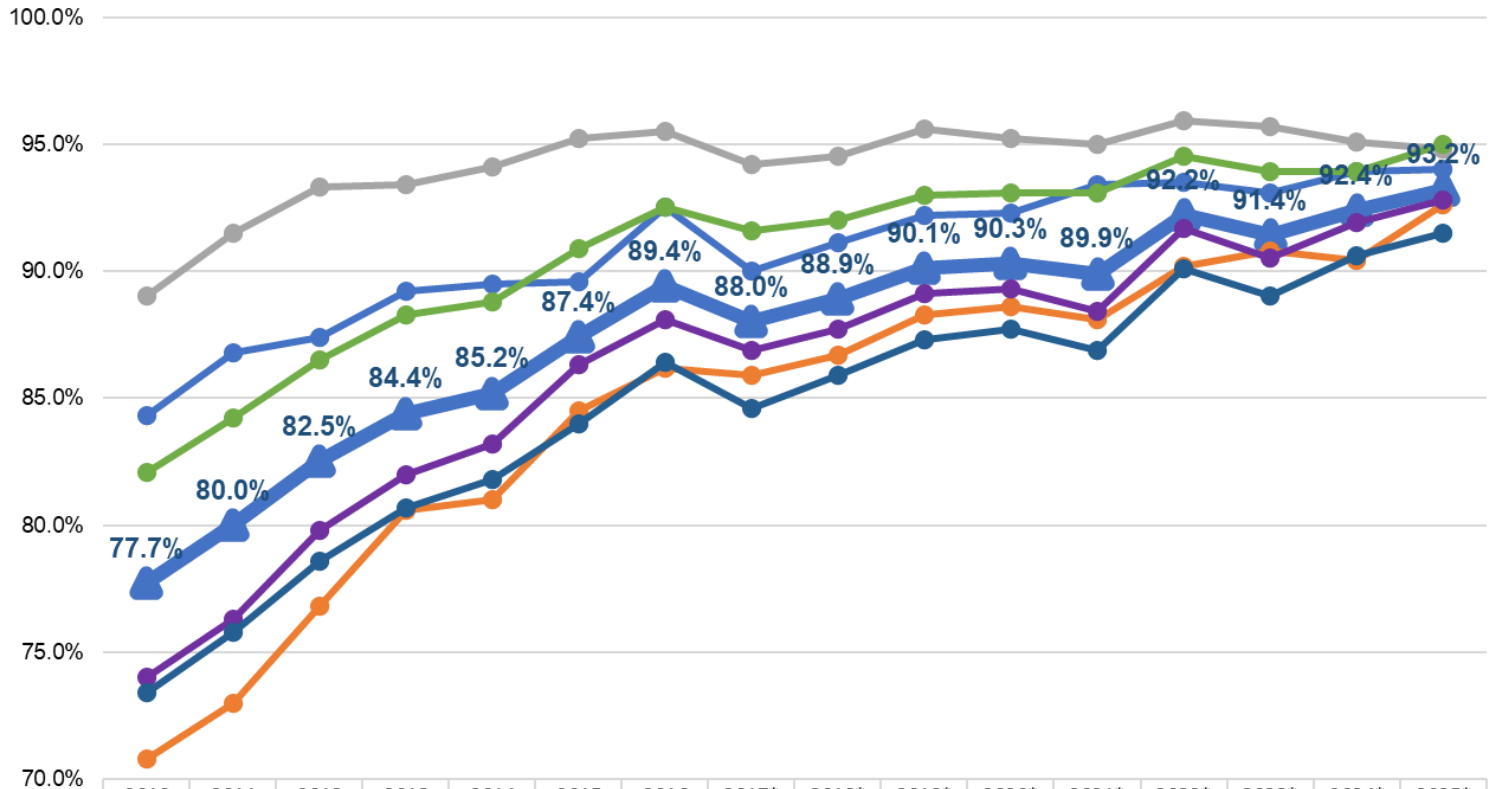
*NEW Adjusted Cohort Graduation Rate (ACGR) Rate Rules Applied

2025 Riverside County Cohort Graduation Rates Student Groups Comparison



*NEW Adjusted Cohort Graduation Rate (ACGR) Rate Rules Applied

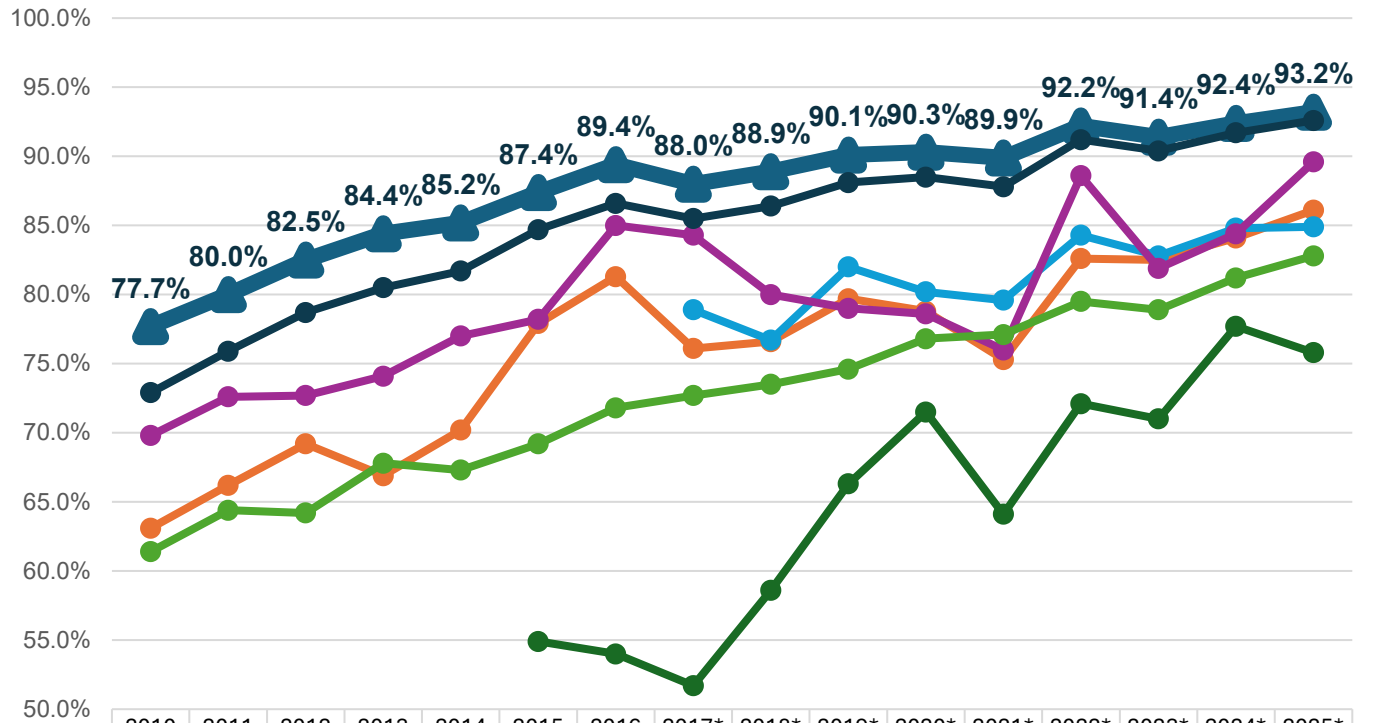
2010-2025 Riverside County Cohort Graduation Rates Ethnicity and Gender Comparison



	2010	2011	2012	2013	2014	2015	2016	2017*	2018*	2019*	2020*	2021*	2022*	2023*	2024*	2025*
All Students	77.7%	80.0%	82.5%	84.4%	85.2%	87.4%	89.4%	88.0%	88.9%	90.1%	90.3%	89.9%	92.2%	91.4%	92.4%	93.2%
African American	70.8%	73.0%	76.8%	80.6%	81.0%	84.5%	86.2%	85.9%	86.7%	88.3%	88.6%	88.1%	90.2%	90.8%	90.4%	92.6%
Asian	89.0%	91.5%	93.3%	93.4%	94.1%	95.2%	95.5%	94.2%	94.5%	95.6%	95.2%	95.0%	95.9%	95.7%	95.1%	94.8%
Hispanic or Latino	74.0%	76.3%	79.8%	82.0%	83.2%	86.3%	88.1%	86.9%	87.7%	89.1%	89.3%	88.4%	91.7%	90.5%	91.9%	92.8%
White	84.3%	86.8%	87.4%	89.2%	89.5%	89.6%	92.5%	90.0%	91.1%	92.2%	92.3%	93.4%	93.5%	93.1%	93.9%	94.0%
Female	82.1%	84.2%	86.5%	88.3%	88.8%	90.9%	92.5%	91.6%	92.0%	93.0%	93.1%	93.1%	94.5%	93.9%	93.9%	95.0%
Male	73.4%	75.8%	78.6%	80.7%	81.8%	84.0%	86.4%	84.6%	85.9%	87.3%	87.7%	86.9%	90.1%	89.0%	90.6%	91.5%

*NEW Adjusted Cohort Graduation Rate (ACGR) Rate Rules Applied

2010-2025 Riverside County Cohort Graduation Rates Program Comparison



	2010	2011	2012	2013	2014	2015	2016	2017*	2018*	2019*	2020*	2021*	2022*	2023*	2024*	2025*
All Students	77.7%	80.0%	82.5%	84.4%	85.2%	87.4%	89.4%	88.0%	88.9%	90.1%	90.3%	89.9%	92.2%	91.4%	92.4%	93.2%
English Learners	63.1%	66.2%	69.2%	66.9%	70.2%	77.9%	81.3%	76.1%	76.6%	79.7%	78.8%	75.3%	82.6%	82.5%	84.1%	86.1%
Foster Youth						54.9%	54.0%	51.7%	58.6%	66.3%	71.5%	64.1%	72.1%	71.0%	77.7%	75.8%
Homeless Youth								78.9%	76.7%	82.0%	80.2%	79.6%	84.3%	82.8%	84.8%	84.9%
Migrant Education	69.8%	72.6%	72.7%	74.1%	77.0%	78.2%	85.0%	84.3%	80.0%	79.0%	78.6%	76.0%	88.6%	81.9%	84.4%	89.6%
Students with Disabilities	61.4%	64.4%	64.2%	67.8%	67.3%	69.2%	71.8%	72.7%	73.5%	74.6%	76.8%	77.1%	79.5%	78.9%	81.2%	82.8%
Socioeconomically Disadvantaged	72.9%	75.9%	78.7%	80.5%	81.7%	84.7%	86.6%	85.5%	86.4%	88.1%	88.5%	87.8%	91.2%	90.4%	91.7%	92.6%

*NEW Adjusted Cohort Graduation Rate (ACGR) Rate Rules Applied

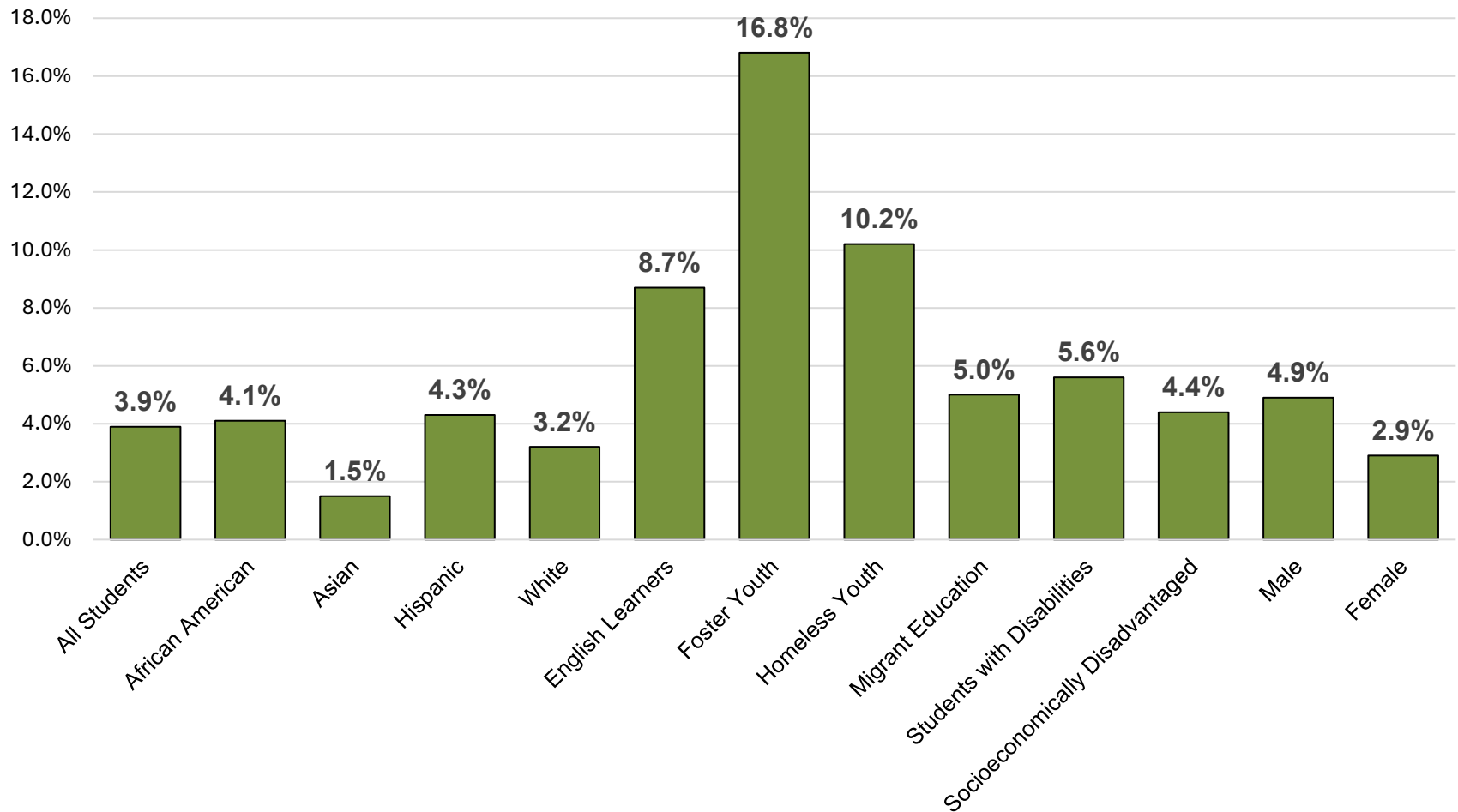
2010-2025 Cohort Graduation Rates

Riverside County Student Groups Comparison

Student Group	Number of 2025 Cohort Students	2010 Cohort Graduation Rate	2011 Cohort Graduation Rate	2012 Cohort Graduation Rate	2013 Cohort Graduation Rate	2014 Cohort Graduation Rate	2015 Cohort Graduation Rate	2016 Cohort Graduation Rate	2017 Cohort Graduation Rate*	2018 Cohort Graduation Rate*	2019 Cohort Graduation Rate*	2020 Cohort Graduation Rate*	2021 Cohort Graduation Rate*	2022 Cohort Graduation Rate*	2023 Cohort Graduation Rate*	2024 Cohort Graduation Rate*	2025 Cohort Graduation Rate*	2022-2023 Cohort Graduation Rate Change*	2010-2023 Cohort Graduation Rate Change*	2023-2024 Cohort Graduation Rate Change*	2010-2024 Cohort Graduation Rate Change*	2024-2025 Cohort Graduation Rate Change*	2010-2025 Cohort Graduation Rate Change*
All Students	34,044	77.7	80.0	82.5	84.4	85.2	87.4	89.4	88.0	88.9	90.1	90.3	89.9	92.2	91.4	92.4	93.2	-0.8	13.7	1.0	14.7	0.8	15.5
African American	1,980	70.8	73.0	76.8	80.6	81.0	84.5	86.2	85.9	86.7	88.3	88.6	88.1	90.2	90.8	90.4	92.6	0.6	20.0	-0.4	19.6	2.2	21.8
American Indian or Alaska Native	152	70.5	82.9	74.9	76.2	75.7	80.6	86.1	78.9	78.6	80.1	88.2	81.0	85.4	88.4	86.6	81.6	3.0	17.9	-1.8	16.1	-5.0	11.1
Asian	1,228	89.0	91.5	93.3	93.4	94.1	95.2	95.5	94.2	94.5	95.6	95.2	95.0	95.9	95.7	95.1	94.8	-0.2	6.7	-0.6	6.1	-0.3	5.8
Filipino	724	90.0	91.6	94.5	94.1	94.6	95.8	97.2	97.2	96.6	96.0	96.0	96.0	96.8	96.7	96.8	97.5	-0.1	6.7	0.1	6.8	0.7	7.5
Hispanic or Latino	22,829	74.0	76.3	79.8	82.0	83.2	86.3	88.1	86.9	87.7	89.1	89.3	88.4	91.7	90.5	91.9	92.8	-1.2	16.5	1.4	17.9	0.9	18.8
Pacific Islander	134	76.5	75.5	87.7	85.0	87.9	85.6	89.5	92.6	90.2	95.2	91.7	94.7	94.4	94.0	92.8	93.3	-0.4	17.5	-1.2	16.3	0.5	16.8
White	5,648	84.3	86.8	87.4	89.2	89.5	89.6	92.5	90.0	91.1	92.2	92.3	93.4	93.5	93.1	93.9	94.0	-0.4	8.8	0.8	9.6	0.1	9.7
Two or More Races	1,162	83.0	89.4	86.1	86.2	87.0	83.8	87.1	89.8	92.6	91.3	93.3	92.9	93.8	93.5	92.9	94.0	-0.3	10.5	-0.6	9.9	1.1	11.0
No Ethnicity Reported	187	71.3	69.0	70.1	79.4	84.7	83.1	73.5	74.2	76.6	85.0	92.0	86.8	89.1	88.7	91.2	93.6	-0.4	17.4	2.5	19.9	2.4	22.3
English Learners	5,364	63.1	66.2	69.2	66.9	70.2	77.9	81.3	76.1	76.6	79.7	78.8	75.3	82.6	82.5	84.1	86.1	-0.1	19.4	1.6	21.0	2.0	23.0
Foster Youth	422	n/a	n/a	n/a	n/a	n/a	54.9	54.0	51.7	58.6	66.3	71.5	64.1	72.1	71.0	77.7	75.8	-1.1	n/a	6.7	n/a	-1.9	n/a
Homeless Youth	2,522	n/a	n/a	n/a	n/a	n/a	n/a	n/a	78.9	76.7	82.0	80.2	79.6	84.3	82.8	84.8	84.9	-1.5	n/a	2.0	n/a	0.1	n/a
Migrant Education	240	69.8	72.6	72.7	74.1	77.0	78.2	85.0	84.3	80.0	79.0	78.6	76.0	88.6	81.9	84.4	89.6	-6.7	12.1	2.5	14.6	5.2	19.8
Students with Disabilities	4,980	61.4	64.4	64.2	67.8	67.3	69.2	71.8	72.7	73.5	74.6	76.8	77.1	79.5	78.9	81.2	82.8	-0.6	17.5	2.3	19.8	1.6	21.4
Socioeconomically Disadvantaged	28,382	72.9	75.9	78.7	80.5	81.7	84.7	86.8	85.5	86.4	88.1	88.5	87.8	91.2	90.4	91.7	92.6	-0.8	17.5	1.3	18.8	0.9	19.7
Female	16,548	82.1	84.2	86.5	88.3	88.8	90.9	92.5	91.6	92.0	93.0	93.1	93.1	94.5	93.9	94.3	95.0	-0.6	11.8	0.4	12.2	0.7	12.9
Male	17,453	73.4	75.8	78.6	80.7	81.8	84.0	86.4	84.6	85.9	87.3	87.7	86.9	90.1	89.0	90.6	91.5	-1.1	15.6	1.6	17.2	0.9	18.1

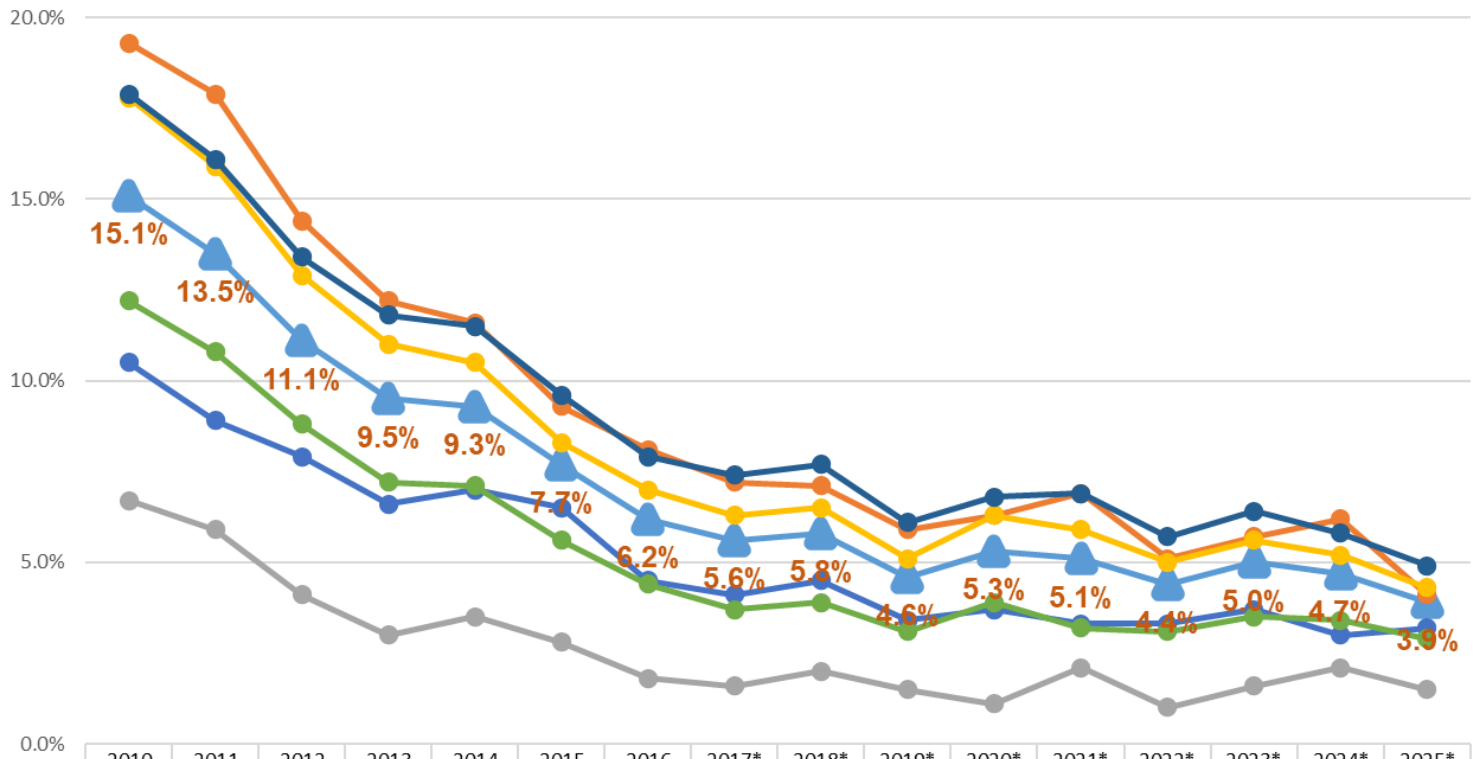
*NEW Adjusted Cohort Graduation Rate (ACGR) Rate Rules Applied

2025 Riverside County Cohort Dropout Rates Student Groups Comparision



Notes: NEW Adjusted Cohort Graduation Rate (ACGR) Rules Applied

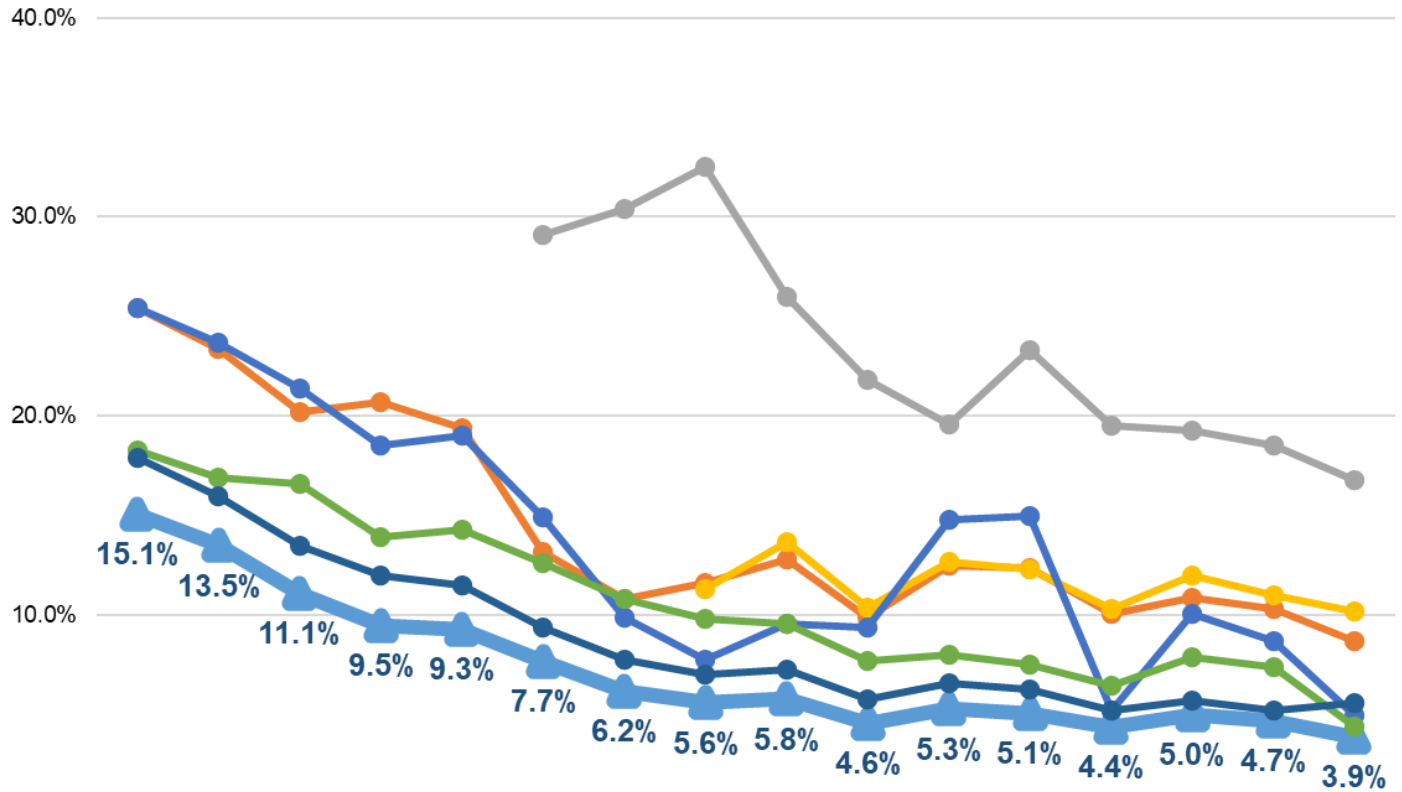
2010-2025 Riverside County Cohort Dropout Rates Ethnicity and Gender Comparison



	2010	2011	2012	2013	2014	2015	2016	2017*	2018*	2019*	2020*	2021*	2022*	2023*	2024*	2025*
All Students	15.1%	13.5%	11.1%	9.5%	9.3%	7.7%	6.2%	5.6%	5.8%	4.6%	5.3%	5.1%	4.4%	5.0%	4.7%	3.9%
African American	19.3%	17.9%	14.4%	12.2%	11.6%	9.3%	8.1%	7.2%	7.1%	5.9%	6.3%	6.9%	5.1%	5.7%	6.2%	4.1%
Asian	6.7%	5.9%	4.1%	3.0%	3.5%	2.8%	1.8%	1.6%	2.0%	1.5%	1.1%	2.1%	1.0%	1.6%	2.1%	1.5%
Hispanic or Latino	17.8%	15.9%	12.9%	11.0%	10.5%	8.3%	7.0%	6.3%	6.5%	5.1%	6.3%	5.9%	5.0%	5.6%	5.2%	4.3%
White	10.5%	8.9%	7.9%	6.6%	7.0%	6.5%	4.5%	4.1%	4.5%	3.4%	3.7%	3.3%	3.3%	3.7%	3.0%	3.2%
Female	12.2%	10.8%	8.8%	7.2%	7.1%	5.6%	4.4%	3.7%	3.9%	3.1%	3.9%	3.2%	3.1%	3.5%	3.4%	2.9%
Male	17.9%	16.1%	13.4%	11.8%	11.5%	9.6%	7.9%	7.4%	7.7%	6.1%	6.8%	6.9%	5.7%	6.4%	5.8%	4.9%

*NEW Adjusted Cohort Graduation Rate (ACGR) Rate Rules Applied

2010-2025 Riverside County Cohort Dropout Rates Program Comparison



	2010	2011	2012	2013	2014	2015	2016	2017*	2018*	2019*	2020*	2021*	2022*	2023*	2024*	2025*
All Students	15.1%	13.5%	11.1%	9.5%	9.3%	7.7%	6.2%	5.6%	5.8%	4.6%	5.3%	5.1%	4.4%	5.0%	4.7%	3.9%
English Learners	25.4%	23.4%	20.2%	20.7%	19.4%	13.2%	10.8%	11.6%	12.8%	9.9%	12.5%	12.4%	10.1%	10.9%	10.3%	8.7%
Foster Youth						29.1%	30.4%	32.5%	26.0%	21.8%	19.6%	23.3%	19.5%	19.3%	18.5%	16.8%
Homeless Youth								11.3%	13.7%	10.4%	12.7%	12.3%	10.3%	12.0%	11.0%	10.2%
Migrant Education	25.4%	23.7%	21.4%	18.5%	19.0%	14.9%	9.9%	7.8%	9.6%	9.4%	14.8%	15.0%	5.2%	10.1%	8.7%	5.0%
Students with Disabilities	18.3%	16.9%	16.6%	13.9%	14.3%	12.6%	10.8%	9.8%	9.6%	7.7%	8.0%	7.5%	6.5%	7.9%	7.4%	4.4%
Socioeconomically Disadvantaged	17.9%	16.0%	13.5%	12.0%	11.5%	9.4%	7.8%	7.0%	7.3%	5.8%	6.6%	6.3%	5.2%	5.7%	5.2%	5.6%

*NEW Adjusted Cohort Graduation Rate (ACGR) Rate Rules Applied

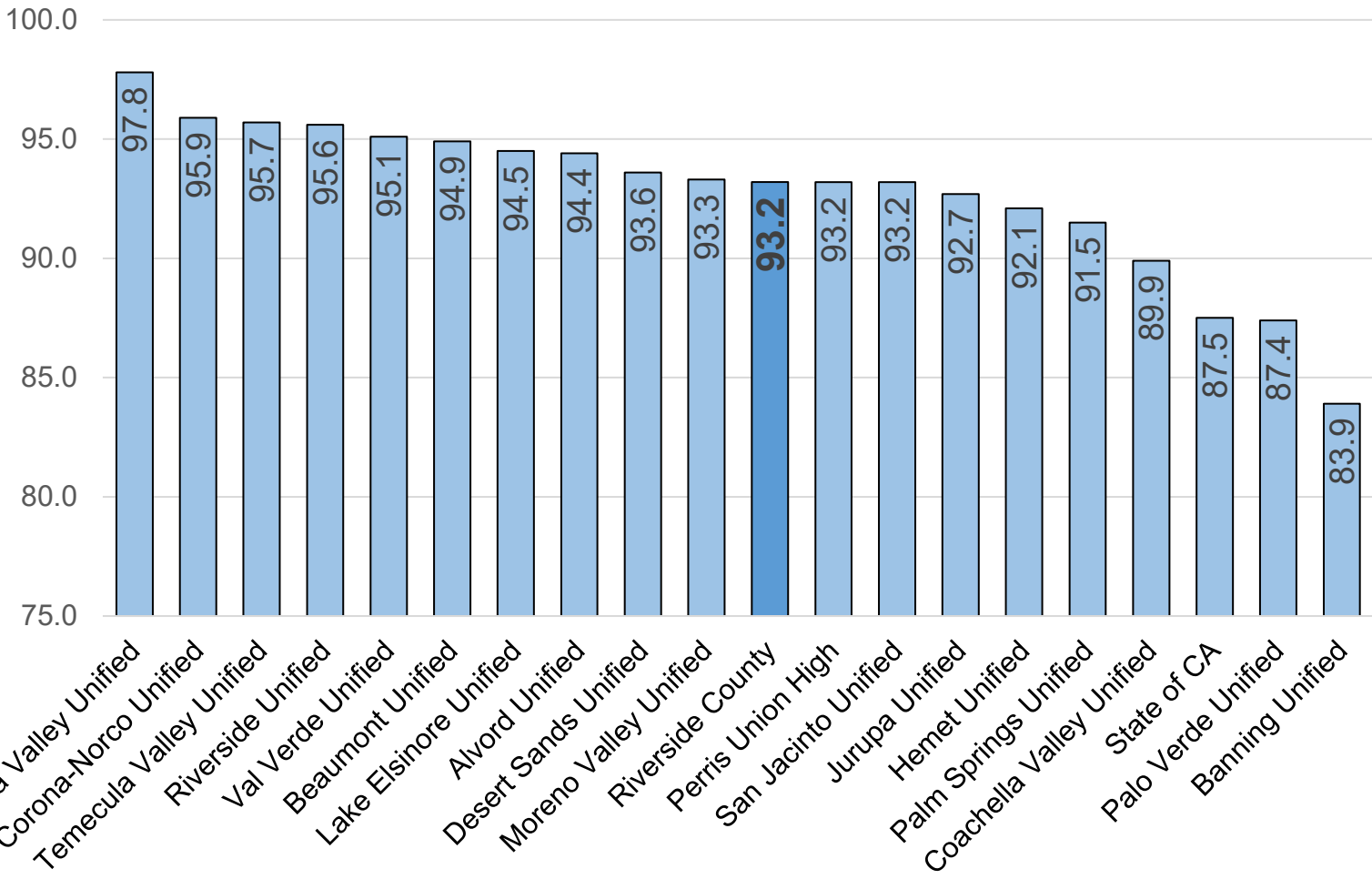
2010-2025 Cohort Dropout Rates

Riverside County Student Groups Comparison

Student Group	Number of 2025 Cohort Students	2010 Cohort Dropout Rate	2011 Cohort Dropout Rate	2012 Cohort Dropout Rate	2013 Cohort Dropout Rate	2014 Cohort Dropout Rate	2015 Cohort Dropout Rate	2016 Cohort Dropout Rate	2017 Cohort Dropout Rate*	2018 Cohort Dropout Rate*	2019 Cohort Dropout Rate*	2020 Cohort Dropout Rate*	2021 Cohort Dropout Rate*	2022 Cohort Dropout Rate*	2023 Cohort Dropout Rate*	2024 Cohort Dropout Rate*	2025 Cohort Dropout Rate*	2024-2025 Cohort Dropout Rate Change*	2010-2025 Cohort Dropout Rate Change*
All Students	34,044	15.1	13.5	11.1	9.5	9.3	7.7	6.2	5.6	5.8	4.6	5.3	5.1	4.4	5.0	4.7	3.9	-0.8	-11.2
African American	1,980	19.3	17.9	14.4	12.2	11.6	9.3	8.1	7.2	7.1	5.9	6.3	6.9	5.1	5.7	6.2	4.1	-2.1	-15.2
American Indian or Alaska Native	152	18.6	10.9	16.9	20.4	17.6	10.3	8.9	10.9	11.3	10.5	5.9	8.5	10.5	6.8	6.3	11.2	4.9	-7.4
Asian	1,228	6.7	5.9	4.1	3.0	3.5	2.8	1.8	1.6	2.0	1.5	1.1	2.1	1.0	1.6	2.1	1.5	-0.6	-5.2
Filipino	724	5.7	5.2	3.3	2.5	3.1	2.1	1.1	0.3	1.4	0.8	1.0	0.5	1.0	0.8	0.9	0.4	-0.5	-5.3
Hispanic or Latino	22,829	17.8	15.9	12.9	11.0	10.5	8.3	7.0	6.3	6.5	5.1	6.3	5.9	5.0	5.6	5.2	4.3	-0.9	-13.5
Pacific Islander	134	18.3	17.7	8.6	11.4	7.9	7.6	6.3	2.9	4.9	3.2	5.3	2.7	3.2	3.4	4.1	4.5	0.4	-13.8
White	5,648	10.5	8.9	7.9	6.6	7.0	6.5	4.5	4.1	4.5	3.4	3.7	3.3	3.3	3.7	3.0	3.2	0.2	-7.3
Two or More Races	1,162	9.6	6.2	8.2	9.9	8.9	11.1	7.6	4.2	4.2	4.9	2.8	3.0	3.2	3.7	4.9	3.0	-1.9	-6.6
No Ethnicity Reported	187	28.7	27.6	28.6	13.7	15.3	14.3	25.3	18.0	11.7	10.9	4.6	7.9	5.2	5.2	3.9	4.8	0.9	-23.9
English Learners	5,364	25.4	23.4	20.2	20.7	19.4	13.2	10.8	11.6	12.8	9.9	12.5	12.4	10.1	10.9	10.3	8.7	-1.6	-16.7
Foster Youth	422	n/a	n/a	n/a	n/a	n/a	29.1	30.4	32.5	26.0	21.8	19.6	23.3	19.5	19.3	18.5	16.8	-1.7	n/a
Homeless Youth	2,522	n/a	n/a	n/a	n/a	n/a	n/a	n/a	11.3	13.7	10.4	12.7	12.3	10.3	12.0	11.0	10.2	-0.8	n/a
Migrant Education	240	25.4	23.7	21.4	18.5	19.0	14.9	9.9	7.8	9.6	9.4	14.8	15.0	5.2	10.1	8.7	5.0	-3.7	-20.4
Students with Disabilities	4,980	18.3	16.9	16.6	13.9	14.3	12.6	10.8	9.8	9.6	7.7	8.0	7.5	6.5	7.9	7.4	5.6	-1.8	-12.7
Socioeconomically Disadvantaged	28,382	17.9	16.0	13.5	12.0	11.5	9.4	7.8	7.0	7.3	5.8	6.6	6.3	5.2	5.7	5.2	4.4	-0.8	-13.5
Female	16,548	12.2	10.8	8.8	7.2	7.1	5.6	4.4	3.7	3.9	3.1	3.9	3.2	3.1	3.5	3.4	2.9	-0.5	-9.3
Male	17,453	17.9	16.1	13.4	11.8	11.5	9.6	7.9	7.4	7.7	6.1	6.8	6.9	5.7	6.4	5.8	4.9	-0.9	-13.0

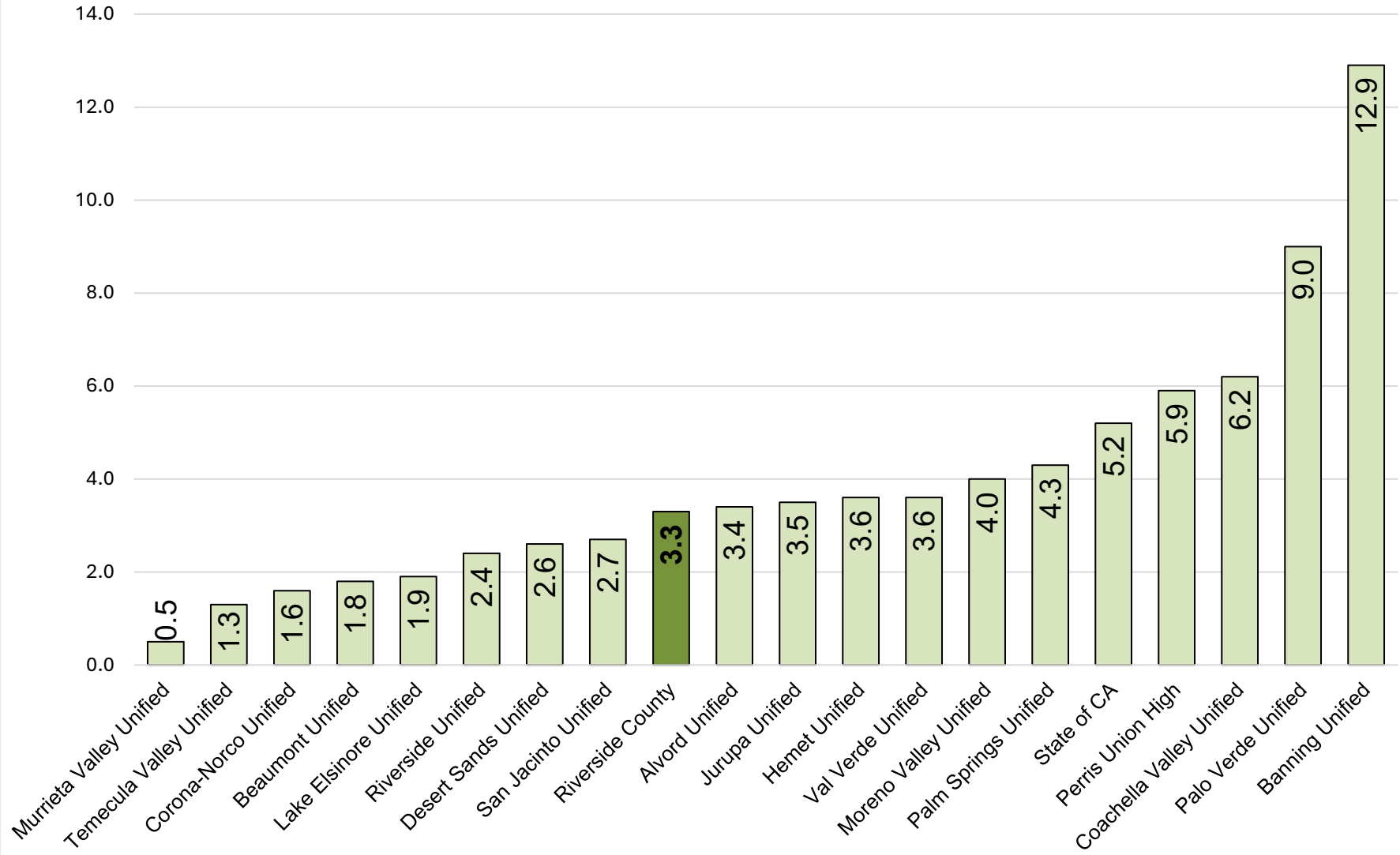
*NEW Adjusted Cohort Graduation Rate (ACGR) Rate Rules Applied

Districts in Riverside County 2025 Cohort Graduation Rates



Notes: NEW Adjusted Cohort Graduation Rate (ACGR) Rules Applied

Districts in Riverside County 2025 Cohort Dropout Rates



Notes: NEW Adjusted Cohort Graduation Rate (ACGR) Rules Applied

2010-2025 Cohort Graduation Rates

List of Districts in Riverside County

District	Number of 2025 Cohort Students	2010 Cohort Graduation Rate	2011 Cohort Graduation Rate	2012 Cohort Graduation Rate	2013 Cohort Graduation Rate	2014 Cohort Graduation Rate	2015 Cohort Graduation Rate	2016 Cohort Graduation Rate	2017 Cohort Graduation Rate*	2018 Cohort Graduation Rate*	2019 Cohort Graduation Rate*	2020 Cohort Graduation Rate*	2021 Cohort Graduation Rate*	2022 Cohort Graduation Rate*	2023 Cohort Graduation Rate*	2024 Cohort Graduation Rate*	2025 Cohort Graduation Rate*	2024-2025 Cohort Graduation Rate Change*	2010-2025 Cohort Graduation Rate Change*
Alvord Unified	1,270	77.0	77.0	78.5	80.2	84.1	86.5	89.7	90.1	89.8	91.7	88.2	85.9	94.5	94.9	93.1	94.4	1.3	17.4
Banning Unified	341	80.7	82.4	80.2	83.7	80.9	78.0	83.9	68.0	68.6	67.3	69.1	76.0	83.6	83.3	85.9	83.9	-2.0	3.2
Beaumont Unified	966	77.2	85.9	86.9	88.9	85.1	87.4	90.5	90.8	92.5	91.6	95.8	91.4	91.8	92.5	94.5	94.9	0.4	17.7
Coachella Valley Unified	1,223	72.7	74.4	77.8	79.1	78.3	83.6	86.1	83.1	81.0	79.6	82.7	75.7	88.1	78.6	84.9	89.9	5.0	17.2
Corona-Norco Unified	4,260	87.5	88.6	91.0	91.9	92.4	92.4	94.9	93.2	93.8	93.4	94.5	95.2	96.1	94.9	96.3	95.9	-0.4	8.4
Desert Sands Unified	2,249	84.0	83.8	85.9	85.6	87.5	89.4	91.0	89.2	89.6	90.5	90.8	92.6	94.4	93.8	92.9	93.6	0.7	9.6
Hemet Unified	1,812	76.3	80.8	79.6	79.0	81.5	81.4	87.4	82.8	87.2	86.7	85.5	89.8	88.6	89.1	90.3	92.1	1.8	15.8
Jurupa Unified	1,465	77.7	81.1	82.1	82.0	82.4	89.2	91.6	90.4	90.7	90.1	91.5	86.3	92.0	94.1	93.4	92.7	-0.7	15.0
Lake Elsinore Unified	1,740	88.8	89.8	89.8	88.8	89.1	89.7	91.9	85.6	87.4	88.8	90.5	89.6	92.9	93.7	93.5	94.5	1.0	5.7
Moreno Valley Unified	2,491	65.7	69.9	74.7	81.5	82.9	86.2	87.7	87.8	89.3	91.2	90.6	91.0	92.2	91.4	92.8	93.3	0.5	27.6
Murrieta Valley Unified	1,888	86.0	89.7	92.1	94.4	94.0	92.5	95.2	96.2	97.0	96.4	96.9	96.3	96.3	96.7	97.7	97.8	0.1	11.8
Palm Springs Unified	1,686	81.2	80.2	83.7	87.2	87.3	90.8	88.9	90.5	92.4	91.5	89.9	86.6	89.3	89.3	90.3	91.5	1.2	10.3
Palo Verde Unified	222	72.8	78.6	70.5	81.7	74.6	80.2	80.7	88.0	86.9	87.8	76.9	79.3	87.4	92.7	83.7	87.4	3.7	14.6
Perris Union High	2,487	80.2	83.1	83.9	84.4	82.7	87.0	92.3	90.7	90.5	91.7	91.7	90.6	91.5	91.6	94.1	93.2	-0.9	13.0
Riverside Unified	3,007	81.9	81.0	81.8	85.5	87.2	89.4	89.3	91.0	91.1	95.2	95.2	94.3	94.1	92.5	94.5	95.6	1.1	13.7
San Jacinto Unified	827	72.8	79.3	78.8	81.6	86.7	87.5	91.7	86.2	88.7	94.2	90.9	90.9	94.5	91.5	92.1	93.2	1.1	20.4
Temecula Valley Unified	2,371	91.7	92.4	93.3	94.0	94.3	93.8	94.6	92.9	93.8	92.5	93.7	94.6	94.7	93.8	93.9	95.7	1.8	4.0
Val Verde Unified	1,727	78.2	81.9	89.5	90.2	91.2	92.3	93.3	93.2	93.2	94.5	92.7	90.3	93.4	93.1	94.1	95.1	1.0	16.9
Riverside County	34,044	77.7	80.0	82.5	84.4	85.2	87.4	89.4	88.0	88.9	90.1	90.3	89.9	92.8	92.1	93.1	93.2	0.1	15.5
State of CA	496,796	74.7	77.1	78.9	80.4	81.0	82.3	83.8	82.7	83.0	84.5	84.2	83.6	90.4	89.1	86.4	87.5	1.1	12.8

*NEW Adjusted Cohort Graduation Rate (ACGR) Rate Rules Applied

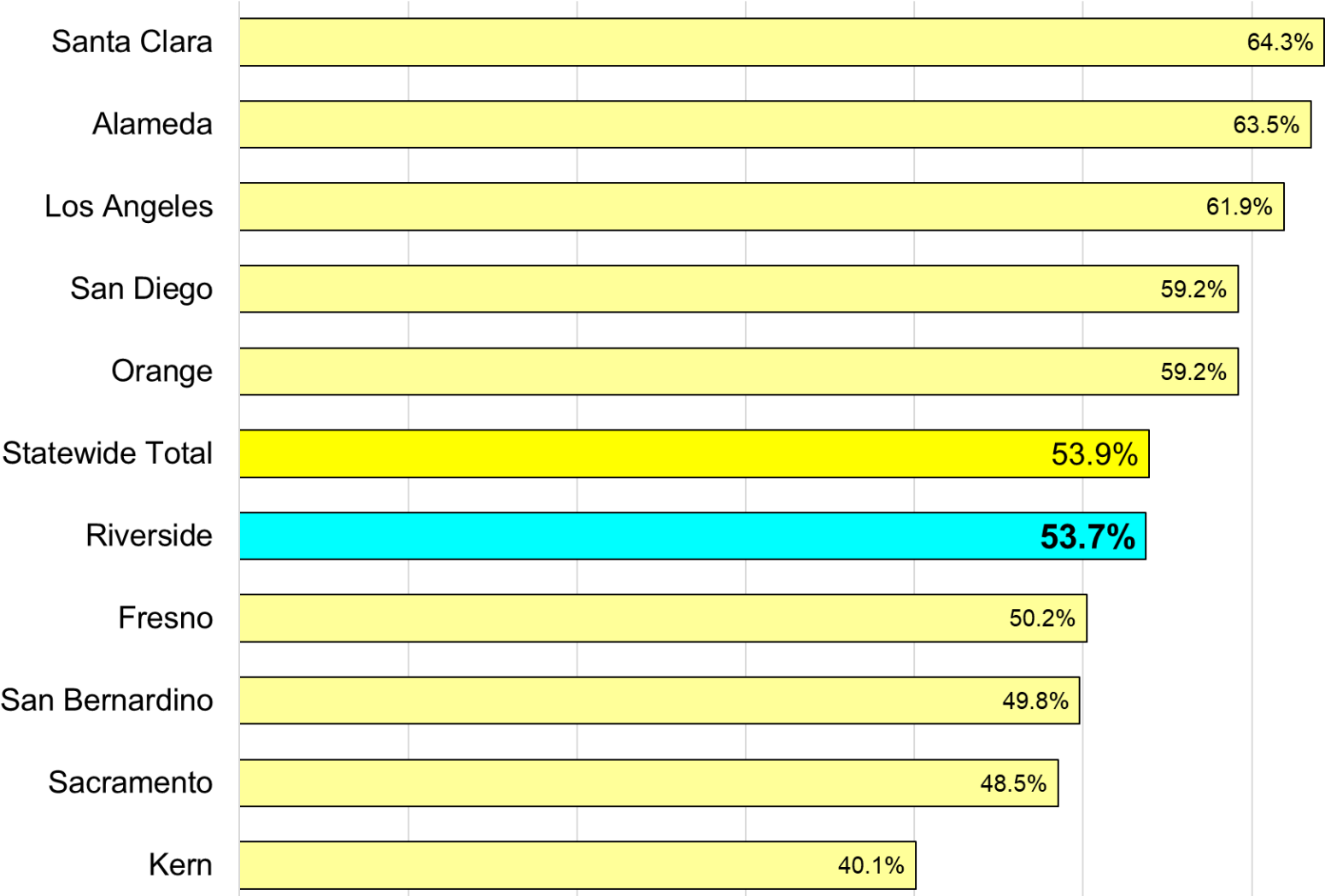
2010-2025 Cohort Dropout Rates

List of Districts in Riverside County

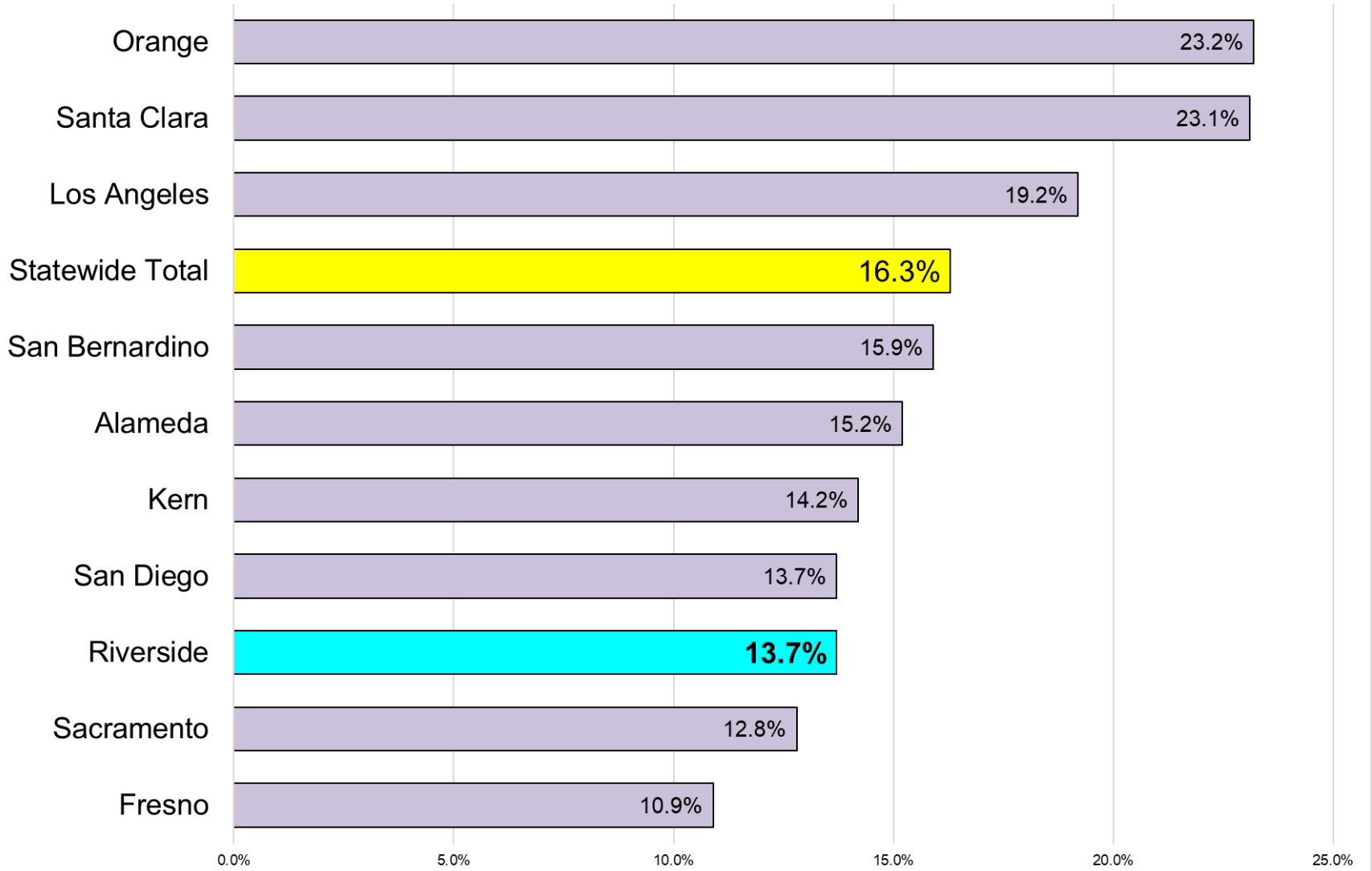
District	Number of 2025 Cohort Students	2010 Cohort Dropout Rate	2011 Cohort Dropout Rate	2012 Cohort Dropout Rate	2013 Cohort Dropout Rate	2014 Cohort Dropout Rate	2015 Cohort Dropout Rate	2016 Cohort Dropout Rate	2017 Cohort Dropout Rate*	2018 Cohort Dropout Rate*	2019 Cohort Dropout Rate*	2020 Cohort Dropout Rate*	2021 Cohort Dropout Rate*	2022 Cohort Dropout Rate*	2023 Cohort Dropout Rate*	2024 Cohort Dropout Rate*	2025 Cohort Dropout Rate*	2024-2025 Cohort Dropout Rate Change*	2010-2025 Cohort Dropout Rate Change*
Alvord Unified	1,270	15.2	15.5	11.2	10.0	8.5	7.5	5.9	4.7	5.2	4.7	5.8	4.2	3.9	3.8	4.5	3.4	-1.1	-11.8
Banning Unified	341	16.8	13.1	14.0	13.0	13.2	17.6	12.0	11.5	10.7	11.7	17.1	17.8	13.1	10.2	11.3	12.9	1.6	-3.9
Beaumont Unified	966	12.2	8.0	9.4	7.2	10.1	6.9	5.9	3.6	4.1	2.7	3.0	5.0	4.3	4.5	2.9	1.8	-1.1	-10.4
Coachella Valley Unified	1,223	22.3	22.7	19.6	14.2	16.3	11.8	10.2	7.8	9.2	8.7	12.3	15.3	7.2	12.5	9.0	6.2	-2.8	-16.1
Corona-Norco Unified	4,260	7.4	7.6	5.1	4.5	4.3	4.1	2.6	3.2	3.2	3.0	2.7	2.0	1.5	1.8	1.7	1.6	-0.1	-5.8
Desert Sands Unified	2,249	11.4	10.0	8.8	8.6	7.8	6.2	5.4	5.0	4.8	3.8	5.2	3.4	3.1	2.3	2.8	2.6	-0.2	-8.8
Hemet Unified	1,812	15.1	11.8	12.8	12.8	11.6	11.9	5.7	7.0	5.6	6.3	7.3	5.4	6.9	7.3	8.6	3.6	-5.0	-11.5
Jurupa Unified	1,465	16.5	12.8	11.6	12.1	11.7	6.5	4.5	4.0	4.8	5.0	4.4	5.4	5.0	3.0	2.5	3.5	1.0	-13.0
Lake Elsinore Unified	1,740	6.0	6.4	4.8	5.4	6.7	6.7	5.3	2.6	3.3	2.5	2.8	2.0	2.3	2.0	2.4	1.9	-0.5	-4.1
Moreno Valley Unified	2,491	21.9	20.0	16.9	11.9	11.3	7.5	7.2	6.0	6.2	4.2	5.5	5.5	4.7	5.4	4.2	4.0	-0.2	-17.9
Murrieta Valley Unified	1,888	11.2	7.1	5.5	3.7	4.4	5.1	3.3	0.3	0.9	0.7	0.5	1.2	1.1	1.2	0.3	0.5	0.2	-10.7
Palm Springs Unified	1,686	11.9	11.6	10.5	8.6	8.8	5.7	6.8	4.9	4.6	3.5	5.4	5.1	7.3	7.9	5.4	4.3	-1.1	-7.6
Palo Verde Unified	222	24.3	18.4	22.4	13.1	19.7	14.8	12.1	8.8	9.8	8.9	14.9	15.5	9.0	7.3	10.4	9.0	-1.4	-15.3
Perris Union High	2,487	15.8	12.6	11.8	11.8	12.4	9.7	5.5	5.0	6.6	5.8	5.2	6.3	5.5	6.5	4.3	5.9	1.6	-9.9
Riverside Unified	3,007	9.9	11.4	10.5	8.0	6.5	4.9	5.3	4.8	4.7	2.1	2.0	2.2	3.2	3.6	3.1	2.4	-0.7	-7.5
San Jacinto Unified	827	11.4	6.8	8.2	5.6	4.7	4.4	3.9	1.1	2.6	1.1	2.9	4.7	2.5	4.3	4.4	2.7	-1.7	-8.7
Temecula Valley Unified	2,371	4.3	4.2	3.3	2.7	3.2	2.8	2.3	2.1	2.6	2.2	2.3	2.0	1.8	2.1	2.3	1.3	-1.0	-3.0
Val Verde Unified	1,727	16.7	12.9	7.6	5.9	5.4	4.9	3.4	3.9	4.1	3.7	5.1	6.9	4.7	4.8	4.9	3.6	-1.3	-13.1
Riverside County	34,044	15.1	13.5	11.1	9.5	9.3	7.7	6.2	5.6	5.8	4.6	5.3	5.1	4.1	4.4	3.9	3.9	0.0	-11.2
State of CA	496,796	16.6	14.7	13.1	11.4	11.5	10.7	9.7	9.1	9.6	9.0	8.9	9.4	5.6	6.5	6.3	8.0	1.7	-8.6

*NEW Adjusted Cohort Graduation Rate (ACGR) Rate Rules Applied

2025 A-G Completion Rates 10 Largest Counties in CA



2025 State Seal of Biliteracy Rates 10 Largest Counties in CA

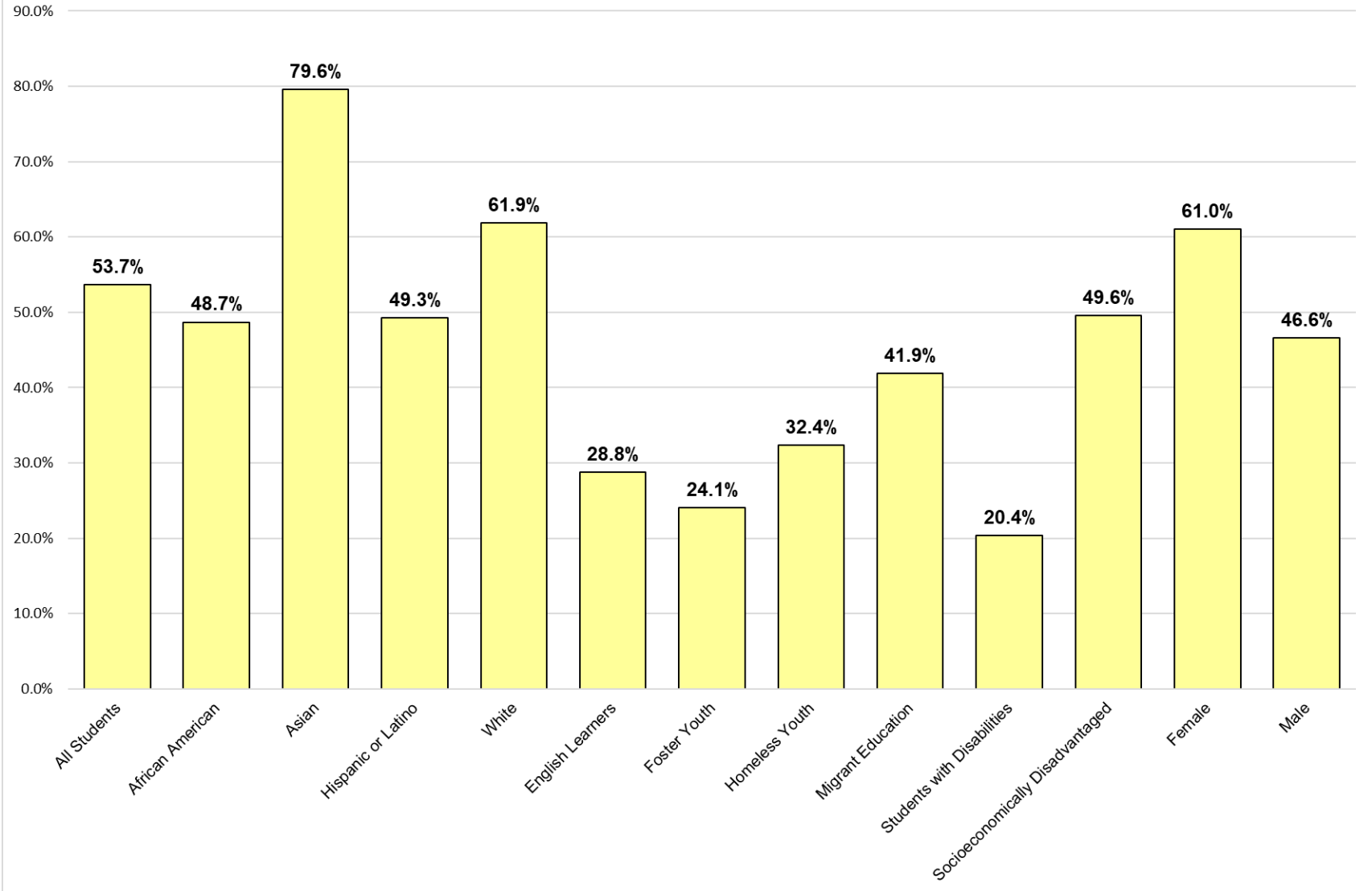


2017-2025 A-G Completion and State Seal of Biliteracy Rates

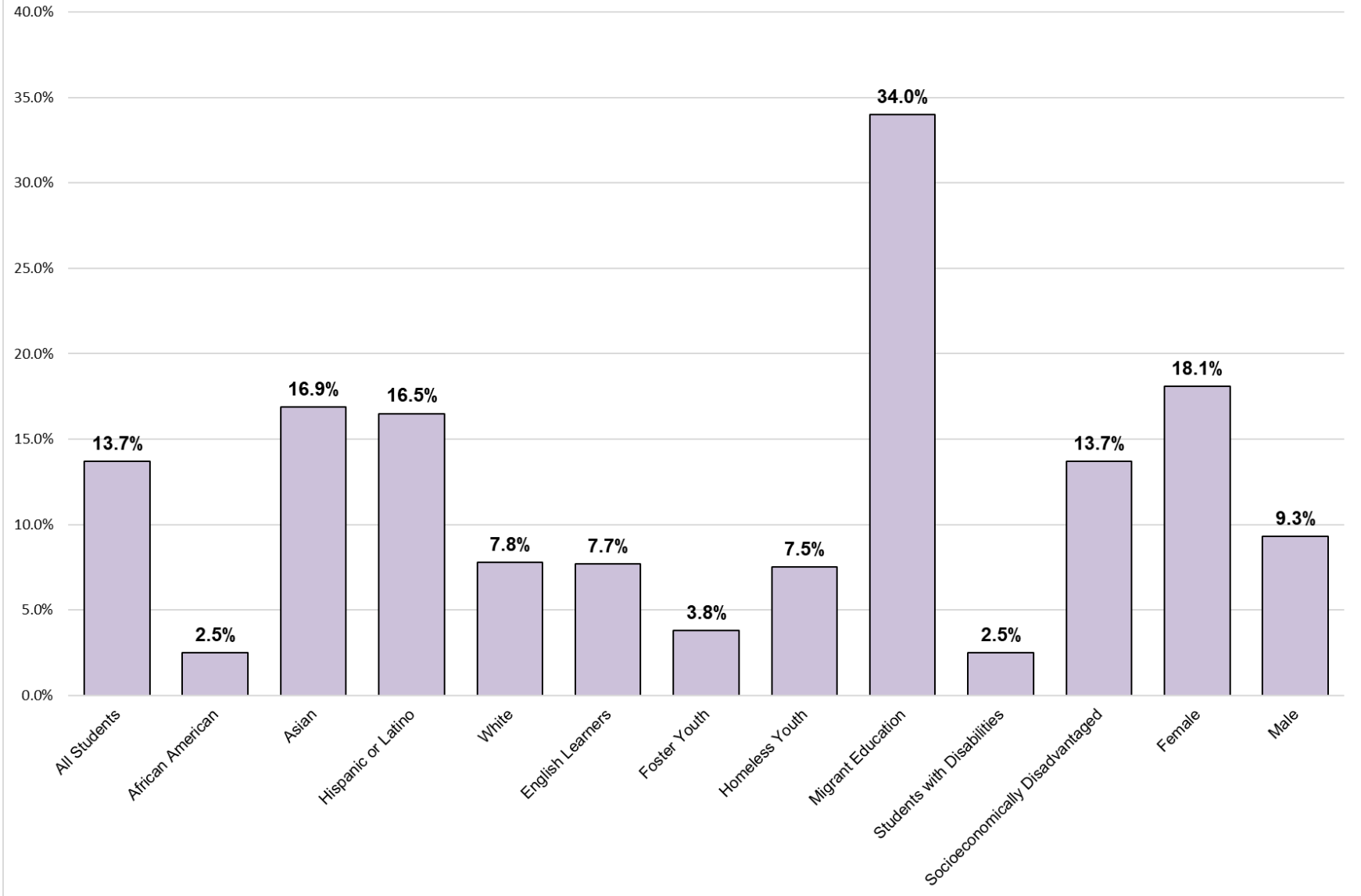
List of 10 Largest Counties in CA

County	Number of 2025 Cohort Graduates	2017 Cohort Graduates A-G Completion Rate	2018 Cohort Graduates A-G Completion Rate	2019 Cohort Graduates A-G Completion Rate	2020 Cohort Graduates A-G Completion Rate	2021 Cohort Graduates A-G Completion Rate	2022 Cohort Graduates A-G Completion Rate	2023 Cohort Graduates A-G Completion Rate	2024 Cohort Graduates A-G Completion Rate	2025 Cohort Graduates A-G Completion Rate	2025 Cohort Graduates A-G Completion Rate Ranking	2024-2025 Cohort Graduates A-G Completion Rate Change	2017-2025 Cohort Graduates A-G Completion Rate Change	2017 Cohort Graduates Biliteracy Rate	2018 Cohort Graduates Biliteracy Rate	2019 Cohort Graduates Biliteracy Rate	2020 Cohort Graduates Biliteracy Rate	2021 Cohort Graduates Biliteracy Rate	2022 Graduates Biliteracy Rate	2023 Graduates Biliteracy Rate	2024 Graduates Biliteracy Rate	2025 Graduates Biliteracy Rate	2025 Cohort Graduates Biliteracy Rate Ranking	2024-2025 Cohort Graduates Biliteracy Rate Change	2017-2025 Cohort Graduates Biliteracy Rate Change
Alameda	17,476	57.2	56.6	57.0	57.8	61.5	63.4	65.0	60.0	63.5	2	3.5	6.3	11.1	14.5	13.5	12.3	15.2	13.7	11.9	13.6	15.2	5	1.6	4.1
Fresno	16,569	47.2	46.3	46.5	48.2	47.6	45.0	47.0	47.0	50.2	7	3.2	3.0	7.6	8.6	8.6	9.5	5.3	8.5	7.9	10.3	10.9	10	0.6	3.3
Kern	14,999	36.9	36.9	38.0	40.1	38.3	36.7	36.2	36.9	40.1	10	3.2	3.2	1.6	9.0	9.1	9.8	11.6	8.7	9.1	12.8	14.2	6	1.4	12.6
Los Angeles	111,737	56.0	56.2	56.6	53.6	58.7	58.2	59.8	59.5	61.9	3	2.4	5.9	11.0	11.8	11.0	14.0	16.9	13.7	15.0	17.7	19.2	3	1.5	8.2
Orange	38,693	53.8	54.6	55.3	55.8	56.9	57.2	57.3	57.3	59.2	4	1.9	5.4	20.7	21.7	19.8	21.0	23.5	17.6	19.9	21.7	23.2	1	1.5	2.5
Riverside	34,044	47.9	47.7	50.4	50.9	50.0	47.8	50.0	49.7	53.7	6	4.0	5.8	8.6	6.9	9.9	9.0	11.2	8.3	8.5	11.4	13.7	7	2.3	5.1
Sacramento	25,724	44.6	46.6	44.9	47.8	47.6	46.1	48.5	47.9	48.5	9	0.6	3.9	10.7	10.8	10.8	11.6	14.7	9.3	10.5	12.0	12.8	9	0.8	2.1
San Bernardino	32,813	40.6	43.0	44.1	47.2	46.4	44.9	45.5	47.2	49.8	8	2.6	9.2	8.7	5.3	10.3	10.0	12.6	9.8	11.6	13.9	15.9	4	2.0	7.2
San Diego	40,691	58.1	58.0	58.5	58.9	58.9	57.6	59.2	59.5	59.2	4	-0.3	1.1	10.8	10.6	10.3	10.9	12.1	9.8	10.3	11.4	13.7	7	2.3	2.9
Santa Clara	20,618	59.1	59.0	56.5	64.2	66.2	64.8	64.9	63.0	64.3	1	1.3	5.2	16.1	17.7	19.5	21.5	23.8	17.9	18.7	22.3	23.1	2	0.8	7.0
State of CA	496,796	49.9	49.9	50.5	50.9	52.1	51.4	52.4	51.9	53.9		2.0	4.0	10.9	11.3	11.6	12.4	14.8	11.8	12.4	14.7	16.3		1.6	5.4

2025 Riverside County A-G Completion Rates Student Groups Comparison



2025 Riverside County State Seal of Biliteracy Rates Student Groups Comparison

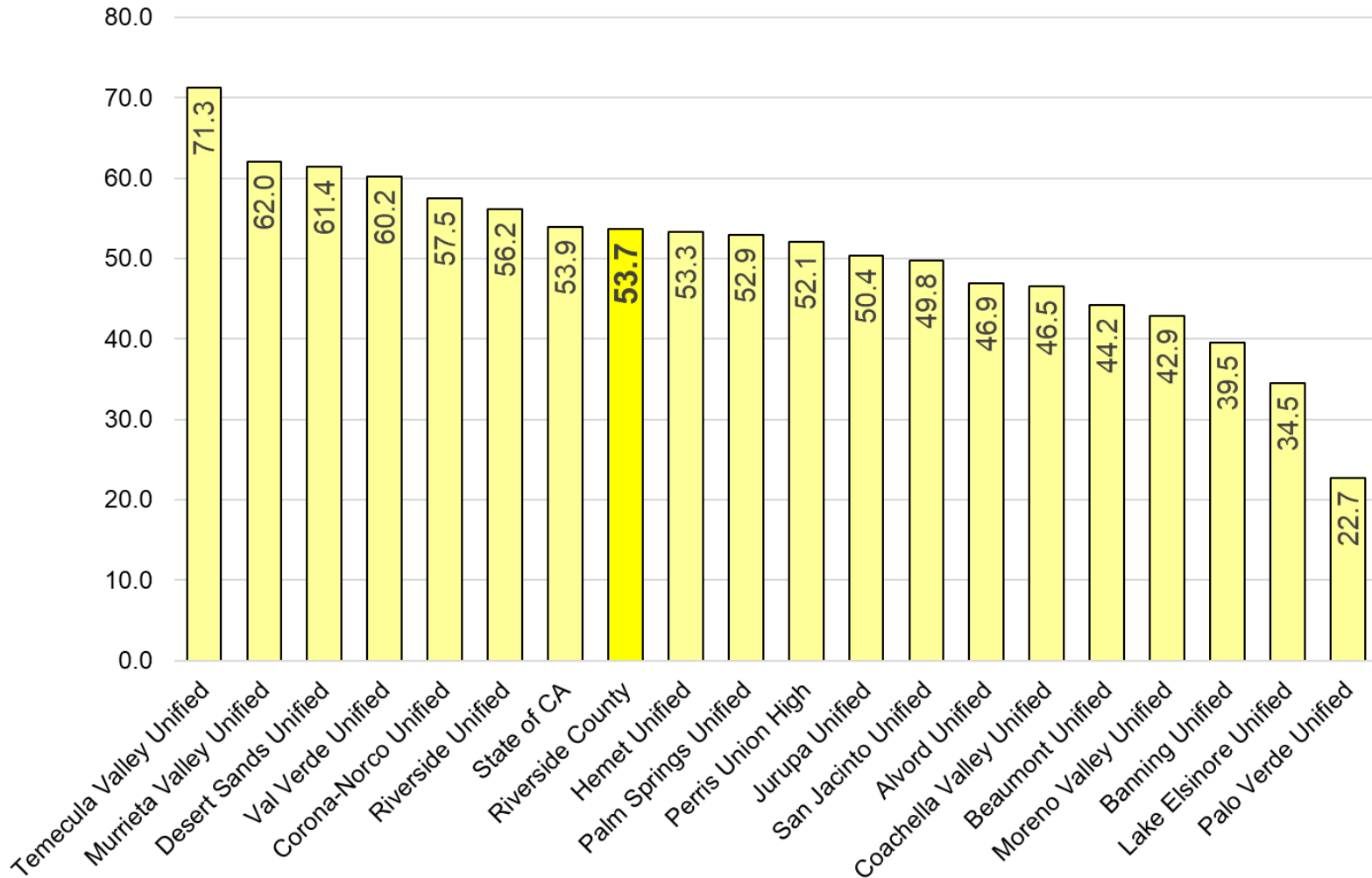


2017-2025 A-G Completion and State Seal of Biliteracy Rates

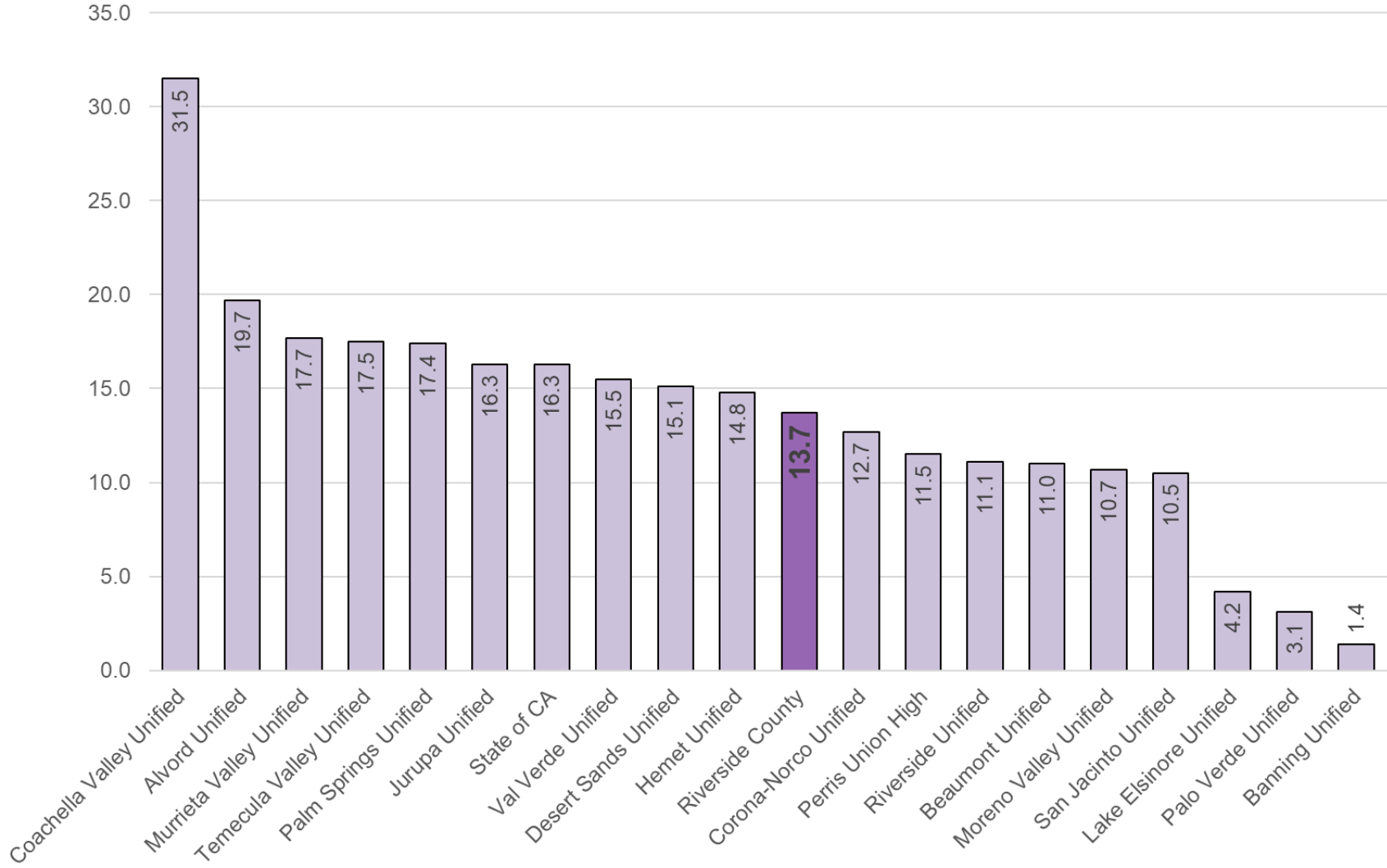
Riverside County Student Groups Comparison

Student Group	Number of 2025 Cohort Graduates	2017 Cohort Graduates A-G Completion Rate	2018 Cohort Graduates A-G Completion Rate	2019 Cohort Graduates A-G Completion Rate	2020 Cohort Graduates A-G Completion Rate	2021 Cohort Graduates A-G Completion Rate	2022 Cohort Graduates A-G Completion Rate	2023 Cohort Graduates A-G Completion Rate	2024 Cohort Graduates A-G Completion Rate	2025 Cohort Graduates A-G Completion Rate	2024-2025 Cohort Graduates A-G Completion Rate Change	2017-2025 Cohort Graduates A-G Completion Rate Change	2017 Cohort Graduates Biliteracy Rate	2018 Cohort Graduates Biliteracy Rate	2019 Cohort Graduates Biliteracy Rate	2020 Cohort Graduates Biliteracy Rate	2021 Cohort Graduates Biliteracy Rate	2022 Cohort Graduates Biliteracy Rate	2023 Cohort Graduates Biliteracy Rate	2024 Cohort Graduates Biliteracy Rate	2025 Cohort Graduates Biliteracy Rate	2024-2025 Cohort Graduates Biliteracy Rate Change	2017-2025 Cohort Graduates Biliteracy Rate Change
All Students	34,044	47.9	47.7	50.4	50.9	50.0	47.8	50.0	49.7	53.7	4.0	5.8	8.6	6.9	9.9	9.0	11.2	8.3	8.5	11.4	13.7	2.3	5.1
African American	1,980	41.5	43.2	45.7	45.5	44.5	43.4	43.3	45.6	48.7	3.1	7.2	2.0	1.4	2.2	2.0	3.2	2.1	1.9	2.7	2.5	-0.2	0.5
American Indian or Alaska Native	152	37.0	36.8	44.1	31.7	52.2	33.6	42.6	40.7	43.5	2.8	6.5	4.3	2.4	6.9	2.4	0.0	5.5	3.1	5.7	6.5	0.8	2.2
Asian	1,228	77.6	75.3	73.9	78.6	76.6	75.7	76.3	78.1	79.6	1.5	2.0	17.2	7.8	14.4	12.8	18.2	11.4	13.0	13.8	16.9	3.1	-0.3
Filipino	724	73.3	68.9	75.6	76.1	75.4	76.3	77.2	77.4	83.0	5.6	9.7	9.1	8.7	10.6	7.5	10.2	9.3	5.0	8.8	13.2	4.4	4.1
Hispanic or Latino	22,829	42.8	42.1	45.4	46.0	44.7	42.3	45.3	44.8	49.3	4.5	6.5	10.0	8.1	11.9	10.8	13.4	9.7	10.2	13.6	16.5	2.9	6.5
Pacific Islander	134	44.4	40.0	38.7	41.3	55.1	38.5	50.0	46.7	44.8	-1.9	0.4	2.4	1.8	2.5	0.8	3.7	2.6	3.6	1.1	1.6	0.5	-0.8
White	5,648	55.5	56.5	58.8	59.0	58.6	57.7	59.4	59.1	61.9	2.8	6.4	5.9	5.1	6.5	5.6	6.9	5.3	5.4	6.6	7.8	1.2	1.9
Two or More Races	1,162	54.9	59.5	61.5	58.6	59.9	57.5	57.2	60.0	63.8	3.8	8.9	8.4	7.3	8.4	8.2	6.7	6.6	4.1	8.5	7.1	-1.4	-1.3
No Ethnicity Reported	187	50.0	51.8	51.2	51.6	59.1	45.8	42.3	47.8	50.3	2.5	0.3	6.1	8.2	4.8	6.8	13.6	3.2	6.9	7.0	7.4	0.4	1.3
English Learners	5,364	18.0	19.6	20.9	23.4	20.8	20.5	22.8	23.7	28.8	5.1	10.8	2.6	2.5	3.4	2.8	6.2	3.8	2.8	6.1	7.7	1.6	5.1
Foster Youth	422	15.5	14.9	19.2	21.0	15.9	12.5	19.2	19.5	24.1	4.6	8.6	1.6	1.4	2.0	1.1	2.1	2.4	1.4	1.4	3.8	2.4	2.2
Homeless Youth	2,522	31.2	27.9	33.2	32.5	31.2	30.0	29.6	29.7	32.4	2.7	1.2	4.6	4.1	5.7	5.0	7.0	5.7	4.7	6.2	7.5	1.3	2.9
Migrant Education	240	39.7	37.0	31.8	40.8	38.9	26.9	38.2	38.0	41.9	3.9	2.2	19.0	13.4	17.1	11.7	19.2	8.1	9.7	27.7	34.0	6.3	15.0
Students with Disabilities	4,980	12.3	14.5	13.6	14.8	13.4	14.1	15.7	16.2	20.4	4.2	8.1	0.6	0.5	0.8	0.9	1.6	0.9	0.7	1.9	2.5	0.6	1.9
Socioeconomically Disadvantaged	28,382	40.6	40.8	43.6	44.0	42.8	41.5	44.9	45.3	49.6	4.3	9.0	8.2	6.7	9.9	9.0	11.2	8.4	8.4	11.3	13.7	2.4	5.5
Female	16,548	55.4	55.0	58.6	58.8	57.2	55.0	57.0	56.4	61.0	4.6	5.6	11.3	9.0	13.6	11.8	15.0	11.0	11.4	15.1	18.1	3.0	6.8
Male	17,453	40.1	40.3	42.0	42.8	42.8	40.6	43.0	43.1	46.6	3.5	6.5	5.8	4.9	6.1	6.1	7.4	5.6	5.7	7.6	9.3	1.7	3.5

Districts in Riverside County 2025 A-G Completion Rates



Districts in Riverside County 2025 State Seal of Biliteracy Rates



2017-2025 A-G Completion and State Seal of Biliteracy Rates

List of Districts in Riverside County

District	Number of 2025 Cohort Graduates	2017 Cohort Graduates A-G Completion Rate	2018 Cohort Graduates A-G Completion Rate	2019 Cohort Graduates A-G Completion Rate	2020 Cohort Graduates A-G Completion Rate	2021 Cohort Graduates A-G Completion Rate	2022 Cohort Graduates A-G Completion Rate	2023 Cohort Graduates A-G Completion Rate	2024 Cohort Graduates A-G Completion Rate	2025 Cohort Graduates A-G Completion Rate	2024-2025 Cohort Graduates A-G Completion Rate Change	2017-2025 Cohort Graduates A-G Completion Rate Change	2017 Cohort Graduates Biliteracy Rate	2018 Cohort Graduates Biliteracy Rate	2019 Cohort Graduates Biliteracy Rate	2020 Cohort Graduates Biliteracy Rate	2021 Cohort Graduates Biliteracy Rate	2022 Cohort Graduates Biliteracy Rate	2023 Cohort Graduates Biliteracy Rate	2024 Cohort Graduates Biliteracy Rate	2025 Cohort Graduates Biliteracy Rate	2024-2025 Cohort Graduates Biliteracy Rate Change	2017-2025 Cohort Graduates Biliteracy Rate Change
Alvord Unified	1,270	39.7	41.1	37.0	43.2	39.6	39.5	46.6	45.6	46.9	1.3	7.2	7.9	8.3	6.1	7.9	8.7	5.7	6.9	16.4	19.7	3.3	11.8
Banning Unified	341	41.1	25.6	41.9	30.1	39.3	28.6	35.8	32.9	39.5	6.6	-1.6	5.1	0.0	10.8	7.1	5.8	7.3	5.9	0.4	1.4	1.0	-3.7
Beaumont Unified	966	50.1	49.4	49.9	47.0	52.5	37.8	49.4	43.4	44.2	0.8	-5.9	6.9	6.1	3.9	6.2	0.0	4.5	7.2	9.6	11.0	1.4	4.1
Coachella Valley Unified	1,223	35.2	39.5	35.4	44.5	36.9	30.0	40.6	37.8	46.5	8.7	11.3	12.3	10.6	12.8	8.6	13.5	6.0	12.7	29.7	31.5	1.8	19.2
Corona-Norco Unified	4,260	53.3	51.2	57.3	57.0	52.9	55.4	54.6	54.0	57.5	3.5	4.2	8.4	0.0	9.6	8.4	9.5	9.4	7.9	9.0	12.7	3.7	4.3
Desert Sands Unified	2,249	50.6	51.4	51.8	58.2	53.4	51.3	54.7	56.1	61.4	5.3	10.8	14.9	15.3	15.8	15.2	18.0	11.6	12.0	12.4	15.1	2.7	0.2
Hemet Unified	1,812	42.3	43.3	48.6	55.0	48.8	46.2	47.0	48.7	53.3	4.6	11.0	3.9	4.6	8.2	6.4	7.5	7.6	9.4	11.0	14.8	3.8	10.9
Jurupa Unified	1,465	36.0	38.3	39.9	38.3	35.0	37.1	41.2	44.3	50.4	6.1	14.4	6.2	8.5	5.8	12.2	11.0	8.5	6.6	10.8	16.3	5.5	10.1
Lake Elsinore Unified	1,740	37.1	39.6	40.0	43.0	38.4	33.4	33.0	32.6	34.5	1.9	-2.6	8.2	6.8	9.2	9.0	6.6	9.4	8.4	7.6	4.2	-3.4	-4.0
Moreno Valley Unified	2,491	38.6	33.3	41.9	42.9	40.4	37.8	37.2	37.8	42.9	5.1	4.3	2.4	3.9	6.1	6.2	5.0	5.9	5.7	7.5	10.7	3.2	8.3
Murrieta Valley Unified	1,888	59.2	63.1	62.5	65.1	63.4	62.6	59.0	61.5	62.0	0.5	2.8	11.2	11.3	11.1	4.8	15.5	6.0	8.6	15.1	17.7	2.6	6.5
Palm Springs Unified	1,686	39.9	40.0	45.2	42.9	49.9	45.4	47.5	47.5	52.9	5.4	13.0	8.0	0.9	13.1	0.3*	22.7	15.3	13.8	14.3	17.4	3.1	9.4
Palo Verde Unified	222	24.4	0.5	22.8	22.8	25.4	27.8	31.3	27.0	22.7	-4.3	-1.7	0.0	0.0	2.5	0.8	4.7	2.1	0.0	0.0	3.1	3.1	3.1
Perris Union High	2,487	36.3	39.1	38.3	37.5	37.5	30.9	41.6	39.6	52.1	12.5	15.8	6.4	8.6	9.1	10.4	8.2	10.0	5.0	8.9	11.5	2.6	5.1
Riverside Unified	3,007	51.9	51.1	52.6	51.9	53.7	52.3	54.7	55.1	56.2	1.1	4.3	9.6	8.7	9.3	11.0	12.3	3.2	10.6	13.0	11.1	-1.9	1.5
San Jacinto Unified	827	39.2	39.3	43.1	43.1	46.8	37.8	39.9	39.6	49.8	10.2	10.6	8.5	6.2	12.1	5.9	11.6	6.5	6.9	10.9	10.5	-0.4	2.0
Temecula Valley Unified	2,371	74.5	76.6	74.6	74.9	80.1	71.0	71.5	71.5	71.3	-0.2	-3.2	15.0	17.7	17.1	17.3	18.8	12.9	12.2	13.6	17.5	3.9	2.5
Val Verde Unified	1,727	53.5	53.8	62.7	60.9	55.9	59.2	59.4	58.7	60.2	1.5	6.7	7.2	0.1	8.7	11.1	11.3	11.0	7.7	9.3	15.5	6.2	8.3
Riverside County	34,044	47.9	47.7	50.4	50.9	50.0	47.6	49.9	49.7	53.7	4.0	5.8	8.6	6.9	9.9	9.0	11.2	8.4	8.8	11.4	13.7	2.3	5.1
State of CA	496,796	49.9	49.9	50.5	50.9	52.1	51.1	51.8	51.9	53.9	2.0	4.0	10.9	11.3	11.6	12.4	14.8	12.3	12.8	14.7	16.3	1.6	5.4