



# RIVERSIDE COUNTY OFFICE OF EDUCATION

## 2025 CAASPP REPORT

English Language Arts, Mathematics, and Science

OCTOBER 2025

*Every student in Riverside County will graduate from high school academically and socially prepared for college, the workforce, and civic responsibility.*



## California Assessment of Student Performance and Progress (CAASPP)

The Riverside County Office of Education (RCOE) focuses on supporting students, schools, and districts in achieving the RCOE pledge: **Every student in Riverside County will graduate from high school academically and socially prepared for college, the workforce, and civic responsibility.**

### Table of Contents

- Introduction
- Section 1: Riverside Countywide English Language Arts, Mathematics, and Science Results by Grade Level and Achievement Level
- Section 2: Riverside Countywide English Language Arts, Mathematics, and Science Results, 2015 - 2025 Comparison by Grade Level and Achievement Level
- Section 3: Riverside Countywide English Language Arts, Mathematics, and Science Results, Comparison by Student Group
- Section 4: Riverside Countywide English Language Arts and Mathematics Results, Comparison by Cohort and Achievement Level
- Section 5: List of Districts in Riverside County 2025 English Language Arts, Mathematics, and Science Results
- Section 6: Comparison to 10 Largest Counties 2025 English Language Arts, Mathematics, and Science Results

## Introduction

The CAASPP System was established on January 1, 2014. The primary purpose of the CAASPP System is to assist teachers, administrators, students, and parents by promoting high-quality teaching and learning through the use of a variety of assessment approaches and item types. The CAASPP System encompasses the following assessments and student participation requirements.

- Smarter Balanced English language arts/literacy (ELA) and mathematics summative assessments in grades three through eight and eleven.
- CA Science Test in grades five and eight and once in high school (i.e., grade ten, eleven, or twelve).
- California Alternate Assessments (CAAs) for ELA, mathematics, and science.
- CA Spanish Assessment (CSA) for reading/language arts in grades three through eight and high school (optional).

Over a decade ago, California adopted more rigorous academic standards that emphasize not only subject knowledge, but also the critical thinking, analytical writing, and problem-solving skills students need to be successful in college and career. These standards set a higher bar for California students to help ensure they are prepared to succeed in the future. Because what students need to know and be able to do has changed, our tests must change as well. California's new assessment system represents the next step in a comprehensive plan to promote high-quality teaching and learning and improve student outcomes. This plan recognizes that assessments can play an important role in promoting and modeling high-quality instruction. The Smarter Balanced assessments are computer-based tests that measure student knowledge of California's ELA/literacy and mathematics standards. These assessments replace the former paper-based, multiple-choice assessments for students in grades three through eight and grade eleven. The first statewide administration of these assessments took place in spring 2015. This report includes results from seven administrations of the Smarter Balanced assessments in ELA and mathematics beginning in 2015 through 2025 with no results reported in 2020 and 2021. Testing was suspended in 2020 due to the COVID-19 pandemic resulting in school closures in spring 2020 through most of the 2020-2021 school year. In spring 2021, districts were given the option to administer the Smarter Balanced assessments or utilize local assessments that met specific criteria adopted by the CA State Board of Education. In spring 2022, school districts were required to administer the Smarter Balanced assessments for the first time since 2019.

The Smarter Balanced assessment system uses both computer-based and computer-adaptive tests, providing students with a wider range of questions tailored to more accurately identify the knowledge and skills individual students have mastered. The tests include performance tasks that challenge students to demonstrate critical thinking and problem-solving, and to apply their knowledge and skills to real-world problems. The new computer-based tests include supports for English learners and students with special needs, allowing these students the ability to effectively demonstrate their knowledge and skills. The tests measure standards that our K–12 and higher education systems all agree address appropriate expectations for the preparation of high school graduates who are ready for success.

The California Science Test (CAST) is an online assessment based on the California Next Generation Science Standards (CA NGSS). The CAST is administered in grades five and eight and once to each student while that student is in high school. All students must take the CAST by the end of grade twelve, but have the option of testing in grade ten or grade eleven. Only eligible students may participate in the administration of the CAST. Students assigned to take an alternate assessment should take the California Alternate Assessment for Science.

(Source: [CDE CAASPP System](#), [CAASPP Description](#), [CA Testing Overview](#), [CAST Information](#))

## Section 1: Riverside Countywide 2025 English Language Arts, Mathematics, and Science Results by Grade Level & Achievement Level

On the Smarter Balanced Summative Assessment, individual students receive a scale score for English language arts (ELA)/literacy and mathematics. A scale score is the student's overall numerical score. These scores fall on a continuous scale from approximately 2000 to 3000 that increases across grade levels. Scale scores can be used to illustrate students' current level of achievement and their growth over time. When combined together across a student population, scale scores can also describe school and district-level changes in performance, as well as reveal gaps in achievement among different groups of students. In 2020-2021 the Smarter Balanced Assessments and Test Blueprints were revised to create a "short-form" version of the test that was able to be administered remotely in distance-learning settings. The short-form version and remote administration options were available for optional spring 2021 test administration and were used for spring 2022 test administration and beyond. (Source: [Smarter Balanced Assessment Consortium](#), [Federal Approval for Assessment Flexibility Announcement](#)).

Based on their scale scores, students fall into one of four categories of performance called achievement levels. Overall scores are reported within one of four achievement levels: (Source: [CAASPP Starting Smarter](#), [CAASPP Student Score Reports](#)):

- Standard Exceeded (Level 4)
- Standard Met (Level 3)
- Standard Nearly Met (Level 2)
- Standard Not Met (Level 1)

According to the Smarter Balanced Assessment Consortium, students performing at Level 3 (*standard met*) and Level 4 (*standard exceeded*) are considered on track to demonstrating the knowledge and skills necessary for college and career readiness. (Source: [Smarter Balanced Assessment Consortium](#). According to the California State University (CSU) system, students that achieve *standard met* are *conditionally ready* for college while students that achieve *standard exceeded* are *college ready*.

- Standard Exceeded – College Ready
- Standard Met – Conditionally College Ready
- Standard Nearly Met - Not Yet Ready
- Standard Not Met – Not Ready

Riverside Countywide holds high standards for all students in order to ensure students' success in future coursework and careers. In striving for all students to achieve *standard exceeded* on Smarter Balanced ELA/literacy and mathematics assessments, it is more likely that students will demonstrate the knowledge and skills needed for likely success in entry-level, credit-bearing college coursework after high school (Source: [CDE Early Assessment Program](#)).

Many students may need to make significant progress to reach the standards set for ELA/literacy and mathematics that indicate college and career readiness. No student, parent, or teacher should be discouraged by scores, which will not be used to determine whether a student moves on to the next grade. Rather, the results can help guide discussions among parents and teachers, as well as help teachers and schools adjust instruction to meet students needs.

### 2025 Smarter Balanced Assessment Results Riverside Countywide English Language Arts by Grade

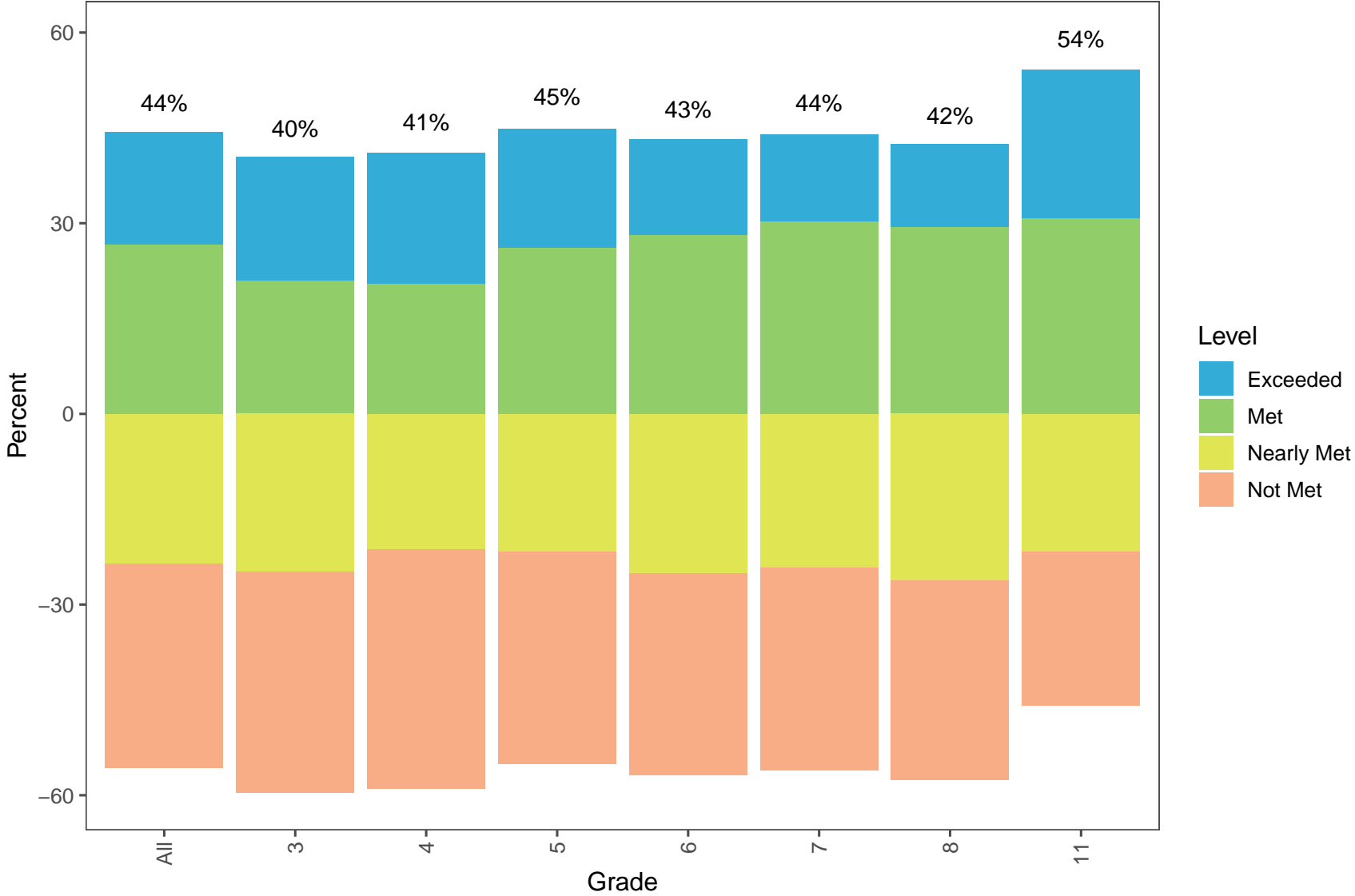


Table 1: Riverside Countywide English Language Arts by Grade

Grade	n	% Exceeded	% Met	% Nearly Met	% Not Met
All	217731	17.70	26.62	23.57	32.11
3	30195	19.51	20.92	24.80	34.78
4	30627	20.60	20.47	21.24	37.69
5	31240	18.78	26.10	21.75	33.37
6	31232	15.10	28.07	25.11	31.72
7	30957	13.66	30.26	24.13	31.94
8	31881	13.10	29.32	26.20	31.39
11	31599	23.28	30.79	21.72	24.21

### 2025 Smarter Balanced Assessment Results Riverside Countywide Mathematics by Grade

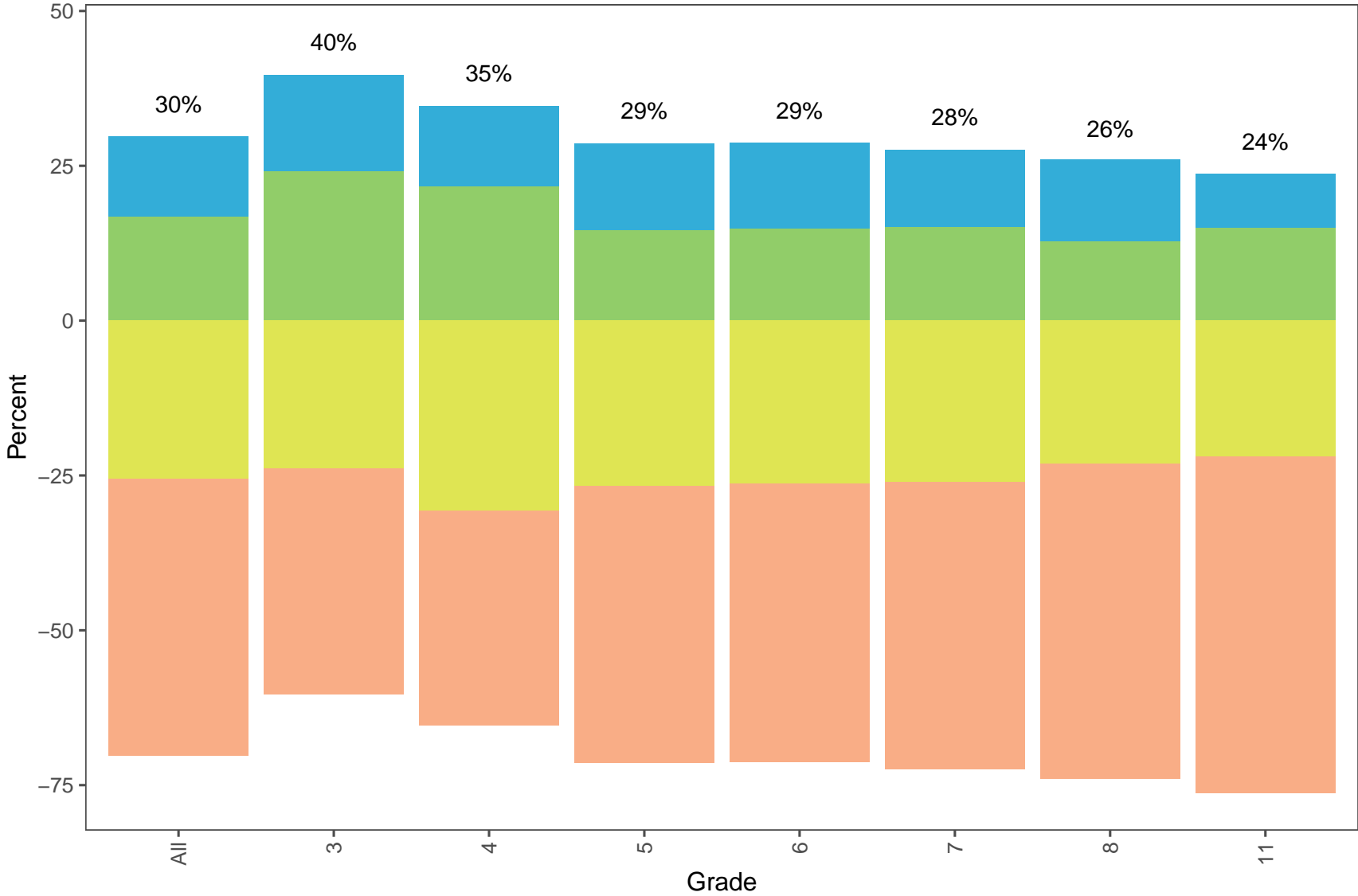


Table 2: Riverside Countywide Mathematics by Grade

Grade	n	% Exceeded	% Met	% Nearly Met	% Not Met
All	218194	12.96	16.82	25.49	44.73
3	30305	15.49	24.15	23.86	36.50
4	30745	13.04	21.65	30.63	34.68
5	31351	14.05	14.56	26.68	44.71
6	31297	13.90	14.83	26.32	44.96
7	31014	12.42	15.14	26.07	46.37
8	31923	13.22	12.81	23.10	50.88
11	31559	8.74	15.00	21.90	54.36

### 2025 Smarter Balanced Assessment Results Riverside Countywide Science by Grade

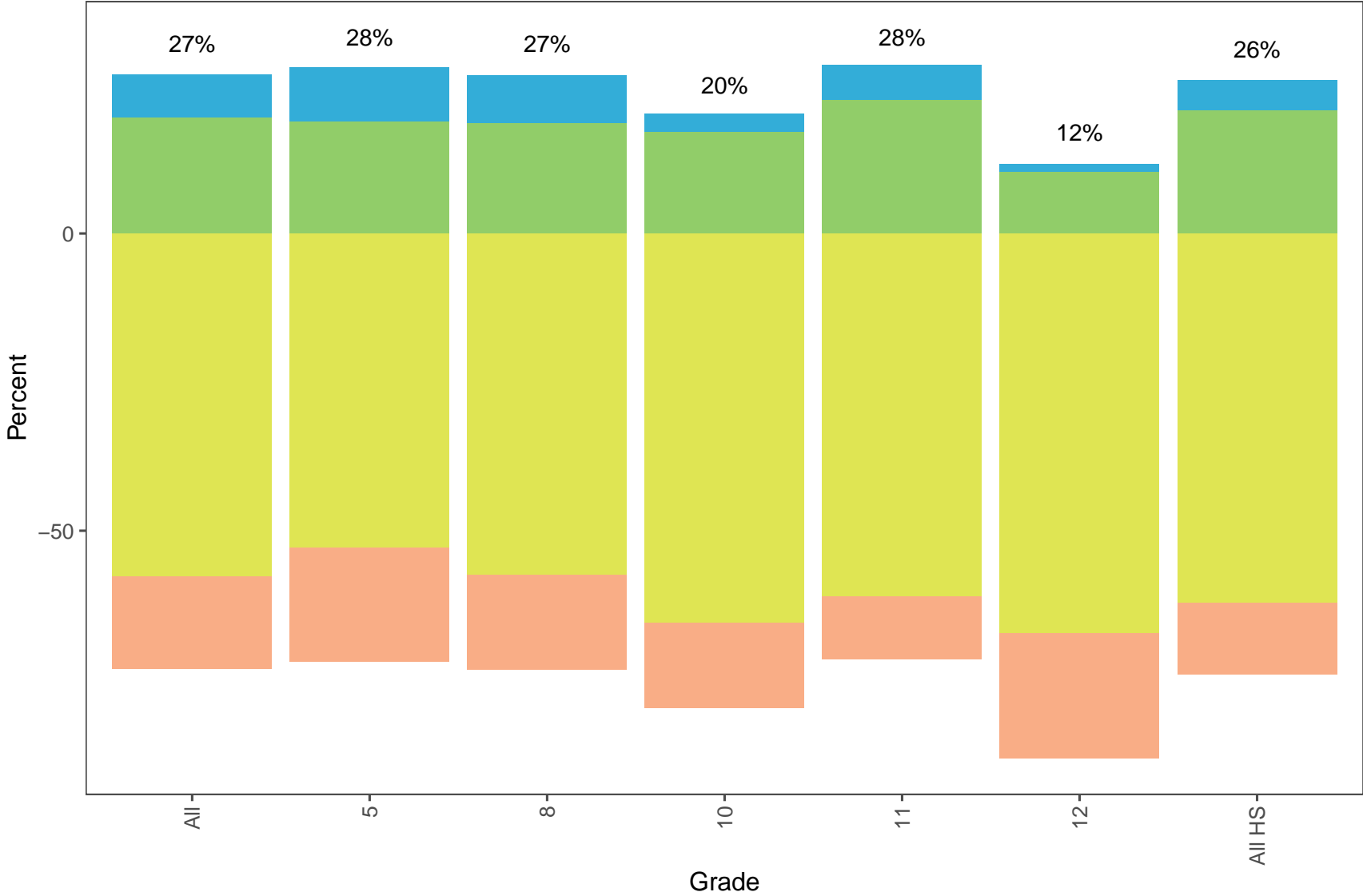


Table 3: Riverside Countywide Science by Grade

Grade	n	% Exceeded	% Met	% Nearly Met	% Not Met
All	99389	7.39	19.39	57.67	15.55
5	31368	9.09	18.84	52.90	19.17
8	31990	8.15	18.52	57.36	15.97
10	2687	3.16	17.05	65.50	14.29
11	29383	5.95	22.35	61.09	10.61
12	3961	1.39	10.28	67.31	21.03
All HS	36031	5.24	20.62	62.10	12.03

### 2025 Smarter Balanced Assessment Results Riverside Countywide English Language Arts vs. Mathematics by Year

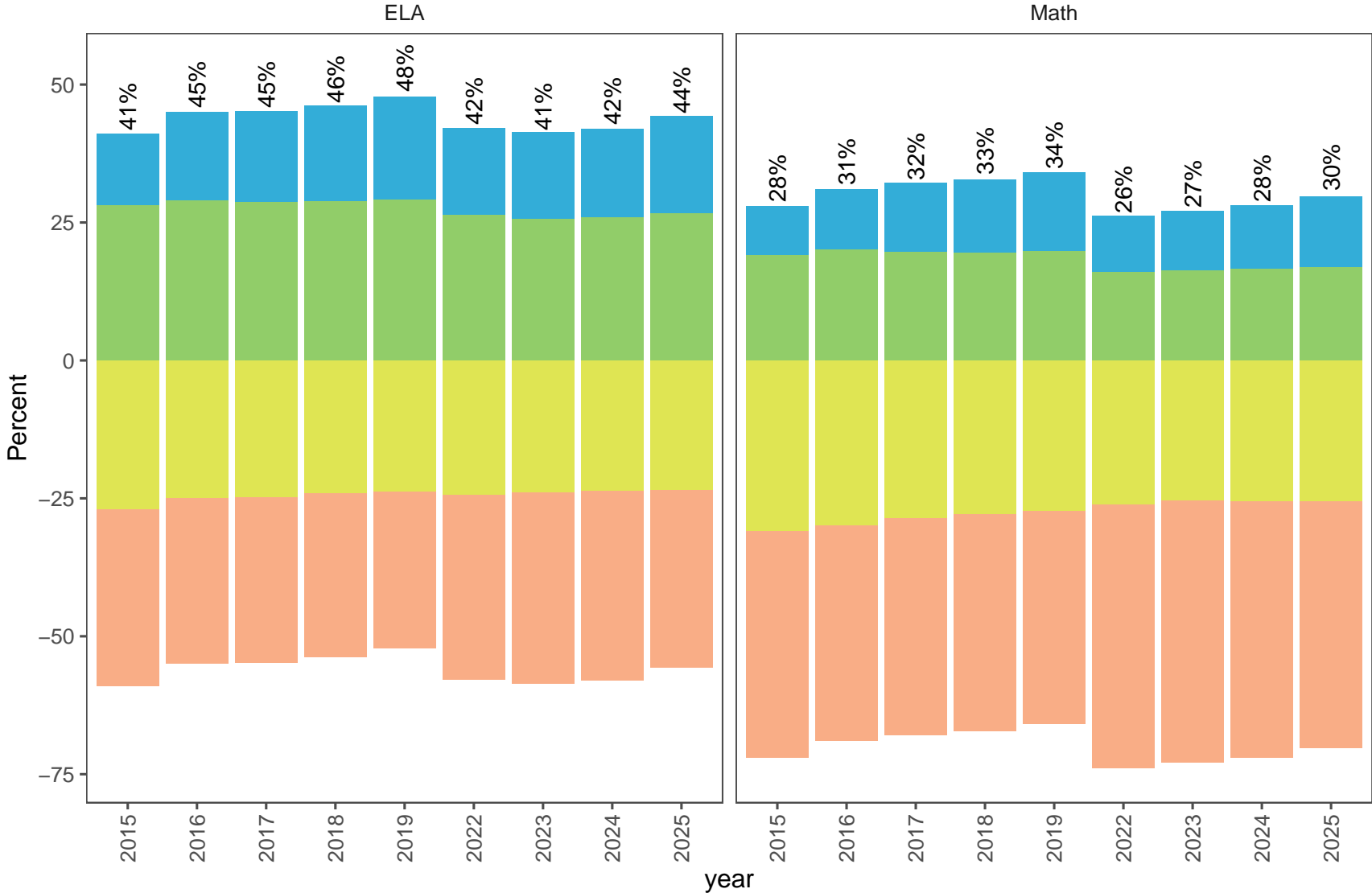


Table 4: Riverside Countywide English Language Arts by Year

year	n	% Exceeded	% Met	% Nearly Met	% Not Met
2015	223187	13.00	28.00	27.00	32.00
2016	224420	16.00	29.00	25.00	30.00
2017	225930	16.45	28.70	24.81	30.04
2018	224660	17.44	28.74	24.14	29.69
2019	223421	18.76	29.09	23.74	28.41
2022	216743	15.82	26.35	24.41	33.41
2023	218447	15.82	25.54	24.02	34.61
2024	217672	16.17	25.84	23.61	34.38
2025	217731	17.70	26.62	23.57	32.11

Table 5: Riverside Countywide Mathematics by Year

year	n	% Exceeded	% Met	% Nearly Met	% Not Met
2015	223607	9.00	19.00	31.00	41.00
2016	224804	11.00	20.00	30.00	39.00
2017	226526	12.45	19.68	28.54	39.32
2018	224919	13.32	19.43	27.90	39.35
2019	223768	14.42	19.72	27.33	38.53
2022	216846	10.11	16.02	26.13	47.74
2023	218761	10.90	16.20	25.43	47.47
2024	218634	11.53	16.55	25.50	46.42
2025	218194	12.96	16.82	25.49	44.73

**Section 2: Riverside Countywide English Language Arts, Mathematics, and Science Results, 2015 - 2025 Comparison by Grade Level and Achievement Level**

Achievement Level Descriptors (ALDs) are commonly used in K–12 statewide assessments to explain the knowledge, skills, and processes that students display at predetermined levels of achievement. ALDs are often found on student-level score reports or on state aggregate reports so that stakeholders, such as parents and teachers, can understand the types of knowledge, skills, and processes that students have demonstrated on an assessment. ALDs for English language arts (ELA)/literacy and mathematics are included below. (Source: [CDE Summative Assessments](#))

Grade Span	Standard Exceeded: Level 4 College Ready	Standard Met: Level 3 Conditionally College Ready	Standard Nearly Met: Level 2 Not Yet College Ready	Standard Not Met: Level 1 Not College Ready
Grades 3-8	The student has <b>exceeded</b> the achievement standard and demonstrates advanced progress toward mastery of the knowledge and skills needed for likely success in future coursework.	The student has <b>met</b> the achievement standard and demonstrates progress toward mastery of the knowledge and skills needed for likely success in future coursework.	The student has <b>nearly met</b> the achievement standard and may require further development to demonstrate the knowledge and skills needed for likely success in future coursework.	The student has <b>not met</b> the achievement standard and needs substantial improvement to demonstrate the knowledge and skills needed for likely success in future coursework.
Grade 11	The student has <b>exceeded</b> the achievement standard and demonstrates the knowledge and skills needed for likely success in entry-level, credit-bearing college coursework after high school.	The student has <b>met</b> the achievement standard and demonstrates progress toward mastery of the knowledge and skills needed for likely success in entry-level, credit-bearing college coursework after completing high school.	The student has <b>nearly met</b> the achievement standard and may require further development to demonstrate the knowledge and skills needed for likely success in entry-level, credit-bearing college coursework after high school.	The student has <b>not met</b> the achievement standard and needs substantial improvement to demonstrate the knowledge and skills needed for likely success in entry-level, credit-bearing college coursework after high school.
	Early Assessment Program (EAP) Status: Ready for college-level coursework.	EAP Status: Conditionally ready for college-level coursework.	EAP Status: Not yet demonstrating readiness for college-level coursework.	EAP Status: Not demonstrating readiness for college-level coursework.

Each of the four achievement levels contains a range of scale scores for each grade level. This means there are a range of student needs within each achievement level. The achievement levels take into account the level of difficulty of the test questions. Because the test is computer adaptive, students who consistently answer correctly will be steered toward items at the higher end of the continuum, allowing for the opportunity to achieve at the Standard Exceeded level. Those who consistently answer incorrectly will be steered toward the lower end, possibly resulting in the Standard Not Met level.

It should be noted that student scores are also reported in achievement levels for **Areas** or **Claims** within the overall ELA/literacy and mathematics assessments. The ELA/literacy claims include **reading, writing, listening, and research/inquiry**. In mathematics, there are three reported claims including **concepts and procedures, problem solving/modeling and data analysis, and communicating reasoning**. Claims are reported using the achievement level descriptors **Above Standard, Near Standard, or Below Standard**. Claim reports are not included in this CAASPP report but are reported for any group of 30 or more students on the public CAASPP reporting website.

The California Science Test (CAST) Scale Score ranges from 150 to 250 in grade five, 350 to 450 in grade eight, and 550 to 650 in high school (Source: [CAST Scale Score Ranges](#)). Based on their scale scores, students fall into one of four categories of performance called achievement levels. Overall scores are reported within four achievement levels.

**CAST Overall Reporting Achievement Level Descriptors**

<b>Grades</b>	<b>Standard Exceeded</b>	<b>Standard Met</b>	<b>Standard Nearly Met</b>	<b>Standard Not Met</b>
5 and 8 and high school (i.e., 10, 11, or 12)	The student at this level demonstrates a <b>thorough understanding of and ability to apply</b> the knowledge and skills associated with the performance expectations of the California Next Generation Science Standards.	The student at this level demonstrates an <b>adequate understanding of and ability to apply</b> the knowledge and skills associated with the performance expectations of the California Next Generation Science Standards.	The student at this level demonstrates a <b>partial understanding of and ability to apply</b> the knowledge and skills associated with the performance expectations of the California Next Generation Science Standards.	The student at this level demonstrates a <b>minimal understanding of and ability to apply</b> the knowledge and skills associated with the performance expectations of the California Next Generation Science Standards.

(Source: [CAST Reporting Level Descriptors](#))

Similar to claim scores for ELA and mathematics, CAST Science Domain-Specific ALDs are reported for the areas of **Life Sciences**, **Physical Sciences**, and **Earth and Space Sciences**. Domain-specific reports are not included in this CAASPP report but are reported for any group of 30 or more students on the public CAASPP reporting website.

## 2025 Smarter Balanced Assessment Results

### Riverside Countywide Grade Comparison by Year: English Language Arts

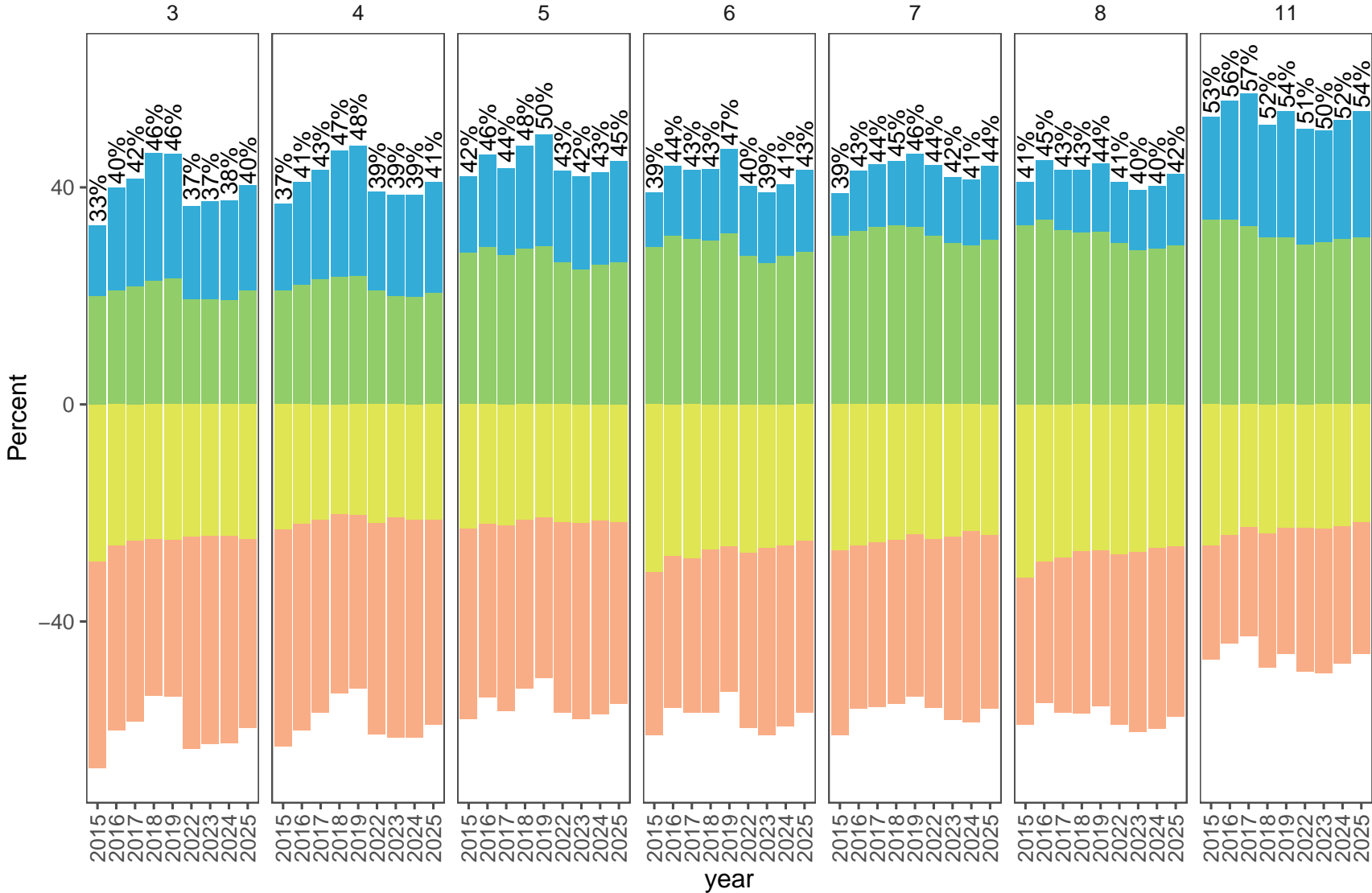


Table 8: Riverside Countywide English Language Arts by Grade by Year

Grade	year	n	% Exceeded	% Met	% Nearly Met	% Not Met
3	2015	32782	13.00	20.00	29.00	38.00
3	2016	31617	19.00	21.00	26.00	34.00
3	2017	31014	19.78	21.74	25.18	33.31
3	2018	30042	23.63	22.72	24.78	28.88
3	2019	30728	22.92	23.24	24.93	28.91
3	2022	30169	17.22	19.29	24.48	39.01
3	2023	30451	18.06	19.41	24.17	38.36
3	2024	30122	18.34	19.26	24.20	38.20
3	2025	30195	19.51	20.92	24.80	34.78
4	2015	31672	16.00	21.00	23.00	40.00
4	2016	33129	19.00	22.00	22.00	38.00
4	2017	32054	20.07	23.13	21.32	35.48
4	2018	31541	23.15	23.54	20.27	33.04
4	2019	30323	24.03	23.59	20.47	31.92
4	2022	30176	18.17	21.02	21.82	38.99
4	2023	30785	18.67	19.93	20.82	40.58
4	2024	30858	18.90	19.75	21.20	40.15
4	2025	30627	20.60	20.47	21.24	37.69
5	2015	31997	14.00	28.00	23.00	35.00
5	2016	32257	17.00	29.00	22.00	32.00
5	2017	33527	15.97	27.54	22.37	34.11
5	2018	32471	18.87	28.75	21.27	31.11
5	2019	31868	20.47	29.19	20.78	29.57
5	2022	31468	17.01	26.13	21.80	35.05
5	2023	30886	17.07	24.89	21.94	36.11
5	2024	31097	17.13	25.69	21.46	35.72
5	2025	31240	18.78	26.10	21.75	33.37
6	2015	32040	10.00	29.00	31.00	30.00
6	2016	32095	13.00	31.00	28.00	28.00
6	2017	32435	12.63	30.54	28.49	28.34
6	2018	33674	13.11	30.17	26.69	30.04
6	2019	32483	15.55	31.55	26.08	26.81
6	2022	30968	13.01	27.30	27.38	32.30
6	2023	31653	12.99	26.07	26.51	34.43
6	2024	30913	13.33	27.29	26.09	33.30
6	2025	31232	15.10	28.07	25.11	31.72
7	2015	31784	8.00	31.00	27.00	34.00
7	2016	32347	11.00	32.00	26.00	30.00
7	2017	32274	11.48	32.75	25.44	30.33

---

7	2018	32572	11.87	32.98	24.96	30.19
7	2019	33852	13.46	32.69	23.94	29.91
7	2022	30523	12.98	31.12	24.81	31.09
7	2023	31060	12.02	29.80	24.49	33.69
7	2024	31602	12.16	29.26	23.36	35.22
7	2025	30957	13.66	30.26	24.13	31.94
8	2015	32008	8.00	33.00	32.00	27.00
8	2016	31990	11.00	34.00	29.00	26.00
8	2017	32633	11.20	32.04	28.17	28.59
8	2018	32634	11.52	31.65	27.02	29.82
8	2019	32671	12.54	31.83	26.97	28.66
8	2022	31969	11.15	29.76	27.68	31.41
8	2023	30710	11.24	28.36	27.27	33.13
8	2024	31190	11.51	28.71	26.56	33.22
8	2025	31881	13.10	29.32	26.20	31.39
11	2015	30904	19.00	34.00	26.00	21.00
11	2016	30985	22.00	34.00	24.00	20.00
11	2017	31993	24.34	32.88	22.69	20.09
11	2018	31726	20.82	30.71	23.82	24.65
11	2019	31496	23.36	30.74	22.76	23.14
11	2022	31470	21.33	29.43	22.81	26.44
11	2023	32902	20.52	29.95	22.99	26.55
11	2024	31890	21.81	30.50	22.42	25.26
11	2025	31599	23.28	30.79	21.72	24.21

---

### 2025 Smarter Balanced Assessment Results Riverside Countywide Grade Comparison by Year: Mathematics

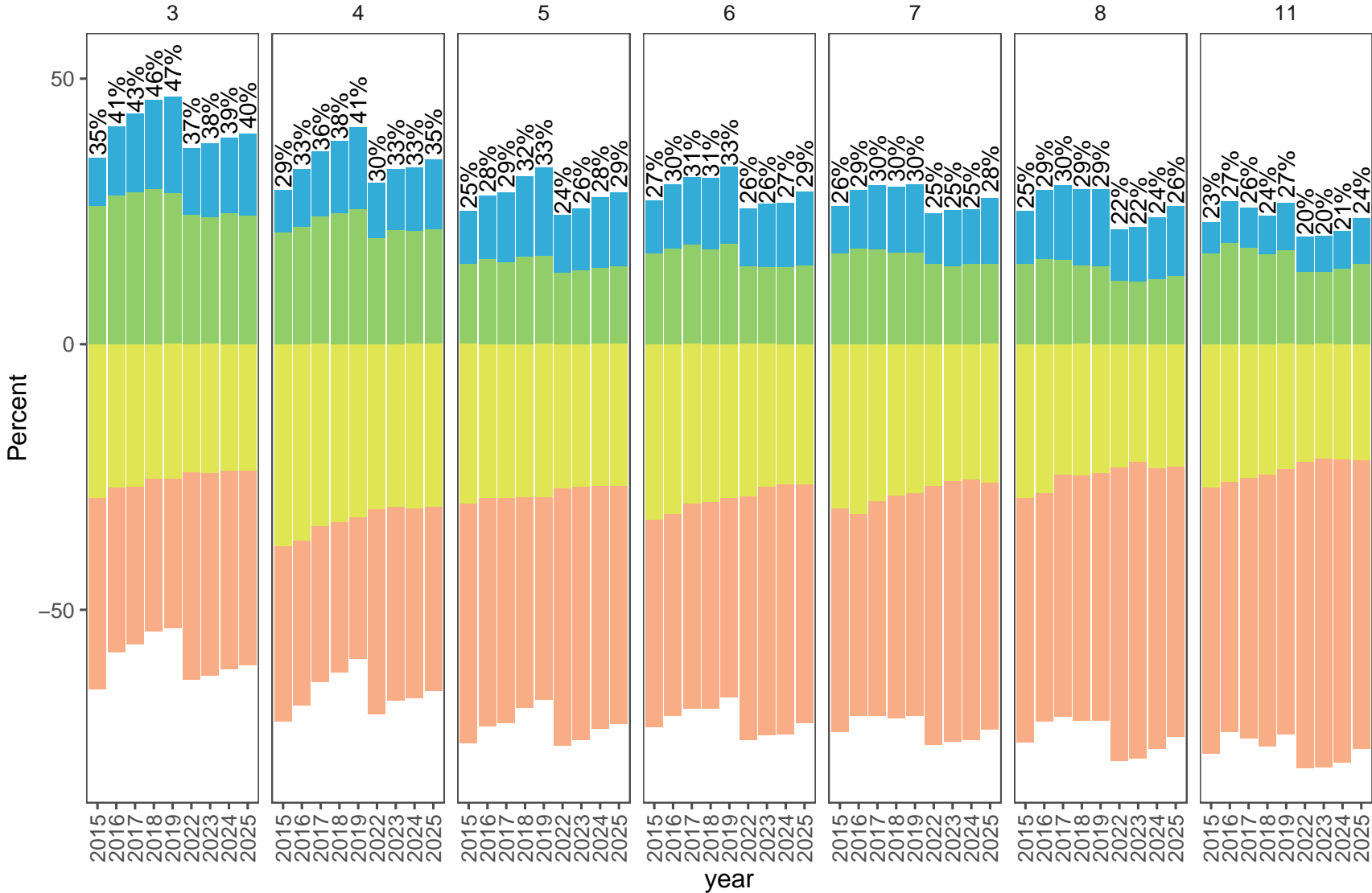


Table 9: Riverside Countywide Mathematics by Grade by Year

Grade	year	n	% Exceeded	% Met	% Nearly Met	% Not Met
3	2015	32878	9.00	26.00	29.00	36.00
3	2016	31698	13.00	28.00	27.00	31.00
3	2017	31100	14.98	28.51	26.93	29.58
3	2018	30091	16.78	29.21	25.24	28.77
3	2019	30806	18.15	28.47	25.31	28.07
3	2022	30218	12.55	24.33	24.06	39.06
3	2023	30537	13.83	23.89	24.27	38.02
3	2024	30330	14.31	24.58	23.76	37.35
3	2025	30305	15.49	24.15	23.86	36.50
4	2015	31780	8.00	21.00	38.00	33.00
4	2016	33253	11.00	22.00	37.00	31.00
4	2017	32154	12.41	23.99	34.26	29.34
4	2018	31635	13.71	24.59	33.47	28.23
4	2019	30392	15.39	25.41	32.63	26.56
4	2022	30217	10.46	19.89	31.10	38.55
4	2023	30850	11.49	21.50	30.64	36.37
4	2024	31034	12.05	21.29	31.05	35.62
4	2025	30745	13.04	21.65	30.63	34.68
5	2015	32061	10.00	15.00	30.00	45.00
5	2016	32342	12.00	16.00	29.00	43.00
5	2017	33635	13.25	15.38	29.00	42.37
5	2018	32531	15.19	16.40	28.74	39.67
5	2019	31991	16.52	16.65	28.79	38.03
5	2022	31519	11.00	13.40	27.24	48.36
5	2023	30965	11.72	13.83	26.85	47.61
5	2024	31262	13.28	14.34	26.67	45.70
5	2025	31351	14.05	14.56	26.68	44.71
6	2015	32124	10.00	17.00	33.00	39.00
6	2016	32157	12.00	18.00	32.00	38.00
6	2017	32537	12.78	18.66	30.01	38.56
6	2018	33734	13.59	17.78	29.77	38.85
6	2019	32547	14.64	18.84	29.00	37.52
6	2022	30972	10.95	14.59	28.63	45.83
6	2023	31702	11.87	14.53	26.81	46.79
6	2024	31052	12.06	14.52	26.46	46.96
6	2025	31297	13.90	14.83	26.32	44.96
7	2015	31801	9.00	17.00	31.00	42.00
7	2016	32422	11.00	18.00	32.00	38.00
7	2017	32412	12.12	17.83	29.64	40.41

---

7	2018	32595	12.31	17.26	28.56	41.87
7	2019	33921	12.85	17.24	27.98	41.93
7	2022	30534	9.60	15.02	26.74	48.64
7	2023	31103	10.52	14.68	25.87	48.93
7	2024	31731	10.40	15.05	25.56	48.99
7	2025	31014	12.42	15.14	26.07	46.37
8	2015	32216	10.00	15.00	29.00	46.00
8	2016	32053	13.00	16.00	28.00	43.00
8	2017	32712	13.97	15.87	24.66	45.50
8	2018	32621	14.38	14.84	24.70	46.08
8	2019	32675	14.56	14.62	24.23	46.59
8	2022	31970	9.60	11.92	23.25	55.23
8	2023	30741	10.29	11.73	22.23	55.75
8	2024	31338	11.64	12.23	23.42	52.71
8	2025	31923	13.22	12.81	23.10	50.88
11	2015	30747	6.00	17.00	27.00	50.00
11	2016	30879	8.00	19.00	26.00	47.00
11	2017	31976	7.67	18.10	25.25	48.98
11	2018	31712	7.39	16.82	24.63	51.15
11	2019	31436	9.03	17.62	23.51	49.84
11	2022	31416	6.70	13.52	22.09	57.68
11	2023	32863	6.86	13.57	21.51	58.06
11	2024	31887	7.16	14.18	21.64	57.02
11	2025	31559	8.74	15.00	21.90	54.36

---

### 2025 Smarter Balanced Assessment Results Riverside Countywide Grade Comparison by Year: Science

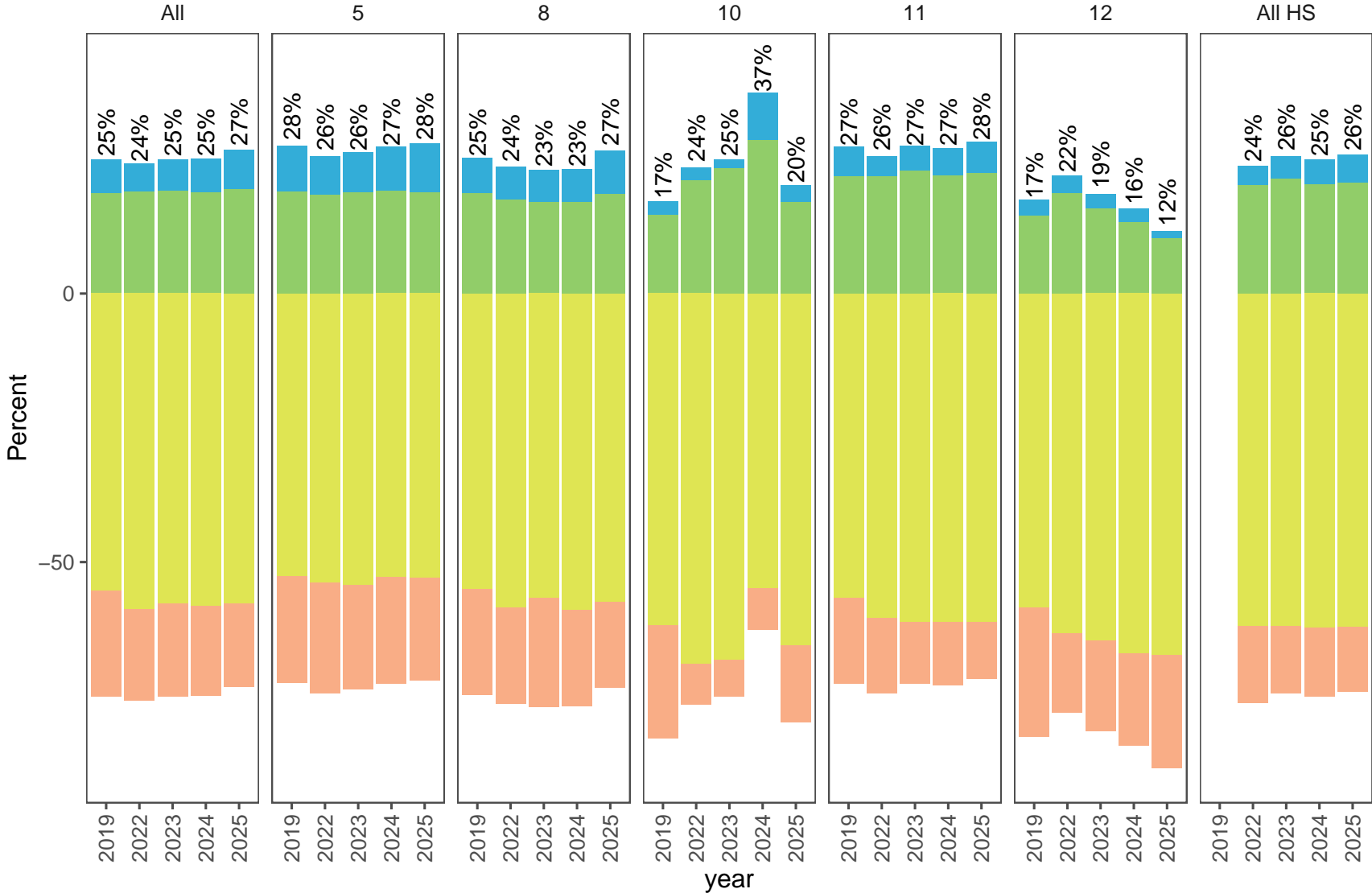


Table 10: Riverside Countywide Science by Grade by Year

Grade	year	n	% Exceeded	% Met	% Nearly Met	% Not Met
All	2019	103467	6.40	18.63	55.28	19.69
All	2022	114162	5.31	18.88	58.74	17.07
All	2023	94559	5.88	19.09	57.68	17.35
All	2024	97822	6.33	18.83	58.14	16.70
All	2025	99389	7.39	19.39	57.67	15.55
5	2019	31909	8.62	18.95	52.65	19.78
5	2022	31558	7.25	18.32	53.90	20.54
5	2023	30966	7.51	18.79	54.23	19.47
5	2024	31229	8.34	19.06	52.75	19.85
5	2025	31368	9.09	18.84	52.90	19.17
8	2019	32733	6.70	18.58	55.10	19.63
8	2022	32089	6.19	17.38	58.52	17.92
8	2023	30790	6.00	17.03	56.63	20.34
8	2024	31348	6.21	16.95	58.94	17.90
8	2025	31990	8.15	18.52	57.36	15.97
10	2019	753	2.52	14.61	61.75	21.12
10	2022	238	2.52	21.01	68.91	7.56
10	2023	292	1.71	23.29	68.15	6.85
10	2024	404	8.91	28.47	54.95	7.67
10	2025	2687	3.16	17.05	65.50	14.29
11	2019	20711	5.55	21.80	56.70	15.95
11	2022	24513	3.78	21.75	60.51	13.96
11	2023	25531	4.65	22.80	61.12	11.43
11	2024	27926	5.10	21.94	61.13	11.83
11	2025	29383	5.95	22.35	61.09	10.61
12	2019	17361	2.97	14.52	58.49	24.02
12	2022	25764	3.32	18.68	63.18	14.82
12	2023	6980	2.77	15.74	64.58	16.91
12	2024	6915	2.63	13.19	66.97	17.21
12	2025	3961	1.39	10.28	67.31	21.03
All HS	2022	50515	3.54	20.18	61.91	14.37
All HS	2023	32803	4.23	21.30	61.92	12.55
All HS	2024	35245	4.66	20.30	62.20	12.84
All HS	2025	36031	5.24	20.62	62.10	12.03

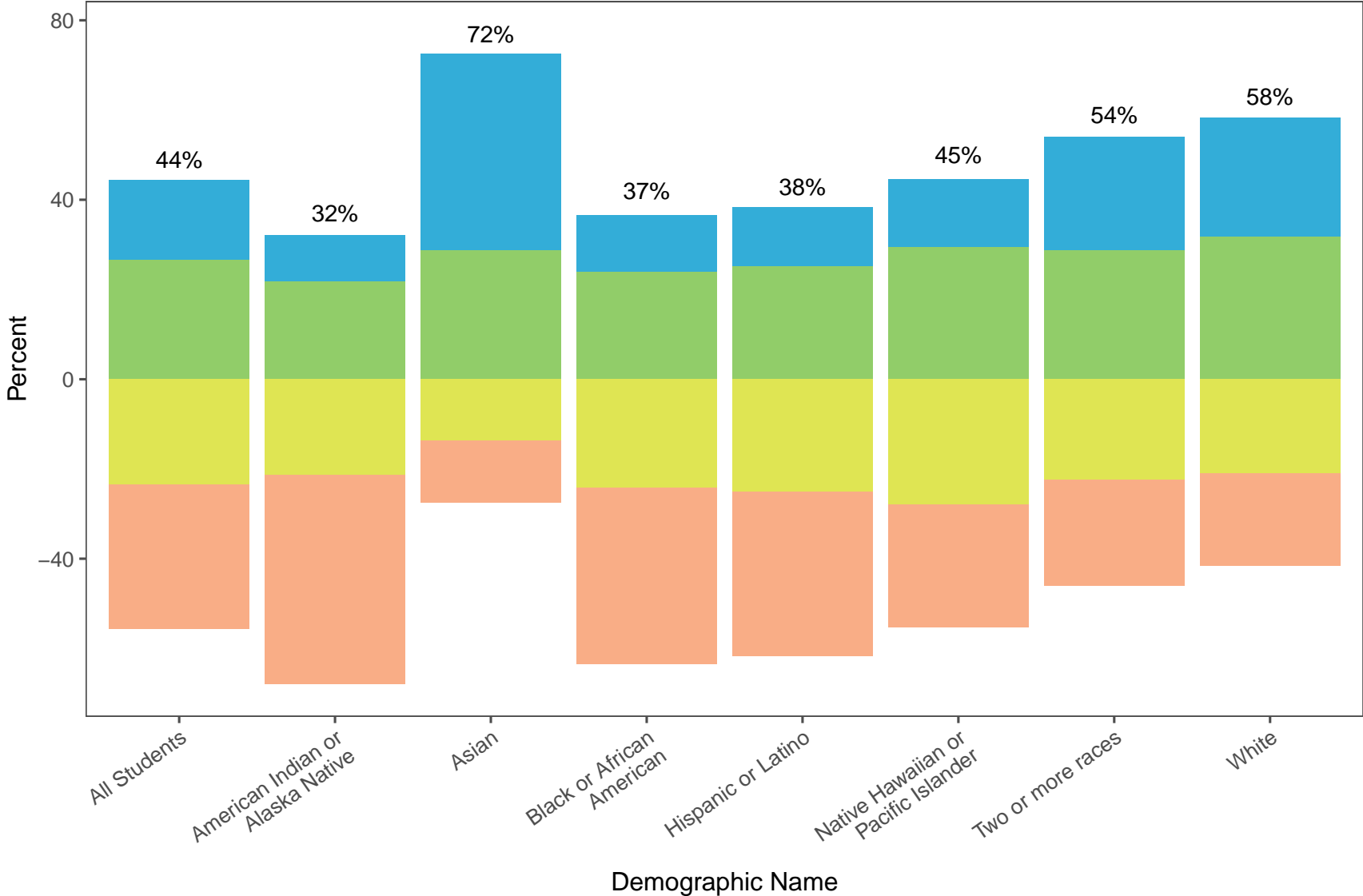
### Section 3: Riverside Countywide English Language Arts, Mathematics, and Science Results, Comparison by Student Group

Riverside County students are demographically diverse. The ethnic/racial diversity in 2024-2025 was 67.1 percent Hispanic or Latino; 0.4 percent American Indian or Alaska Native; 3.8 percent Asian; 0.3 percent Pacific Islander; 1.8 percent Filipino; 5.6 percent Black or African American; 16.1 percent White; 3.6 percent two or more races; and 1.3 percent not reported (Source: [CDE DataQuest](#)). In Riverside County, 15.9 percent of students are classified as English learners and 13.3 percent are reclassified as fluent English proficient (RFEP). Over 60 different languages are spoken including Spanish, Mandarin (Putonghua), Arabic, Filipino (Pilipino or Tagalog), and Vietnamese representing languages of the largest percentages of English learner and RFEP students (Source: [CDE DataQuest](#)). 74.3 percent of students in Riverside County schools are socioeconomically disadvantaged, 15.0 percent are students with disabilities (63,057 students), and 0.7 percent are foster youth (3,009 students) (Source: [CDE DataQuest](#)). It is important to note that some students represent multiple student groups. For example, a student from any racial/ethnic group may also be counted as socioeconomically disadvantaged and/or as an English learner or student with disabilities based on a variety of student identification factors.

For many years, educational data trends and educational research have illuminated the fact that there is a pervasive achievement gap between student groups. White and Asian students have demonstrated higher rates of performance on standardized assessments when compared to other racial/ethnic student groups with the largest groups including Hispanic and Black/African American students. There is also a gap between socioeconomically disadvantaged (SED) students and non-SED students, between English learners (ELs) and non-ELs, and between students with disabilities (SWD) and students not designated as SWD. In order to ensure that all students are well prepared for college and the workforce upon graduation from high school, it is imperative that we meet the needs of all students, regardless of which group(s) they might represent, by purposefully and intentionally designing equitable learning environments.

### 2025 Smarter Balanced Assessment Results

#### Riverside Countywide Student Race/Ethnicity Comparison: English Language Arts



### Multi-year Smarter Balanced Assessment Results Riverside Countywide Student Race/Ethnicity Comparison: English Language Arts

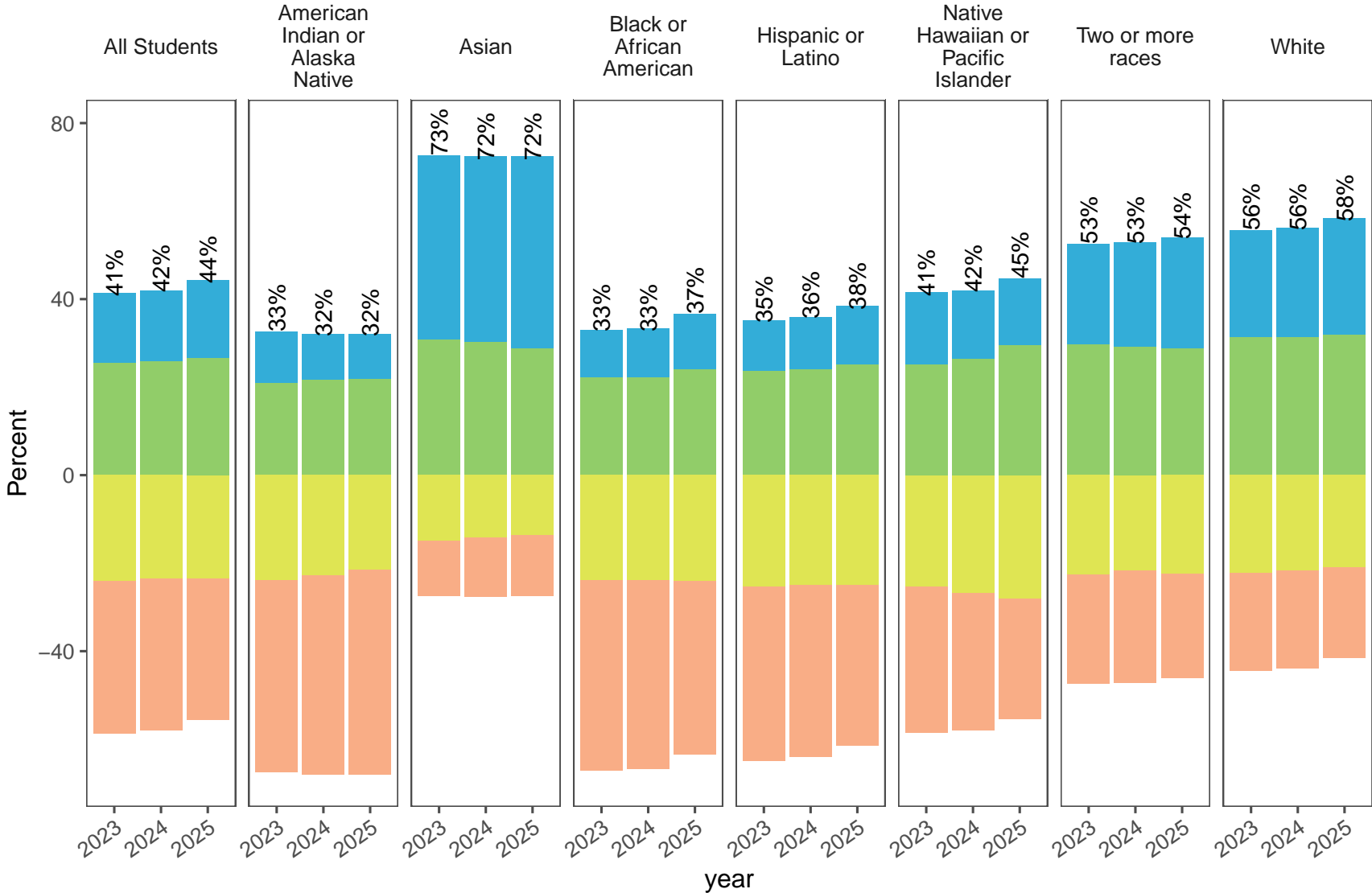
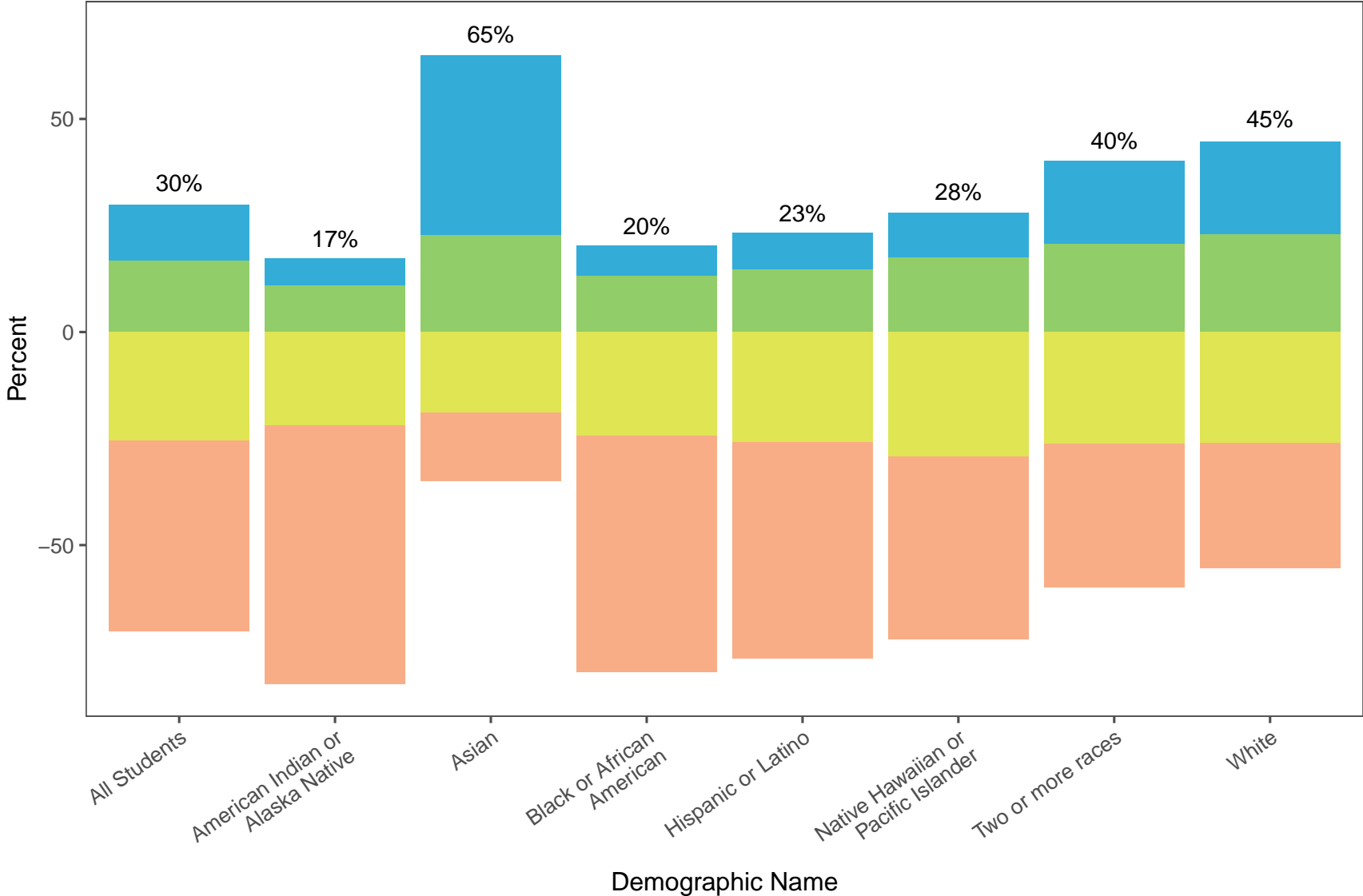


Table 11: Riverside Countywide English Language Arts by Ethnicity for 2025

Demographic Name	year	n	% Exceeded	% Met	% Nearly Met	% Not Met
All Students	2023	218447	15.82	25.54	24.02	34.61
All Students	2024	217672	16.17	25.84	23.61	34.38
All Students	2025	217731	17.70	26.62	23.57	32.11
American Indian or Alaska Native	2023	841	11.65	20.93	23.90	43.52
American Indian or Alaska Native	2024	830	10.24	21.69	22.77	45.30
American Indian or Alaska Native	2025	774	10.21	21.83	21.45	46.51
Asian	2023	7880	41.70	30.82	14.94	12.54
Asian	2024	8135	42.11	30.34	14.17	13.37
Asian	2025	8524	43.70	28.77	13.74	13.80
Black or African American	2023	12692	10.70	22.23	23.79	43.28
Black or African American	2024	12339	10.98	22.30	23.87	42.85
Black or African American	2025	12173	12.58	23.99	24.09	39.35
Hispanic or Latino	2023	145416	11.59	23.60	25.30	39.52
Hispanic or Latino	2024	145419	11.86	24.11	24.95	39.08
Hispanic or Latino	2025	145924	13.31	25.11	25.05	36.52
Native Hawaiian or Pacific Islander	2023	724	16.30	25.14	25.41	33.15
Native Hawaiian or Pacific Islander	2024	752	15.69	26.33	26.86	31.12
Native Hawaiian or Pacific Islander	2025	715	15.10	29.51	27.97	27.41
Two or more races	2023	9697	22.85	29.79	22.52	24.83
Two or more races	2024	10323	23.70	29.14	21.56	25.59
Two or more races	2025	10697	25.12	28.84	22.41	23.63
White	2023	37053	24.25	31.34	22.26	22.15
White	2024	35733	24.75	31.34	21.65	22.26
White	2025	34789	26.51	31.86	20.99	20.64

### 2025 Smarter Balanced Assessment Results Riverside Countywide Student Race/Ethnicity Comparison: Mathematics



### Multi-year Smarter Balanced Assessment Results Riverside Countywide Student Race/Ethnicity Comparison: Mathematics

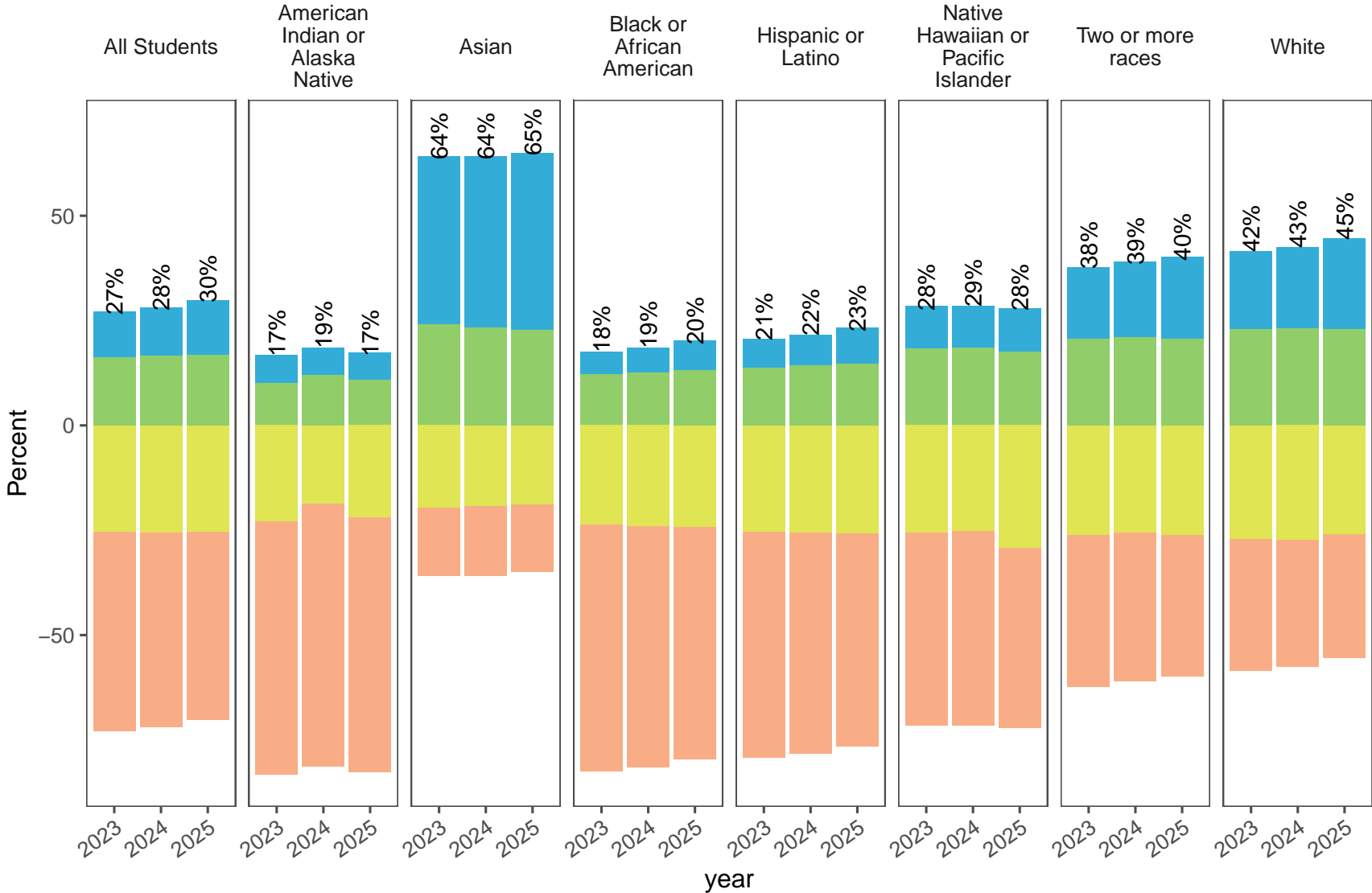
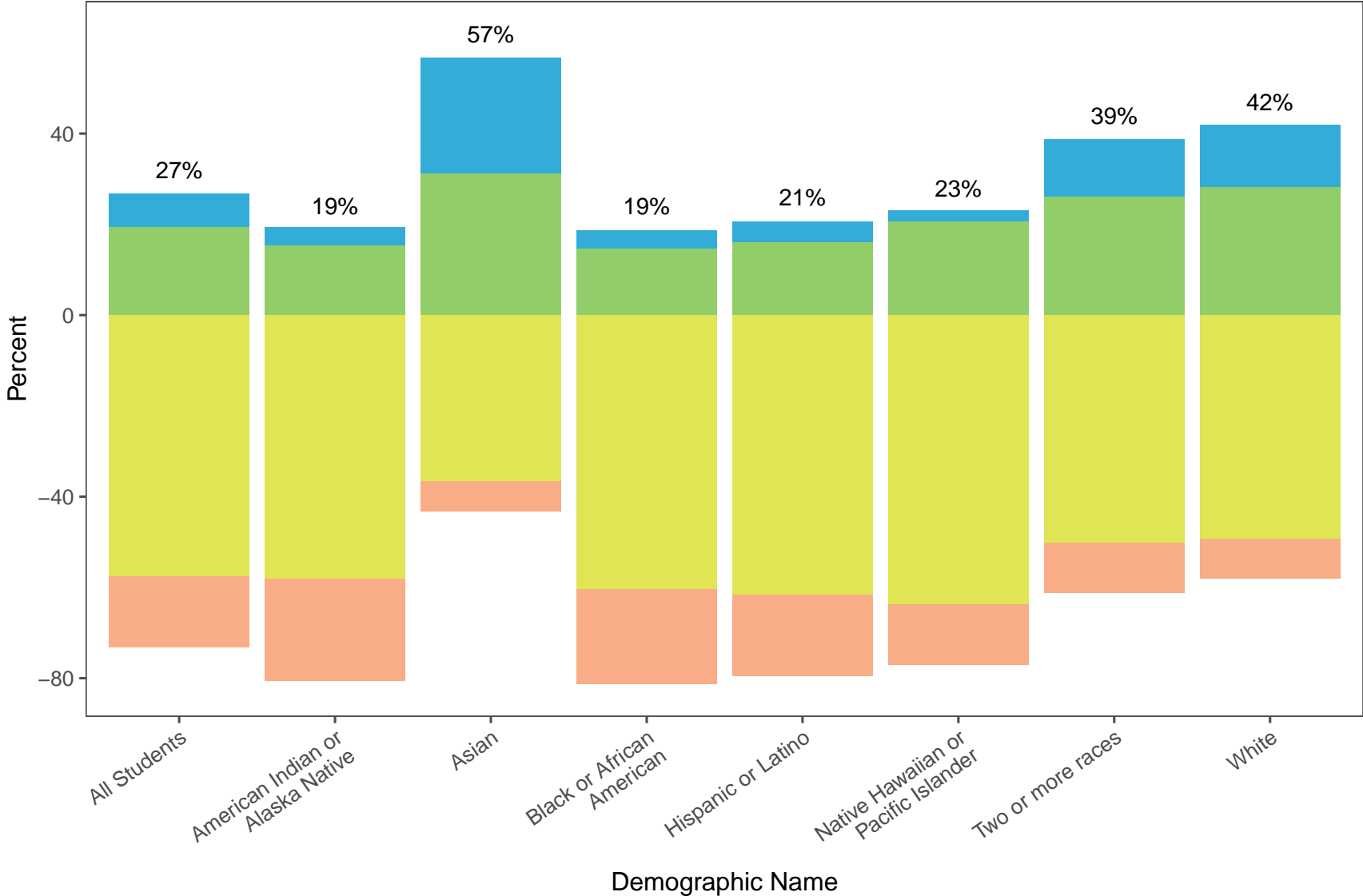


Table 12: Riverside Countywide Mathematics by Ethnicity for 2025

Demographic Name	year	n	% Exceeded	% Met	% Nearly Met	% Not Met
All Students	2023	218761	10.90	16.20	25.43	47.47
All Students	2024	218634	11.53	16.55	25.50	46.42
All Students	2025	218194	12.96	16.82	25.49	44.73
American Indian or Alaska Native	2023	838	6.56	10.14	23.03	60.26
American Indian or Alaska Native	2024	828	6.52	12.08	18.72	62.68
American Indian or Alaska Native	2025	772	6.48	10.88	21.89	60.75
Asian	2023	7943	40.01	24.12	19.58	16.29
Asian	2024	8262	40.91	23.28	19.15	16.67
Asian	2025	8638	42.34	22.69	18.93	16.05
Black or African American	2023	12655	5.53	12.10	23.62	58.75
Black or African American	2024	12319	5.91	12.60	24.04	57.46
Black or African American	2025	12135	7.11	13.18	24.28	55.43
Hispanic or Latino	2023	145733	6.88	13.81	25.46	53.85
Hispanic or Latino	2024	146258	7.46	14.25	25.62	52.67
Hispanic or Latino	2025	146320	8.63	14.76	25.89	50.72
Native Hawaiian or Pacific Islander	2023	723	10.10	18.40	25.59	45.92
Native Hawaiian or Pacific Islander	2024	754	10.08	18.44	25.20	46.29
Native Hawaiian or Pacific Islander	2025	713	10.38	17.53	29.17	42.92
Two or more races	2023	9693	16.99	20.71	26.20	36.10
Two or more races	2024	10335	17.94	21.04	25.70	35.32
Two or more races	2025	10719	19.40	20.71	26.18	33.72
White	2023	37028	18.56	22.97	27.18	31.29
White	2024	35722	19.36	23.16	27.27	30.21
White	2025	34754	21.64	22.96	26.03	29.37

### 2025 Smarter Balanced Assessment Results Riverside Countywide Student Race/Ethnicity Comparison: Science



### Multi-year Smarter Balanced Assessment Results

#### Riverside Countywide Student Race/Ethnicity Comparison: Science

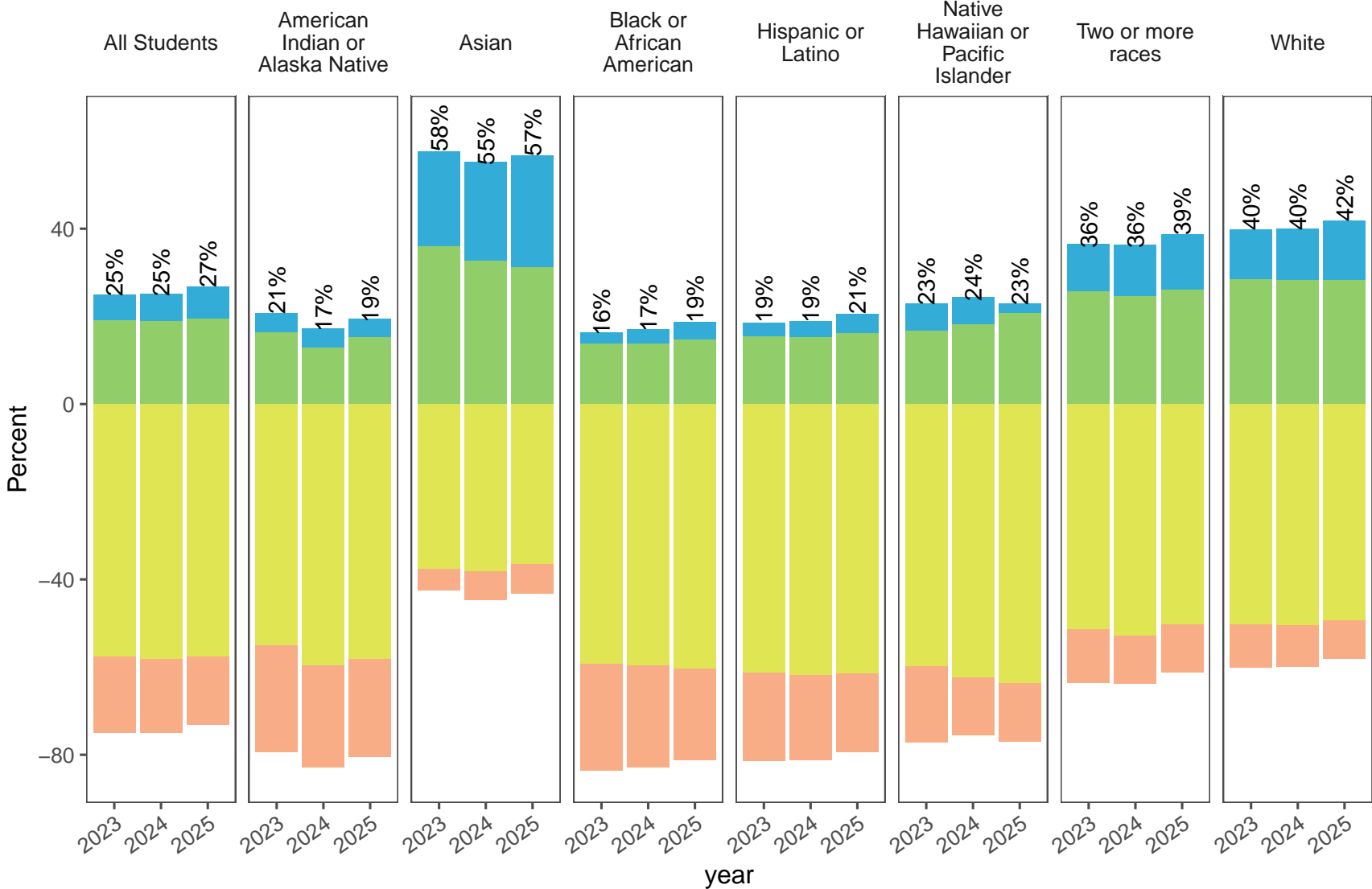
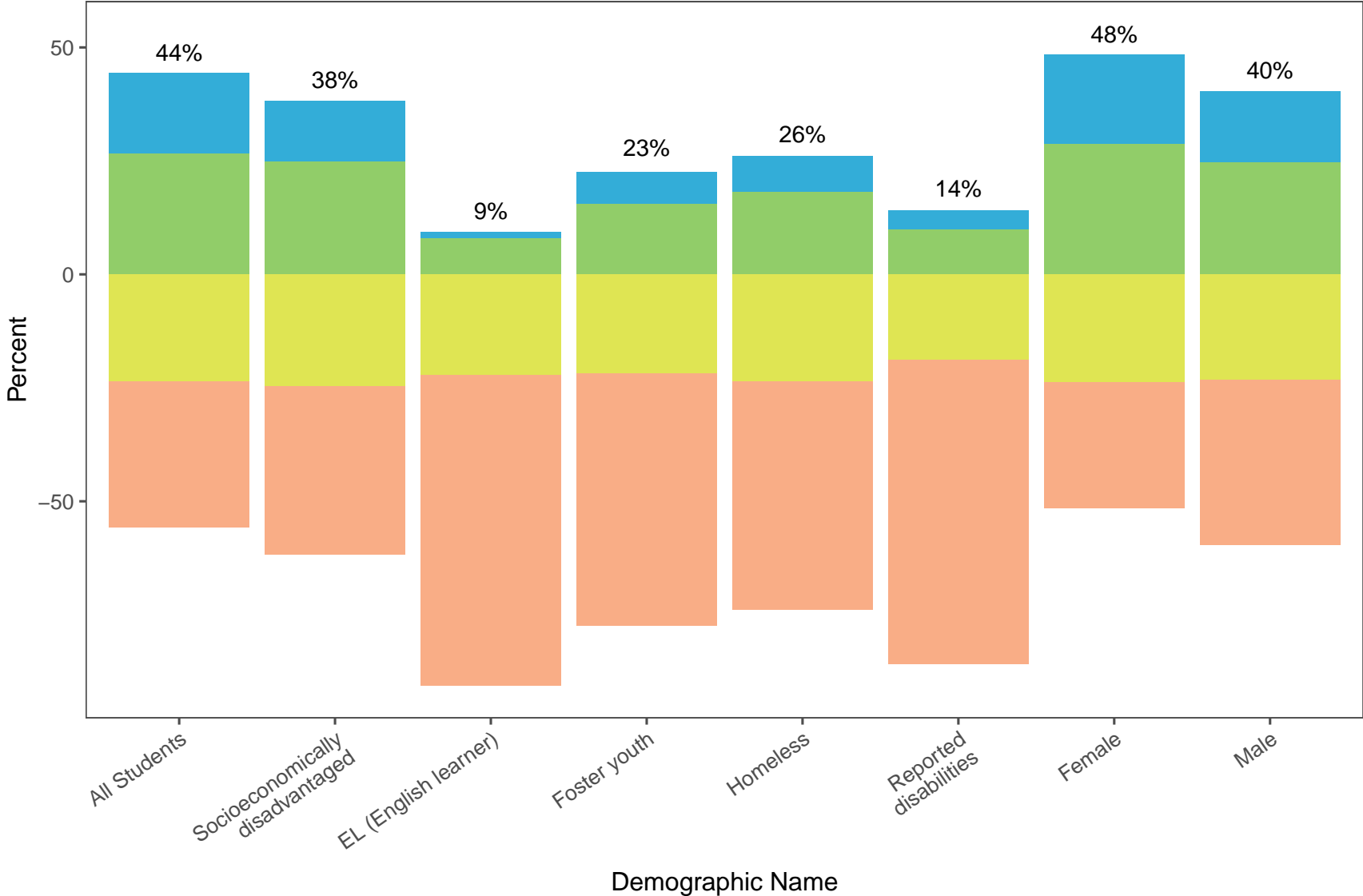


Table 13: Riverside Countywide Science by Ethnicity for 2025

Demographic Name	year	n	% Exceeded	% Met	% Nearly Met	% Not Met
All Students	2023	94559	5.88	19.09	57.68	17.35
All Students	2024	97822	6.33	18.83	58.14	16.70
All Students	2025	99389	7.39	19.39	57.67	15.55
American Indian or Alaska Native	2023	363	4.41	16.25	55.10	24.24
American Indian or Alaska Native	2024	396	4.29	12.88	59.60	23.23
American Indian or Alaska Native	2025	380	4.21	15.26	58.16	22.37
Asian	2023	3479	21.50	36.04	37.57	4.89
Asian	2024	3745	22.72	32.58	38.13	6.57
Asian	2025	3773	25.50	31.25	36.63	6.63
Black or African American	2023	5420	2.64	13.73	59.28	24.35
Black or African American	2024	5677	3.28	13.83	59.70	23.20
Black or African American	2025	5679	4.07	14.62	60.45	20.87
Hispanic or Latino	2023	62940	3.28	15.33	61.34	20.06
Hispanic or Latino	2024	65264	3.58	15.29	61.86	19.27
Hispanic or Latino	2025	66875	4.46	16.09	61.56	17.89
Native Hawaiian or Pacific Islander	2023	293	6.14	16.72	59.73	17.41
Native Hawaiian or Pacific Islander	2024	364	6.32	18.13	62.36	13.19
Native Hawaiian or Pacific Islander	2025	339	2.36	20.65	63.72	13.27
Two or more races	2023	4016	10.83	25.62	51.42	12.13
Two or more races	2024	4244	11.57	24.65	52.85	10.93
Two or more races	2025	4610	12.78	26.01	50.24	10.98
White	2023	16177	11.34	28.50	50.28	9.87
White	2024	16111	11.89	28.22	50.47	9.42
White	2025	15804	13.68	28.24	49.42	8.66

### 2025 Smarter Balanced Assessment Results Riverside Countywide Student Program Comparison: English Language Arts



# Multi-year Smarter Balanced Assessment Results

## Riverside Countywide Student Program Comparison: English Language Arts

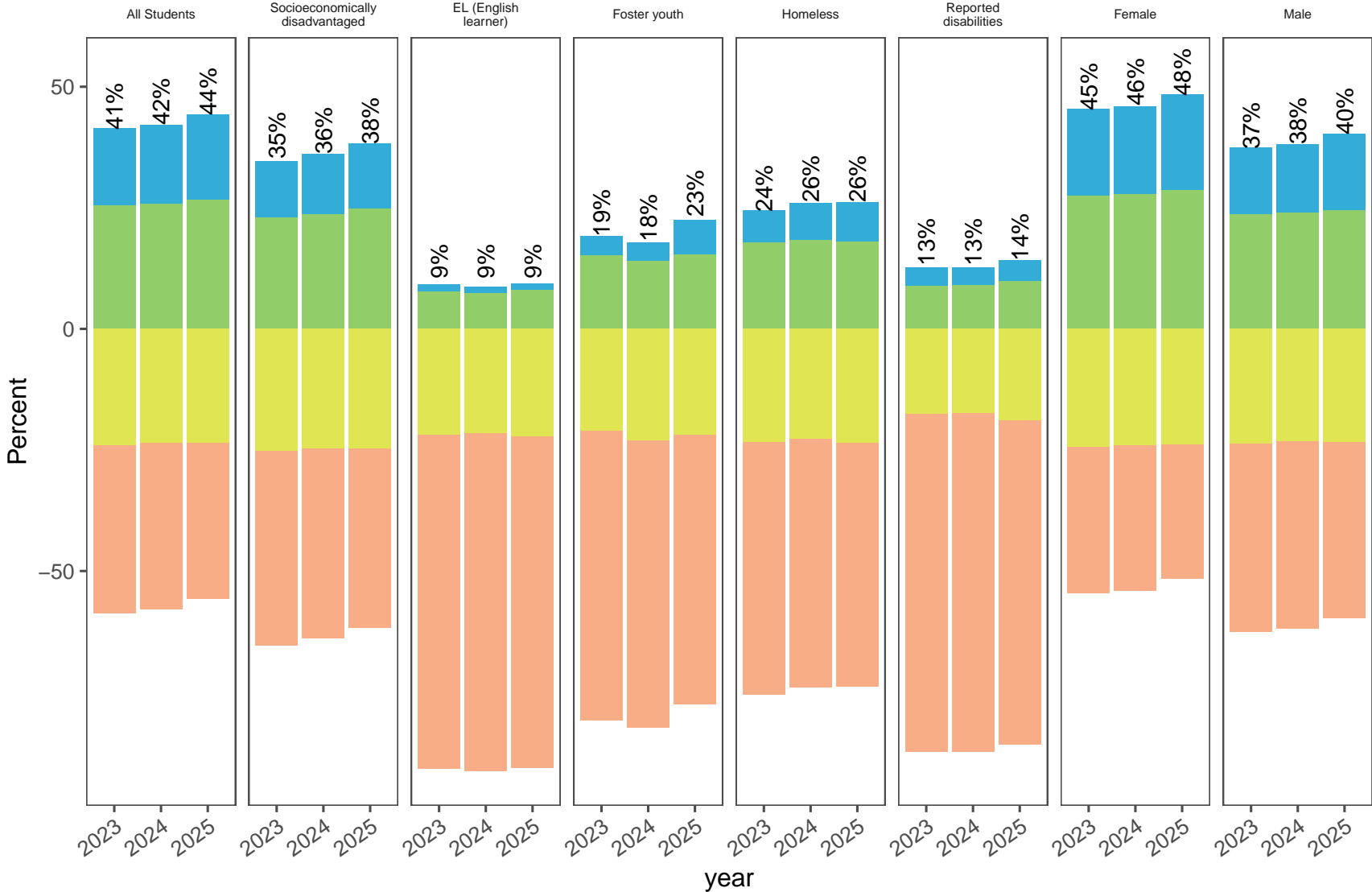
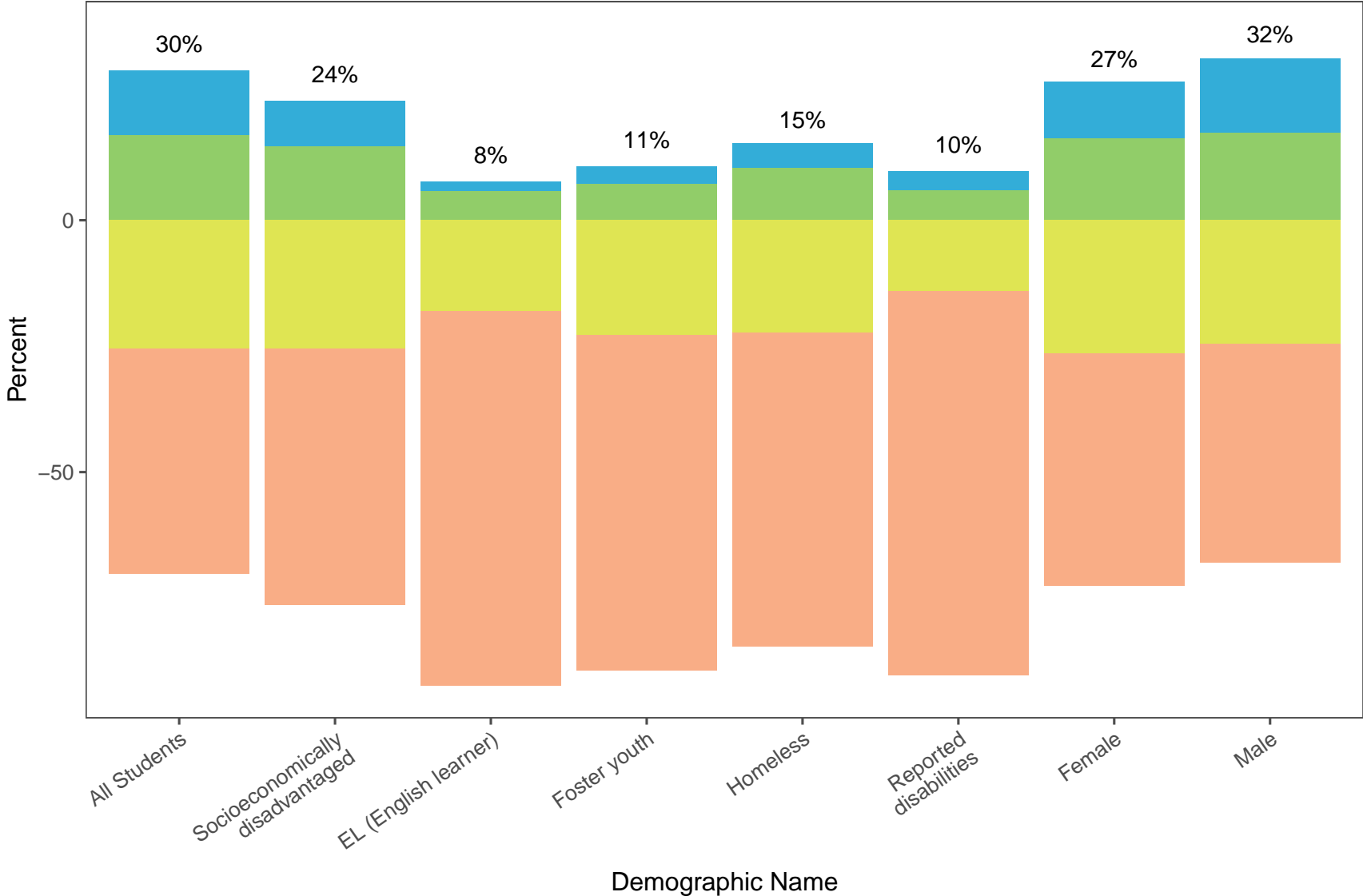


Table 14: Riverside Countywide English Language Arts by Program for 2025

Demographic Name	year	n	% Exceeded	% Met	% Nearly Met	% Not Met
All Students	2023	218447	15.82	25.54	24.02	34.61
All Students	2024	217672	16.17	25.84	23.61	34.38
All Students	2025	217731	17.70	26.62	23.57	32.11
Socioeconomically disadvantaged	2023	157156	11.57	23.04	25.17	40.23
Socioeconomically disadvantaged	2024	164143	12.33	23.77	24.74	39.16
Socioeconomically disadvantaged	2025	163610	13.46	24.80	24.68	37.06
EL (English learner)	2023	35636	1.48	7.75	21.89	68.88
EL (English learner)	2024	33672	1.27	7.47	21.52	69.74
EL (English learner)	2025	32753	1.39	8.00	22.24	68.38
Foster youth	2023	1035	4.06	15.17	20.97	59.81
Foster youth	2024	1007	3.67	14.10	23.04	59.19
Foster youth	2025	951	7.05	15.46	21.87	55.63
Homeless	2023	5565	6.63	17.83	23.40	52.15
Homeless	2024	6556	7.54	18.38	22.82	51.27
Homeless	2025	6788	8.03	18.11	23.57	50.29
Reported disabilities	2023	28423	3.74	8.95	17.57	69.73
Reported disabilities	2024	29633	3.75	8.99	17.43	69.83
Reported disabilities	2025	30922	4.32	9.84	18.91	66.93
Female	2023	107127	17.88	27.53	24.36	30.23
Female	2024	106819	18.24	27.78	24.02	29.96
Female	2025	107037	19.70	28.70	23.84	27.76
Male	2023	111233	13.84	23.63	23.70	38.82
Male	2024	110772	14.17	23.97	23.22	38.65
Male	2025	110619	15.76	24.59	23.31	36.33

### 2025 Smarter Balanced Assessment Results Riverside Countywide Student Program Comparison: Mathematics



# Multi-year Smarter Balanced Assessment Results

## Riverside Countywide Student Program Comparison: Mathematics

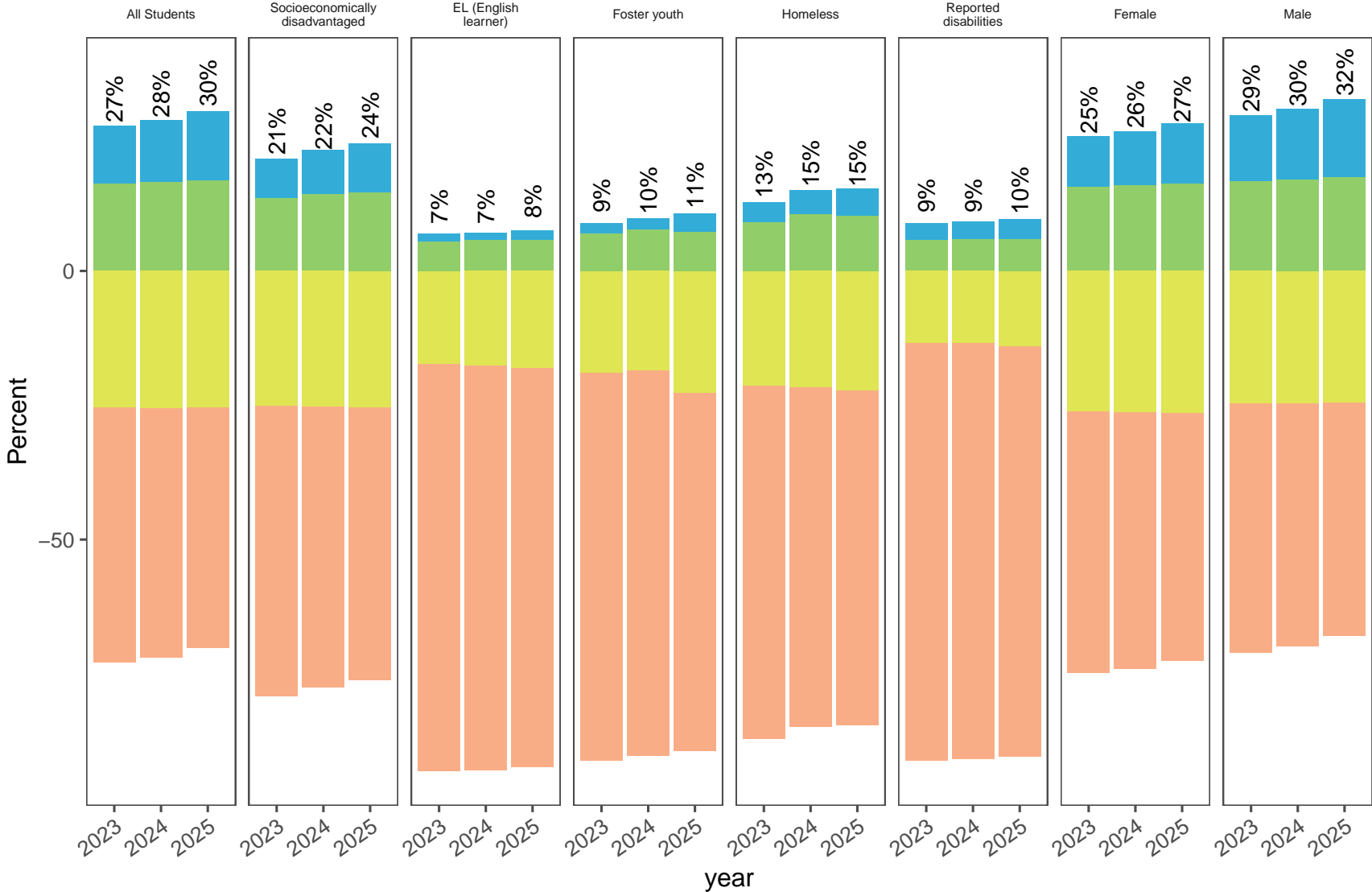
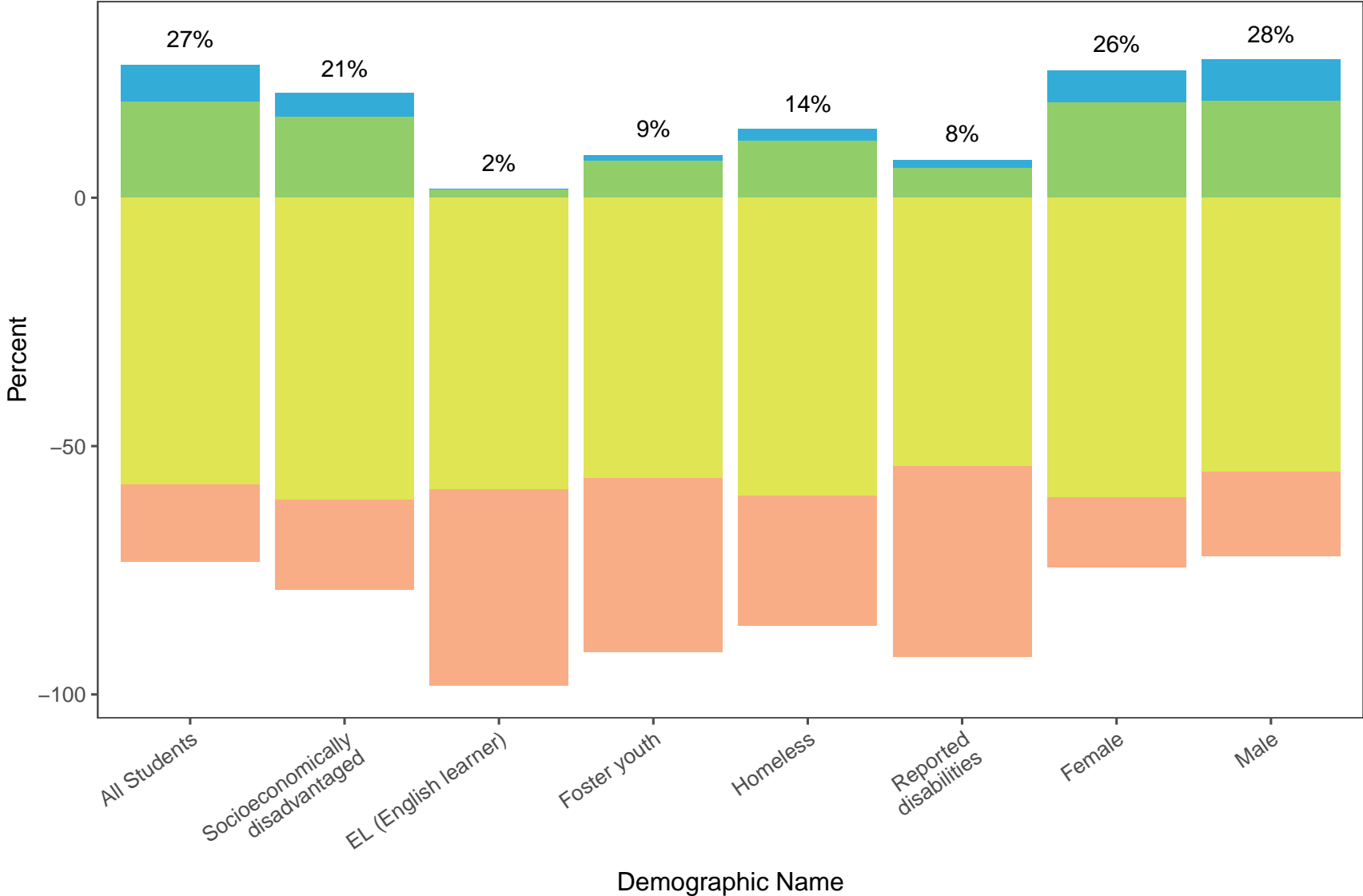


Table 15: Riverside Countywide Mathematics by Program for 2025

Demographic Name	n	% Exceeded	% Met	% Nearly Met	% Not Met
All Students	218761	10.90	16.20	25.43	47.47
All Students	218634	11.53	16.55	25.50	46.42
All Students	218194	12.96	16.82	25.49	44.73
Socioeconomically disadvantaged	157365	7.26	13.58	25.10	54.05
Socioeconomically disadvantaged	164793	8.19	14.28	25.30	52.23
Socioeconomically disadvantaged	164016	9.14	14.60	25.48	50.78
EL (English learner)	36258	1.40	5.54	17.37	75.69
EL (English learner)	34833	1.39	5.76	17.58	75.28
EL (English learner)	33489	1.79	5.82	18.07	74.32
Foster youth	1036	1.93	6.95	19.02	72.10
Foster youth	1005	1.99	7.76	18.51	71.74
Foster youth	948	3.38	7.28	22.78	66.56
Homeless	5702	3.67	9.14	21.43	65.77
Homeless	6887	4.44	10.64	21.68	63.24
Homeless	7011	5.01	10.34	22.32	62.33
Reported disabilities	28334	3.17	5.71	13.35	77.78
Reported disabilities	29586	3.27	5.91	13.46	77.36
Reported disabilities	30834	3.65	5.98	14.07	76.30
Female	107283	9.54	15.60	26.24	48.62
Female	107253	9.90	16.02	26.30	47.77
Female	107289	11.25	16.22	26.40	46.14
Male	111392	12.22	16.78	24.65	46.35
Male	111299	13.10	17.06	24.72	45.12
Male	110830	14.63	17.40	24.62	43.36

### 2025 Smarter Balanced Assessment Results Riverside Countywide Student Program Comparison: Science



# Multi-year Smarter Balanced Assessment Results

## Riverside Countywide Student Program Comparison: Science

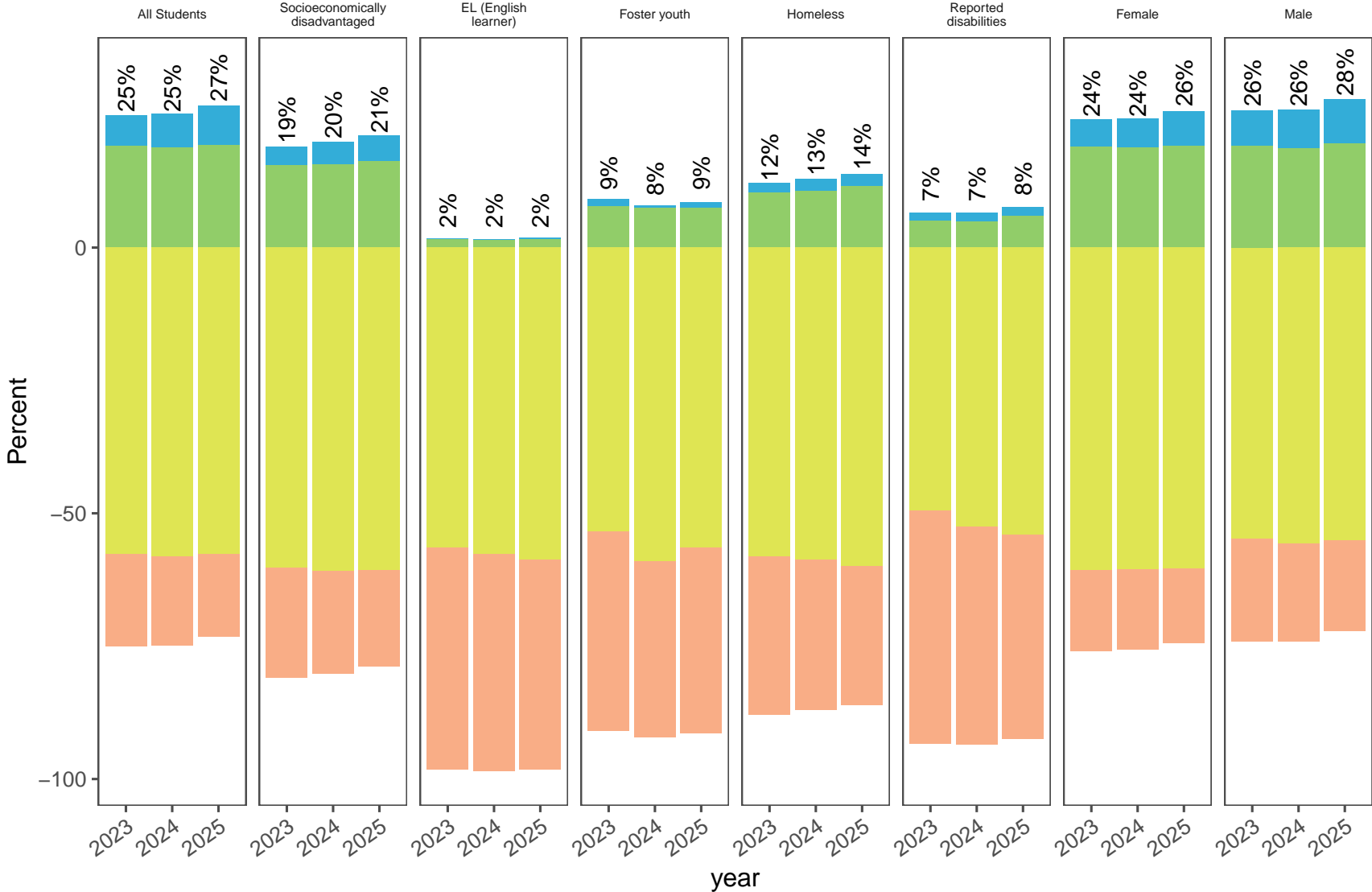


Table 16: Riverside Countywide Science by Program for 2025

Demographic Name	year	n	% Exceeded	% Met	% Nearly Met	% Not Met
All Students	2023	94559	5.88	19.09	57.68	17.35
All Students	2024	97822	6.33	18.83	58.14	16.70
All Students	2025	99389	7.39	19.39	57.67	15.55
Socioeconomically disadvantaged	2023	67614	3.53	15.51	60.30	20.66
Socioeconomically disadvantaged	2024	73301	4.17	15.71	60.88	19.25
Socioeconomically disadvantaged	2025	74965	4.88	16.26	60.71	18.16
EL (English learner)	2023	13687	0.05	1.65	56.48	41.81
EL (English learner)	2024	13228	0.05	1.48	57.58	40.88
EL (English learner)	2025	13171	0.17	1.61	58.74	39.49
Foster youth	2023	427	1.41	7.73	53.40	37.47
Foster youth	2024	417	0.48	7.43	58.99	33.09
Foster youth	2025	443	1.13	7.45	56.43	34.99
Homeless	2023	2446	1.76	10.43	58.09	29.72
Homeless	2024	2923	2.33	10.64	58.81	28.22
Homeless	2025	3198	2.38	11.54	60.01	26.08
Reported disabilities	2023	11818	1.46	5.14	49.57	43.83
Reported disabilities	2024	12642	1.64	4.93	52.50	40.93
Reported disabilities	2025	13198	1.65	5.99	53.99	38.37
Female	2023	46313	5.05	19.00	60.66	15.29
Female	2024	47959	5.44	18.93	60.62	15.00
Female	2025	48713	6.45	19.16	60.38	14.00
Male	2023	48191	6.66	19.16	54.83	19.35
Male	2024	49803	7.19	18.71	55.76	18.34
Male	2025	50622	8.28	19.58	55.09	17.05

#### Section 4: Riverside Countywide Smarter Balanced Assessment Results, Comparison by Cohort and Achievement Level

This portion of the CAASPP report shows how well each cohort, or grade level group, of students performed compared to performance of the same group (cohort) of students in the prior grade level. For example, third grade student scores from prior year 2024 Smarter Balanced Assessments can be compared to fourth grade student scores from the most recent 2025 Smarter Balanced Assessments to determine if the cohort group of students improved from results in the prior year.

It is important to note that this is a **cohort** (student group) report and **not a matched-case report**. This means that individual student scores are not matched with prior year scores in order to determine cohort growth. Instead, the overall student scores from a cohort of students (e.g., grade three in 2024) are compared to the overall student scores from the same cohort group of students in the subsequent grade level (e.g., grade four in 2025). Scores for students in grade eleven in 2025 are compared to grade eight scores from the 2022 test administration and grade five scores in 2019 test administration because students do not take Smarter Balanced Assessments in grades nine and ten.

For all grade levels, there are no results reported for 2020 and 2021. Testing was suspended in 2020 due to the COVID-19 pandemic resulting in school closures in spring 2020 through most of the 2020-2021 school year. In spring 2021, districts were given the option to administer the Smarter Balanced assessments or utilize local assessments that met specific criteria adopted by the CA State Board of Education.

Score ranges are different for each grade and the standards for the next grade are more challenging than for the previous grade. As a result, students may need a higher overall score to remain in the same achievement level as the previous year. CAASPP enables users to look at the progress students made toward becoming college and career ready by comparing the current score to the score in the previous year.

Because the CAST assessment is only administered in grades five, eight, and once in high school, a cohort analysis for CAST is not provided.

# 2025 Smarter Balanced Assessment Results

## Riverside Countywide Student Cohort Progress: English Language Arts

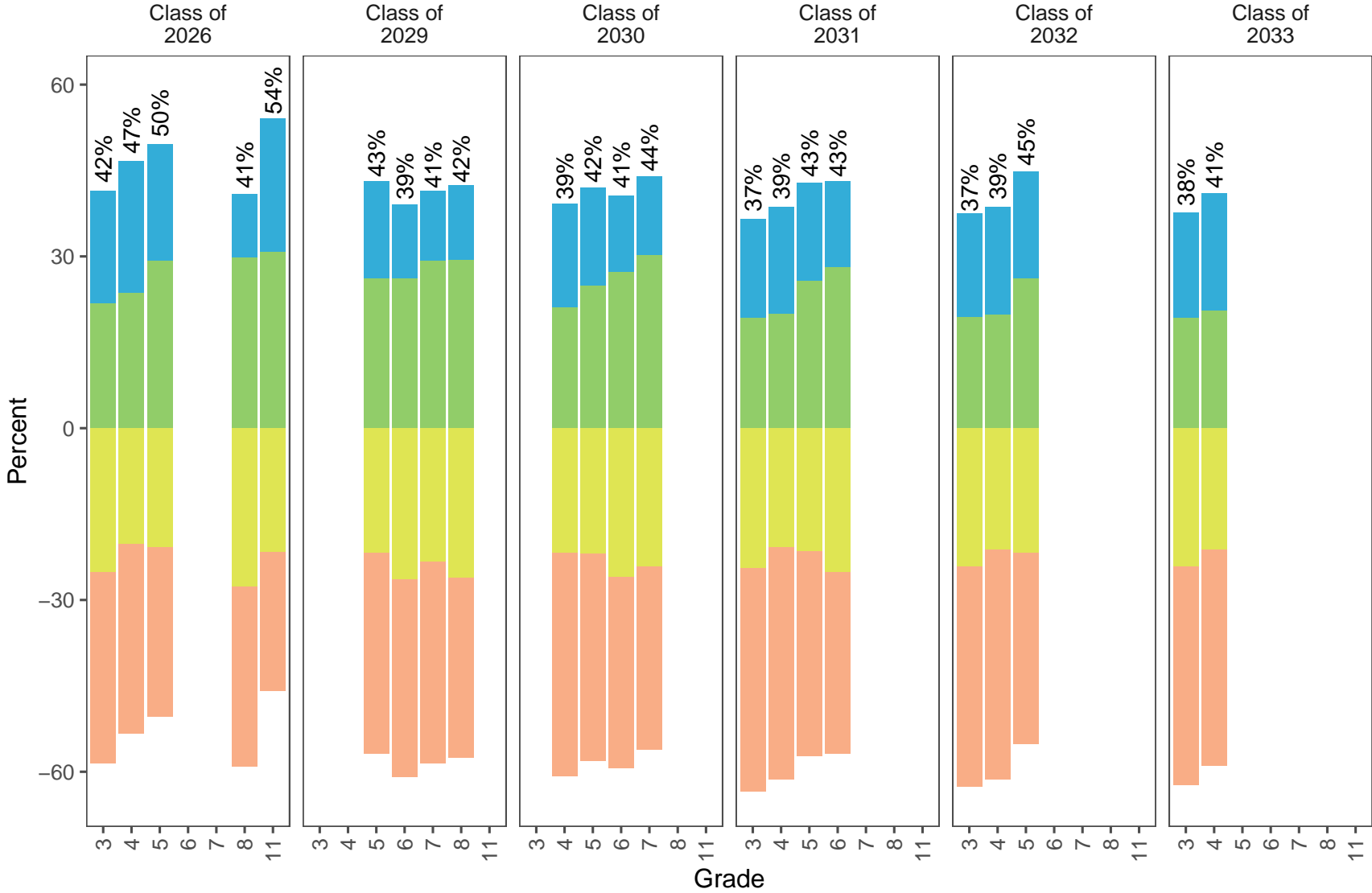


Table 17: Riverside Countywide English Language Arts by Cohort

cohort	Grade	n	% Exceeded	% Met	% Nearly Met	% Not Met
Class of 2026	3	31014	19.78	21.74	25.18	33.31
Class of 2026	4	31541	23.15	23.54	20.27	33.04
Class of 2026	5	31868	20.47	29.19	20.78	29.57
Class of 2026	8	31969	11.15	29.76	27.68	31.41
Class of 2026	11	31599	23.28	30.79	21.72	24.21
Class of 2029	5	31468	17.01	26.13	21.80	35.05
Class of 2029	6	31653	12.99	26.07	26.51	34.43
Class of 2029	7	31602	12.16	29.26	23.36	35.22
Class of 2029	8	31881	13.10	29.32	26.20	31.39
Class of 2030	4	30176	18.17	21.02	21.82	38.99
Class of 2030	5	30886	17.07	24.89	21.94	36.11
Class of 2030	6	30913	13.33	27.29	26.09	33.30
Class of 2030	7	30957	13.66	30.26	24.13	31.94
Class of 2031	3	30169	17.22	19.29	24.48	39.01
Class of 2031	4	30785	18.67	19.93	20.82	40.58
Class of 2031	5	31097	17.13	25.69	21.46	35.72
Class of 2031	6	31232	15.10	28.07	25.11	31.72
Class of 2032	3	30451	18.06	19.41	24.17	38.36
Class of 2032	4	30858	18.90	19.75	21.20	40.15
Class of 2032	5	31240	18.78	26.10	21.75	33.37
Class of 2033	3	30122	18.34	19.26	24.20	38.20
Class of 2033	4	30627	20.60	20.47	21.24	37.69

# 2025 Smarter Balanced Assessment Results

## Riverside Countywide Student Cohort Progress: Mathematics

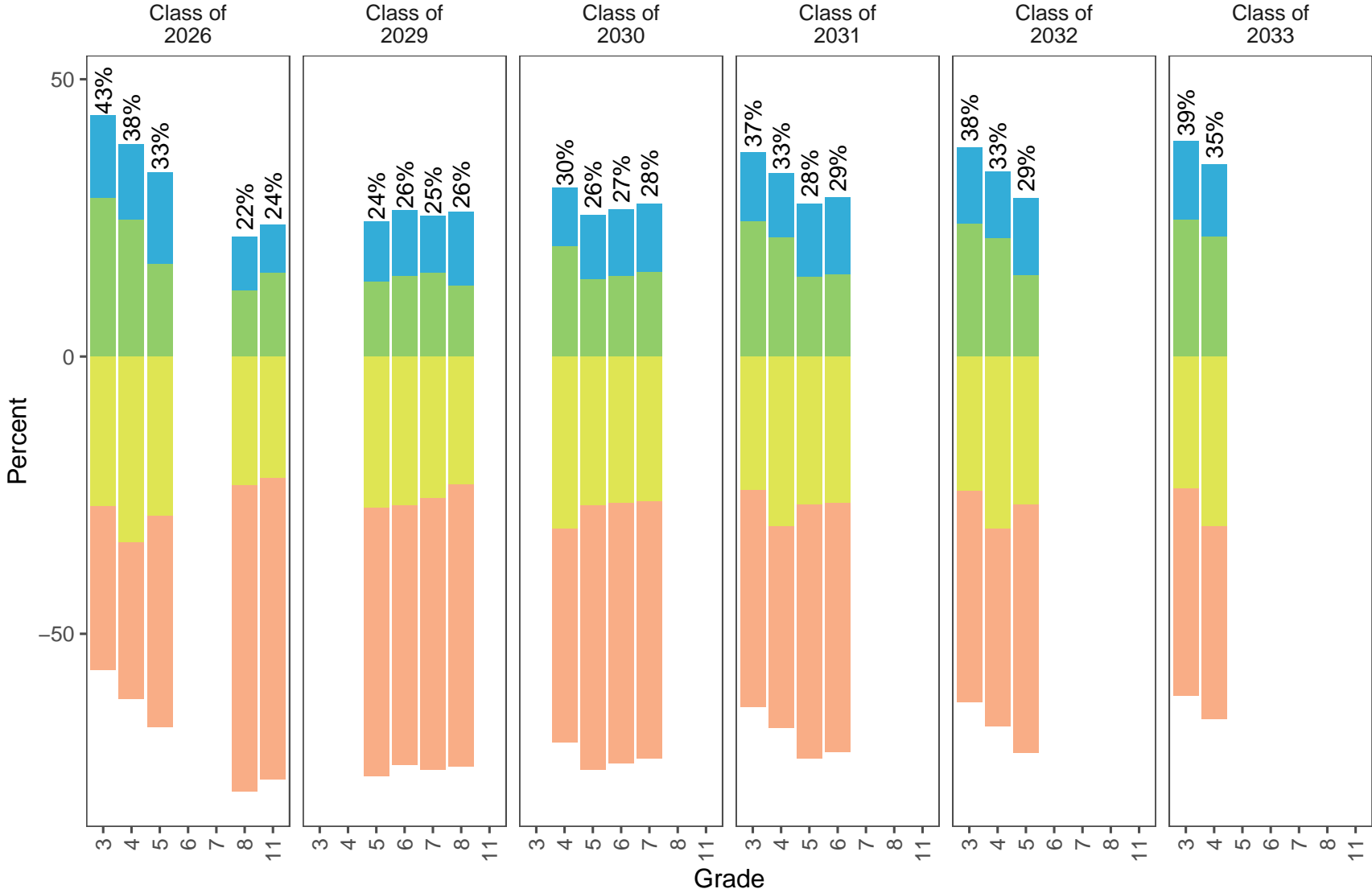


Table 18: Riverside Countywide Mathematics by Cohort

cohort	Grade	n	% Exceeded	% Met	% Nearly Met	% Not Met
Class of 2026	3	31100	14.98	28.51	26.93	29.58
Class of 2026	4	31635	13.71	24.59	33.47	28.23
Class of 2026	5	31991	16.52	16.65	28.79	38.03
Class of 2026	8	31970	9.60	11.92	23.25	55.23
Class of 2026	11	31559	8.74	15.00	21.90	54.36
Class of 2029	5	31519	11.00	13.40	27.24	48.36
Class of 2029	6	31702	11.87	14.53	26.81	46.79
Class of 2029	7	31731	10.40	15.05	25.56	48.99
Class of 2029	8	31923	13.22	12.81	23.10	50.88
Class of 2030	4	30217	10.46	19.89	31.10	38.55
Class of 2030	5	30965	11.72	13.83	26.85	47.61
Class of 2030	6	31052	12.06	14.52	26.46	46.96
Class of 2030	7	31014	12.42	15.14	26.07	46.37
Class of 2031	3	30218	12.55	24.33	24.06	39.06
Class of 2031	4	30850	11.49	21.50	30.64	36.37
Class of 2031	5	31262	13.28	14.34	26.67	45.70
Class of 2031	6	31297	13.90	14.83	26.32	44.96
Class of 2032	3	30537	13.83	23.89	24.27	38.02
Class of 2032	4	31034	12.05	21.29	31.05	35.62
Class of 2032	5	31351	14.05	14.56	26.68	44.71
Class of 2033	3	30330	14.31	24.58	23.76	37.35
Class of 2033	4	30745	13.04	21.65	30.63	34.68

**Section 5: List of Districts in Riverside County 2025 English Language Arts, Mathematics, and Science Results**

There is great variance in the size and demographics of the school districts within Riverside County. The largest district, Corona-Norco Unified School district served almost 50,000 students in the 2024-25 school year. The smallest district, Desert Center Unified, had an enrollment of 29 students in the 2024-25 school year (Source: [CDE Dataquest](#)).

Reviewing assessment results for schools and districts within Riverside County allows districts to determine how they perform in comparison to other districts on English language arts/literacy, mathematics, and science statewide assessments. This report also permits school and district leaders to determine how their district is faring in comparison to similar districts if demographics are taken into consideration.

### 2025 Smarter Balanced Assessment Results Riverside County English Language Arts by District

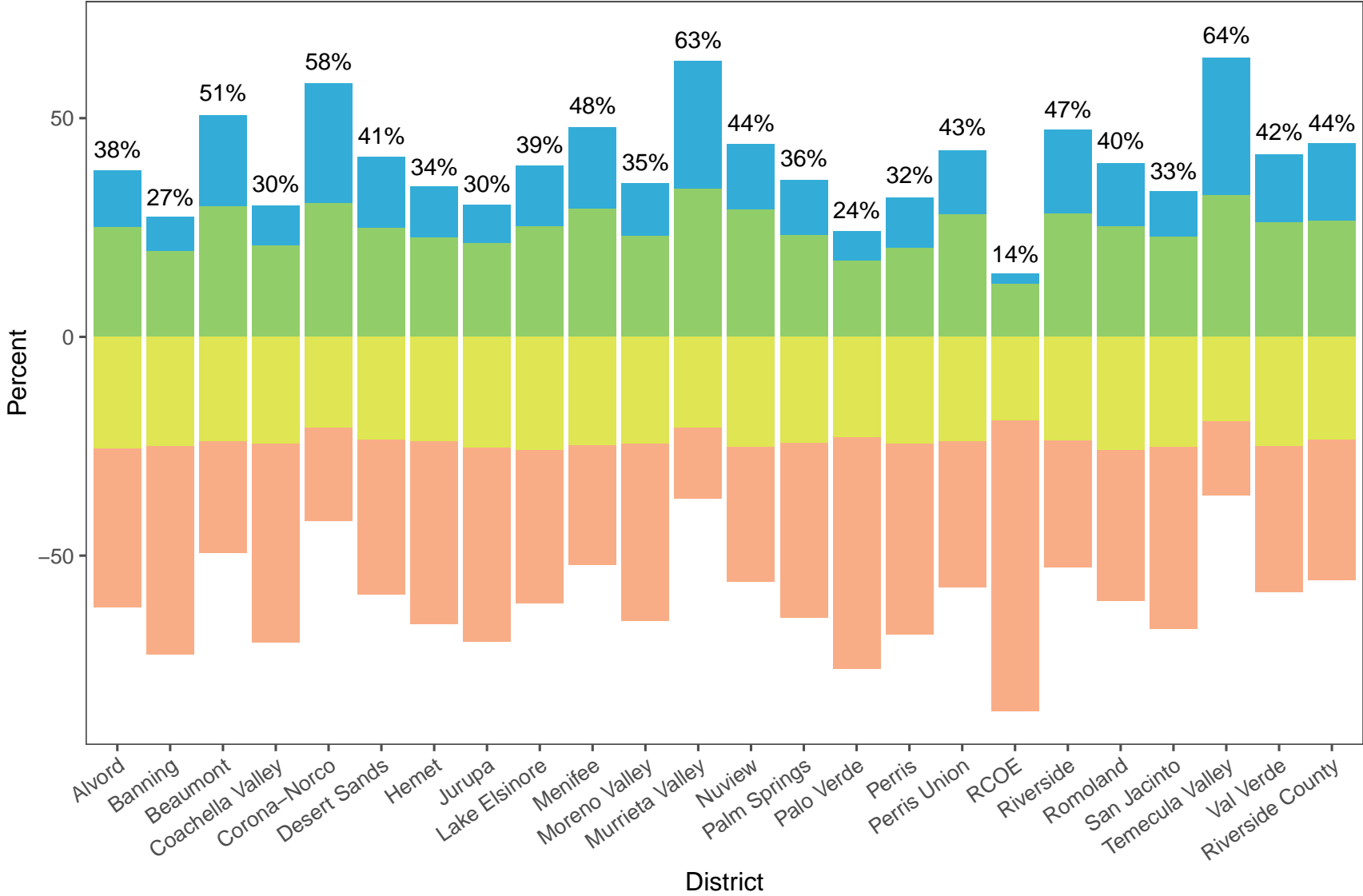


Table 19: Riverside County English Language Arts by District

District	n	% Exceeded	% Met	% Nearly Met	% Not Met
Alvord	8541	13.10	25.03	25.52	36.34
Banning	2224	7.87	19.56	24.91	47.66
Beaumont	6213	20.81	29.81	23.92	25.46
Coachella Valley	8432	9.11	20.97	24.47	45.46
Corona-Norco	25678	27.40	30.57	20.74	21.29
Desert Sands	13288	16.13	24.93	23.58	35.36
Hemet	11905	11.73	22.68	23.79	41.81
Jurupa	9276	8.76	21.50	25.43	44.31
Lake Elsinore	10561	13.75	25.34	25.86	35.05
Menifee	7924	18.60	29.35	24.70	27.35
Moreno Valley	16055	11.98	23.13	24.43	40.46
Murrieta Valley	11158	29.15	33.92	20.77	16.16
Nuview	1182	14.81	29.19	25.21	30.80
Palm Springs	10381	12.66	23.24	24.26	39.84
Palo Verde	1218	6.65	17.41	22.99	52.96
Perris	3162	11.64	20.30	24.48	43.58
Perris Union	3620	14.75	27.96	23.90	33.40
RCOE	428	2.34	12.15	19.16	66.36
Riverside	19732	19.19	28.14	23.75	28.92
Romoland	3055	14.44	25.27	25.92	34.37
San Jacinto	5419	10.50	22.83	25.13	41.54
Temecula Valley	13513	31.37	32.45	19.34	16.84
Val Verde	9720	15.45	26.22	24.99	33.33
Riverside County	217731	17.70	26.62	23.57	32.11

### 2025 Smarter Balanced Assessment Results

#### Riverside County Mathematics by District

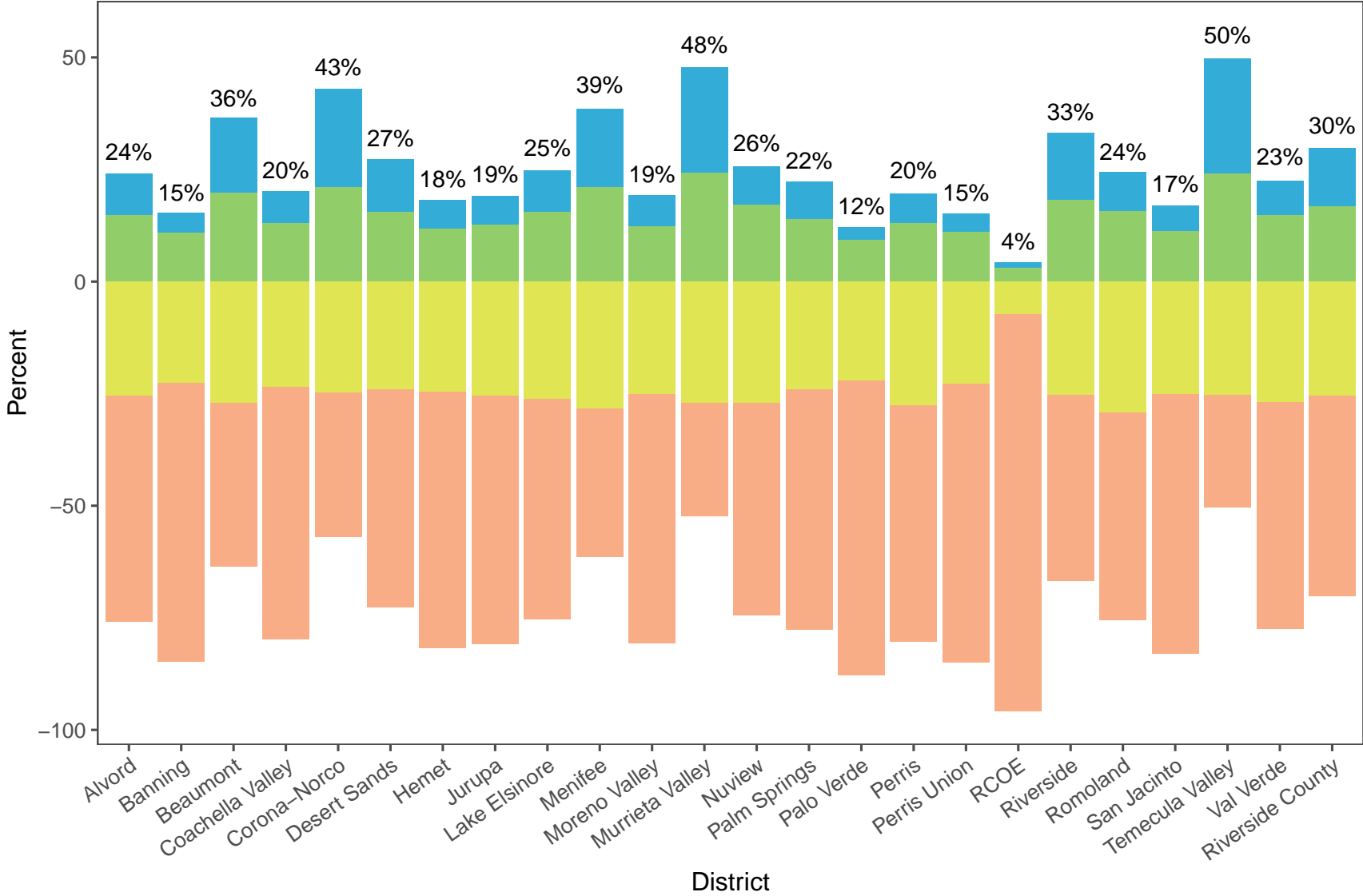


Table 20: Riverside County Mathematics by District

District	n	% Exceeded	% Met	% Nearly Met	% Not Met
Alvord	8583	9.27	14.90	25.52	50.31
Banning	2222	4.41	10.89	22.64	62.06
Beaumont	6200	16.66	19.82	26.98	36.53
Coachella Valley	8464	7.07	13.03	23.56	56.34
Corona-Norco	25788	22.02	20.98	24.82	32.18
Desert Sands	13332	11.74	15.60	24.13	48.53
Hemet	11913	6.39	11.82	24.66	57.13
Jurupa	9318	6.55	12.64	25.49	55.32
Lake Elsinore	10590	9.25	15.51	26.19	49.05
Menifee	7933	17.51	21.05	28.38	33.06
Moreno Valley	16078	6.87	12.38	25.16	55.59
Murrieta Valley	11116	23.36	24.33	27.15	25.16
Nuview	1183	8.45	17.16	27.05	47.34
Palm Springs	10404	8.41	13.91	24.09	53.59
Palo Verde	1209	2.81	9.35	22.08	65.76
Perris	3205	6.52	13.10	27.64	52.73
Perris Union	3631	4.13	10.99	22.75	62.13
RCOE	428	1.17	3.04	7.24	88.55
Riverside	19773	15.00	18.20	25.38	41.42
Romoland	3049	8.72	15.78	29.32	46.18
San Jacinto	5420	5.66	11.29	25.13	57.92
Temecula Valley	13544	25.71	24.01	25.26	25.02
Val Verde	9779	7.79	14.78	26.80	50.63
Riverside County	218194	12.96	16.82	25.49	44.73

### 2025 Smarter Balanced Assessment Results

#### Riverside County Science by District

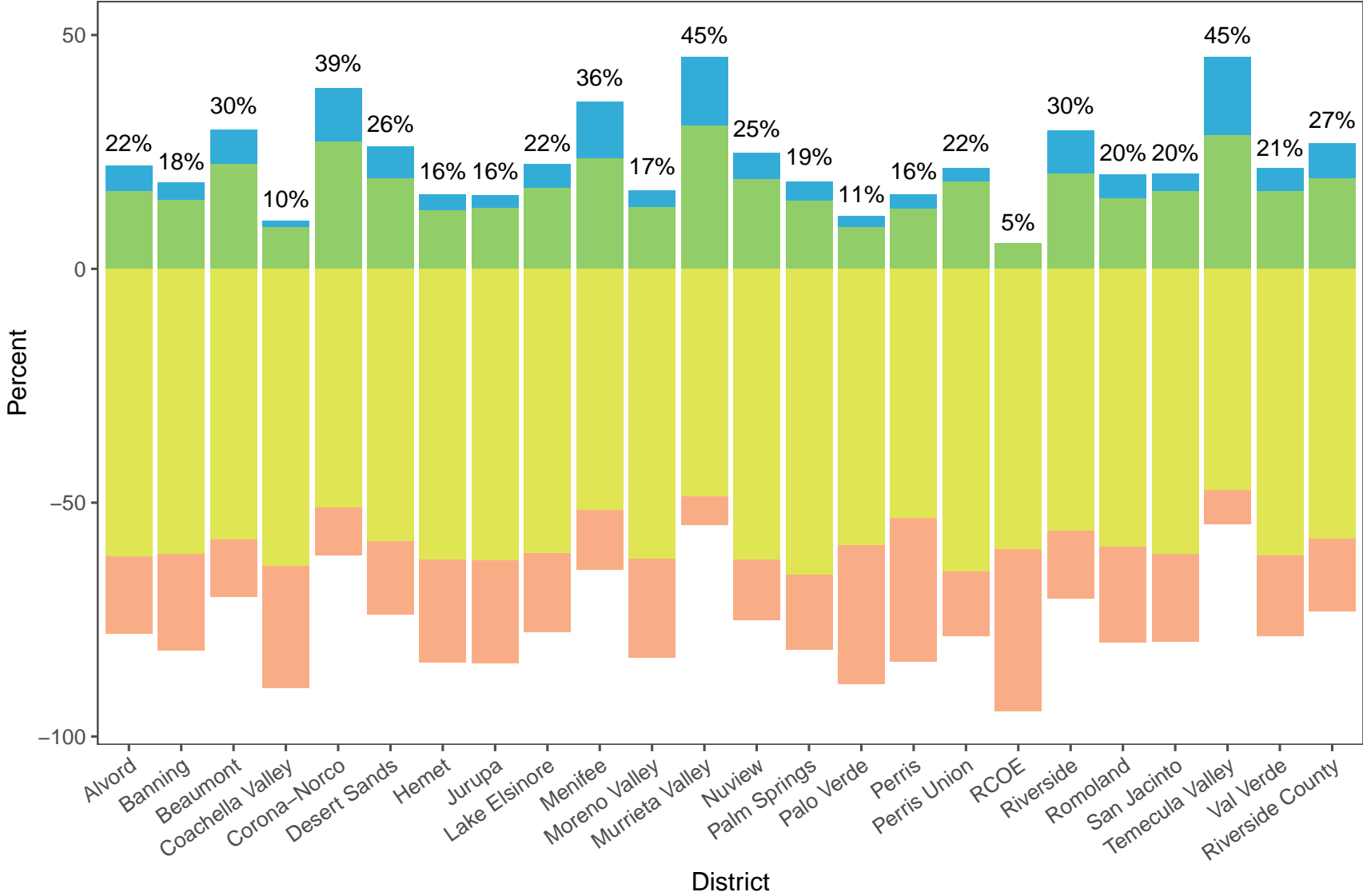


Table 21: Riverside County Science by District

District	n	% Exceeded	% Met	% Nearly Met	% Not Met
Alvord	3912	5.44	16.59	61.53	16.44
Banning	976	3.69	14.75	60.96	20.59
Beaumont	3598	7.50	22.35	57.95	12.20
Coachella Valley	4570	1.42	8.88	63.57	26.13
Corona-Norco	11611	11.61	27.14	51.02	10.23
Desert Sands	6025	6.72	19.40	58.29	15.59
Hemet	6520	3.25	12.58	62.25	21.92
Jurupa	4017	2.69	13.04	62.34	21.93
Lake Elsinore	4653	5.18	17.21	60.74	16.87
Menifee	2663	12.02	23.62	51.71	12.65
Moreno Valley	7115	3.63	13.18	62.09	21.10
Murrieta Valley	5066	14.65	30.62	48.70	6.04
Nuview	511	5.68	19.18	62.23	12.92
Palm Springs	5197	3.98	14.62	65.35	16.05
Palo Verde	549	2.37	8.93	59.02	29.69
Perris	874	3.20	12.81	53.32	30.66
Perris Union	2978	2.82	18.70	64.67	13.80
RCOE	147	0.00	5.44	59.86	34.69
Riverside	8739	9.22	20.41	56.00	14.36
Romoland	1037	5.11	15.04	59.50	20.35
San Jacinto	2379	3.66	16.65	61.03	18.66
Temecula Valley	6301	16.87	28.50	47.29	7.33
Val Verde	4347	4.83	16.66	61.33	17.18
Riverside County	99389	7.39	19.39	57.67	15.55

## **Section 6: Comparison to 10 Largest Counties 2025 English Language Arts, Mathematics, and Science Results**

Riverside County is one of the largest counties in the state of California. In an effort to determine how Riverside County is performing on statewide, standardized assessments as compared to other large counties in CA, this report includes Smarter Balanced English language arts (ELA)/literacy and mathematics assessment results for ten comparison counties in CA. Counties include Alameda, Fresno, Kern, Los Angeles, Orange, Sacramento, San Bernardino, San Diego, and Santa Clara.

### 2025 Smarter Balanced Assessment Results English Language Arts by County

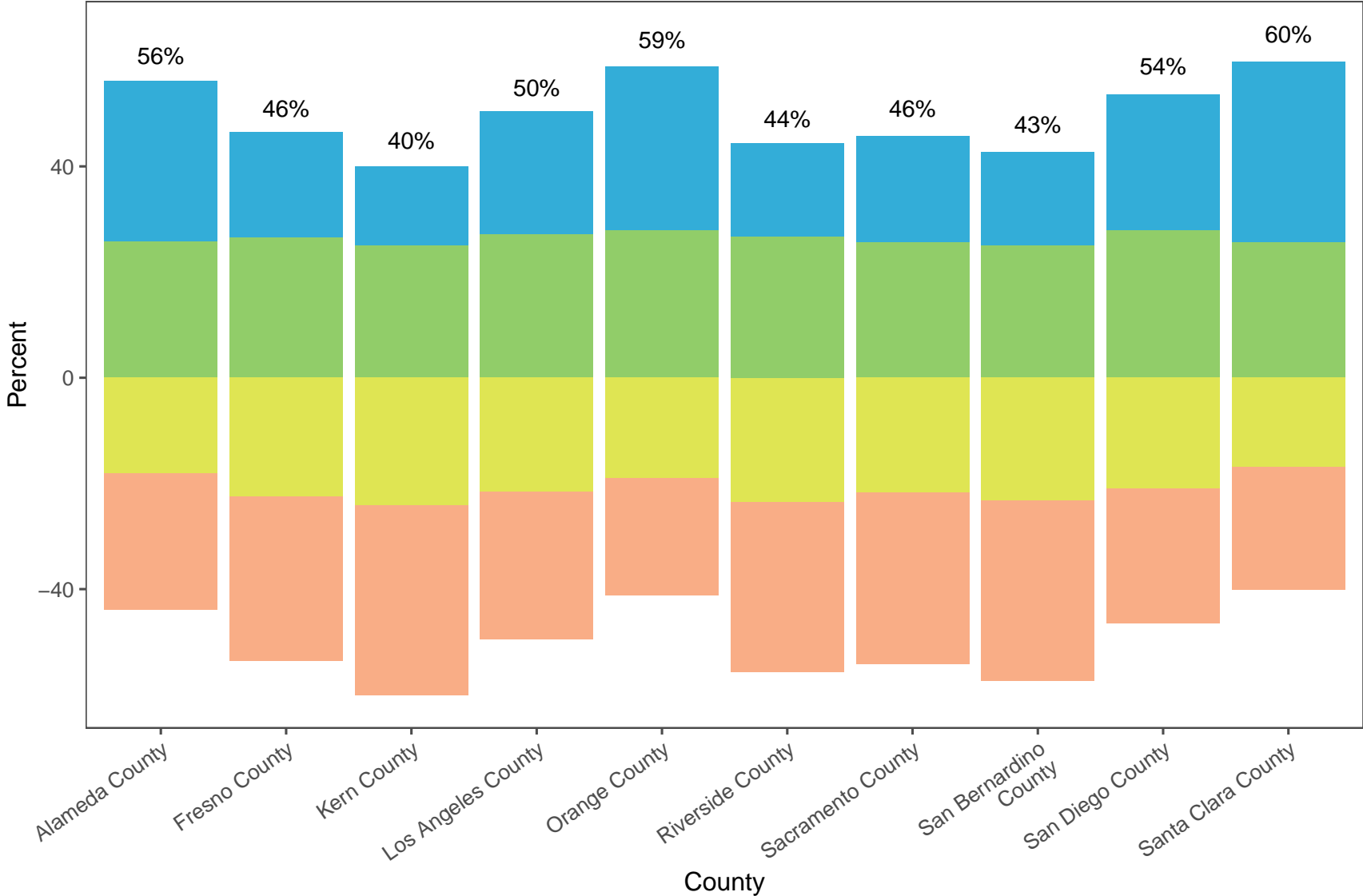


Table 22: English Language Arts by County

County	n	% Exceeded	% Met	% Nearly Met	% Not Met
Alameda County	105783	30.42	25.74	18.03	25.81
Fresno County	105392	19.89	26.55	22.42	31.14
Kern County	102104	14.88	25.06	24.06	36.00
Los Angeles County	644653	23.42	27.08	21.55	27.95
Orange County	216851	31.06	27.83	19.01	22.10
Riverside County	217731	17.70	26.62	23.57	32.11
Sacramento County	123944	20.11	25.67	21.74	32.49
San Bernardino County	203942	17.57	25.09	23.16	34.18
San Diego County	237200	25.68	27.90	20.98	25.45
Santa Clara County	116604	34.22	25.60	16.96	23.22

### 2025 Smarter Balanced Assessment Results Mathematics by County

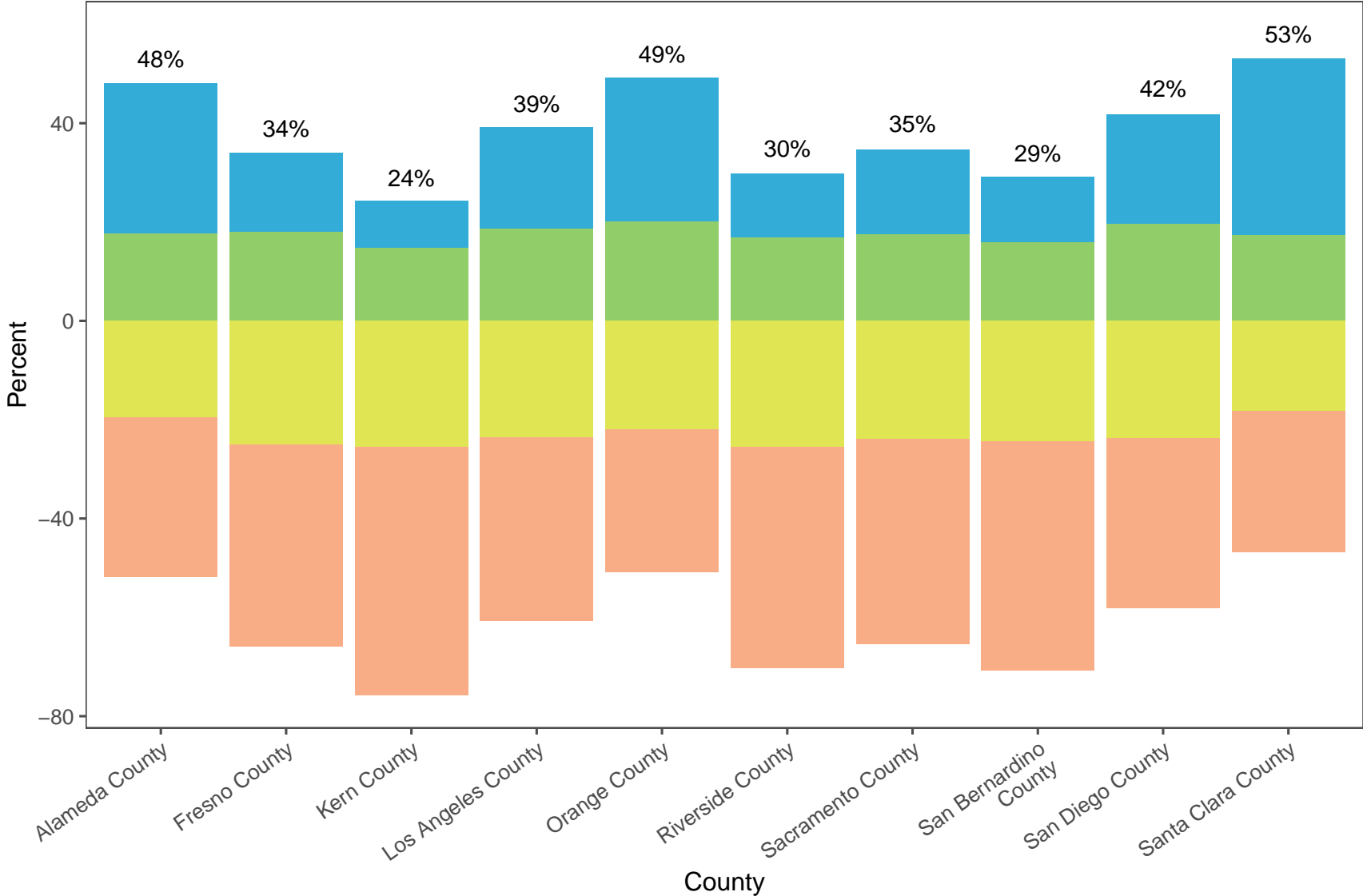


Table 23: Mathematics by County

County	n	% Exceeded	% Met	% Nearly Met	% Not Met
Alameda County	106376	30.39	17.76	19.53	32.32
Fresno County	105661	16.00	18.09	25.10	40.80
Kern County	102415	9.44	14.81	25.45	50.29
Los Angeles County	648566	20.65	18.60	23.60	37.15
Orange County	218210	29.05	20.16	21.87	28.92
Riverside County	218194	12.96	16.82	25.49	44.73
Sacramento County	125478	17.11	17.55	23.82	41.52
San Bernardino County	204556	13.35	15.84	24.48	46.32
San Diego County	238545	22.29	19.57	23.79	34.35
Santa Clara County	117896	35.82	17.33	18.24	28.61

### 2025 Smarter Balanced Assessment Results Science by County

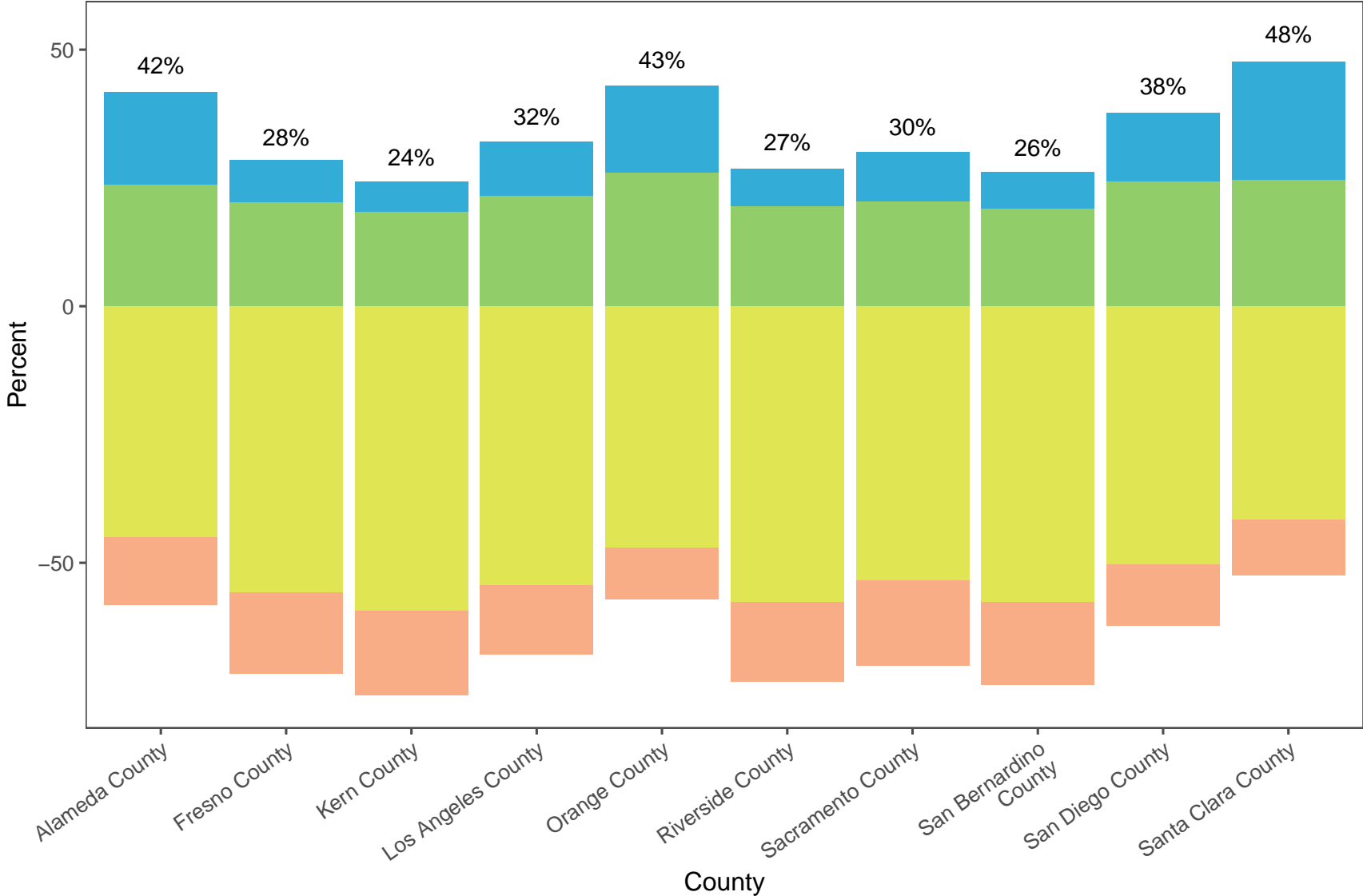


Table 24: Science by County

County	n	% Exceeded	% Met	% Nearly Met	% Not Met
Alameda County	46286	18.17	23.57	45.03	13.24
Fresno County	45924	8.26	20.21	55.75	15.78
Kern County	43910	5.83	18.38	59.43	16.36
Los Angeles County	287186	10.61	21.49	54.36	13.54
Orange County	98683	17.06	25.90	46.98	10.06
Riverside County	99389	7.39	19.39	57.67	15.55
Sacramento County	54908	9.68	20.33	53.41	16.58
San Bernardino County	88539	7.27	18.90	57.74	16.09
San Diego County	105176	13.52	24.22	50.40	11.86
Santa Clara County	52574	22.96	24.64	41.57	10.82